

Airborne Geophysics Survey Environment Plan

Summary Document

HSE-SUM-038 | Revision 3 | 08/04/2020



HSE

Contents

1	Introduction	1
1.1	Contact Details	1
2	Overview of Activity	1
3	Environmental Impacts and Management Measures.....	3
3.1	Implementation Strategy	5
3.1.1	Communication and Consultation	5

Figures

Figure 1	Location of the Activity area.	2
----------	-------------------------------------	---

Table

Table 1	Details of the Activity.	1
Table 2	Summary of the existing environment, potential impacts and management approach with the Activity.	4

1 Introduction

Buru Energy Limited (Company) is an Australian ASX listed company engaged in oil and gas exploration in the Kimberley region of Western Australia, in an area known in geological terms as the Canning Basin.

The Company has developed the *Airborne Geophysics Survey Environment Plan* (HSE-PLN-040) (Environment Plan) for the management of the environmental aspects of the Company's planned airborne geophysics survey in petroleum exploration permits EP 371 and STP-SPA-0065 (the Activity).

This Summary Document summarises the operations and mitigation and management measures in the approved Environment Plan.

1.1 Contact Details

Chief Operating Officer

Buru Energy Limited

Phone: +61 8 9215 1800

Fax: +61 8 9215 1899

Email: info@buruenergy.com

2 Overview of Activity

The Activity will be undertaken in EP 371 and STP-SPA-0065 located between 5 km and 110 km SW of Fitzroy Crossing (Table 1, Figure 1).

Table 1 Details of the Activity.

General	
Total length of lines	3,499 km
Exploration Permits	EP 391, STP-SPA-0065
Distance from Fitzroy Crossing	Approx. 5 km west
Survey base	Fitzroy Crossing

The Activity will likely be undertaken in the 2020 or 2021 dry season (between April and November) and take approximately one week to complete. The Activity will be undertaken in daylight hours only, in accordance with Civil Aviation Safety Authority (CASA) requirements.

The Activity will be undertaken using a single engine light aircraft, flying along a series of north-south and east-west orientated survey lines at a minimum height of 150 m above ground level. The north-south survey lines will be approximately 1 km apart, the east-west lines approximately 10 km apart. During the flight the aircraft will passively record data.

For the duration of the Activity, personnel and aircraft will be based at Fitzroy Crossing. The aircraft will operate out of the Fitzroy Crossing airport, where refuelling will occur.

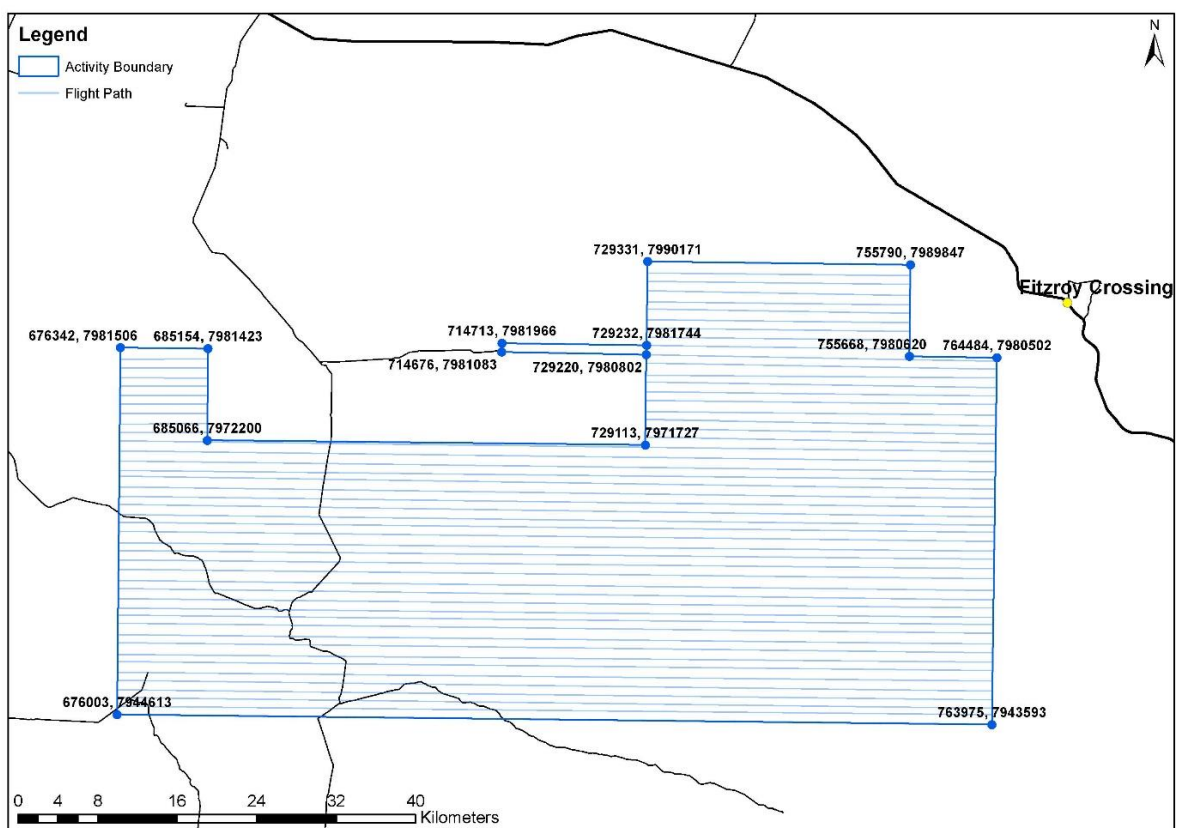
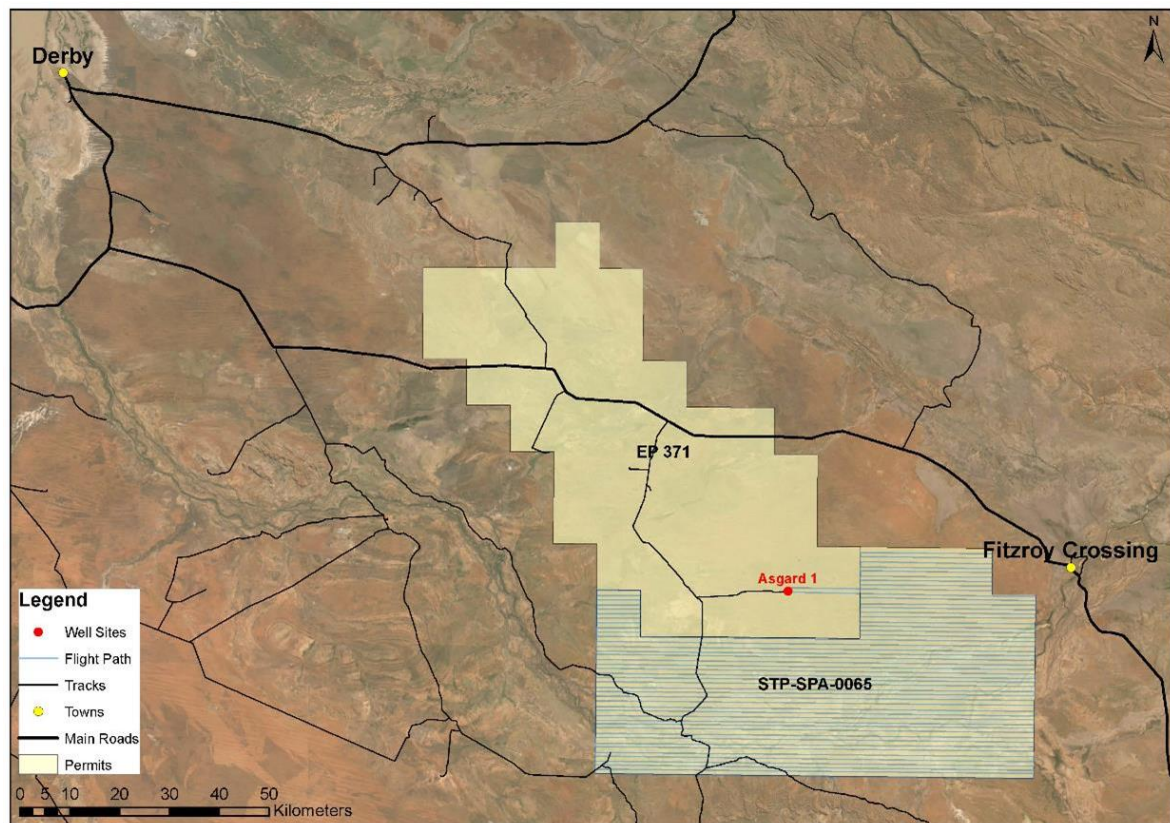


Figure 1 Location of the Activity area (GDA 94, Zone 51).

3 Environmental Impacts and Management Measures

A summary of the existing environmental characteristics of the Activity area, potential impacts that could result from the Activity and the risk of these potential impacts occurring is provided in Table 2. Included in this table are also the management and mitigation measures that form part of the implementation strategy to minimise environmental risk.

Table 2 Summary of the existing environment, potential impacts and management approach with the Activity.

Environmental Characteristic	Description	Potential Impact	Key Management Measures	Risk	Implementation Strategy
Vegetation and Flora	<p>Vegetation within the Activity area and the greater Canning Basin is relatively uniform and comprised of a number of common vegetation associations. The area where the survey will occur is located within the Dampierland Bioregion with a small portion (~5%) located within the Ord Victoria Plain Bioregion.</p> <p>One threatened flora species, <i>Keraudrenia exastia</i>, is most likely to occur within the Activity area. Nine Priority 1 species, 3 Priority 2 species and 16 Priority 3 species are likely to occur in the Activity area.</p>	Loss of native flora species.	<ul style="list-style-type: none"> The Activity does not involve ground disturbance. All on ground operations will occur at Fitzroy Crossing airport. 	The Activity involves no ground disturbance operations and will therefore not impact vegetation and flora.	<ul style="list-style-type: none"> Contractor supervisor to ensure the geophysical survey is undertaken from a height of at least 150 m above ground level.
Fauna	<p>The fauna assemblages of the Dampierland and Ord Victoria Plain bioregions are unique as they represent a blending of Western Australia's desert and tropical coastal zones. The Activity area overlaps part of the West Kimberley National Heritage Area which follows the Fitzroy River and a small Schedule 1 area. The Fitzroy River supports a number of migratory and conservation significant bird species which typically utilise this area during the wet season (December to March annually).</p> <p>10 mammals, 32 birds, five reptiles and one fish species of conservation significance may occur in the Activity area. Only one species (greater bilby) is considered likely to occur.</p>	<p>Loss of a local population of a conservation significant fauna species.</p> <p>Disturbance of fauna.</p>	<ul style="list-style-type: none"> The Activity will be undertaken during the dry season when bird activity is minimal. The Activity will be undertaken at an elevation of at least 150 m above ground level. Take-off and landing procedures will be in place. The Activity will be undertaken during daylight hours only. Approximately 1,750 km of lines will be flown over the West Kimberley National Heritage Area, which will take only approximately 11 hours flight time. The Activity area does not overlap Environmentally Sensitive Areas. The Activity does not involve ground disturbance. 	Given Company and Contractor experience, and the mitigation measures that have been implemented by the Company, it is unlikely that birds will be impacted by the Activity.	<ul style="list-style-type: none"> Aircraft will be inspected and maintained in accordance with CASA requirements. Contractor supervisor to ensure the airborne survey is undertaken from a height of at least 150 m. Contractor supervisor to ensure all operations are undertaken in accordance with CASA requirements. Contractor supervisor to ensure runway clearances include checking the presence of birds.
Community	<p>The Activity area is located within the Shire of Derby-West Kimberley in a sparsely populated region with limited settlement, transport or communications infrastructure. The Activity area overlaps six pastoral stations.</p> <p>The Activity area overlays three native title determination areas: Nyikina Mangala, Yungngora (Noonkanbah) and Yi-Martuwarra Ngurrara.</p>	Disturbance of local landholders.	<ul style="list-style-type: none"> The Company has been in contact with all relevant stakeholders and in particular pastoralists to ensure the Activity will not conflict with mustering. The Company has also consulted with other stakeholders who might be undertaking airborne based activities (i.e. FESA and DBCA undertaking aerial burning). On-going consultation with local landholders and other stakeholders regarding the Activities including regular notice/updates until completion. The Activity does not involve ground disturbance. 	Given ongoing consultation with local landholders, the management measures and short duration of the Activity, impacts to the community are unlikely.	<ul style="list-style-type: none"> Contractor supervisor to ensure no flying outside of designated flight path and Activity area. Kimberley Corporate Affairs Manager to maintain communication with pastoral station managers prior to and during the survey.

3.1 Implementation Strategy

The Implementation Strategy has been developed to manage the Activity to ensure that the environmental values of the Activity area are protected. The Implementation Strategy ensures that all environmental impacts/risks identified by the risk assessment are continually reduced to ALARP and performance objectives, standards and criteria are met for the duration of the Activity.

The Implementation Strategy includes the following systems, practices and procedures:

- environmental values;
- environmental performance objectives, standards and measurement criteria;
- delineation of roles and responsibilities;
- training and induction programs;
- compliance and continuous improvement, including:
 - monitoring;
 - auditing; and
 - reporting and record keeping.
- emergency response; and
- communication and consultation.

3.1.1 Communication and Consultation

The Company has engaged in communication and consultation with relevant stakeholders as summarised in the Environment Plan, either specifically for the Activity or via regular updates on the Company's operations in general. As the Activity is located within a sparsely populated region with limited settlement, transport or communications infrastructure, relevant stakeholders are limited to government departments, traditional owners and pastoralists. The stakeholders consulted include:

- Noonkanbah Pastoral Station;
- Millijidee Pastoral Station;
- Gogo Pastoral Station;
- Jubilee Downs/Quanbun Downs Pastoral Station
- Kalyeeda Pastoral Station;
- Liveringa Pastoral Station;
- Yungngora Traditional Owners;
- Nyikina Mangala Traditional Owners;
- Yi-Martywarra Ngurrara Traditional Owners;
- Shire of Derby/West Kimberley;
- DBCA (formerly DPaW);
- DFES Broome;
- DAWE;
- Department of Fire and Emergency Services; and
- Broome and Derby Police.

These stakeholders have been consulted via phone, written notices and face-to-face meetings. To date any issues that have been raised in relation to the Activity through the consultation process have been able to be addressed and resolved. The Company will ensure that it complies with the terms of the heritage surveys provided by Traditional Owners. The Company will continue to communicate with stakeholders and consult during all phases of the Activities, on a formal and informal basis, and by email, letter, face-to-face and telephone.