

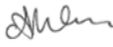


WIL.2373-PL-HSE-0002

WILUNA GAS PIPELINE

**OPERATIONS ENVIRONMENT MANAGEMENT
PLAN SUMMARY**

Rev	Date	Status	Originated/ Custodian	Checked	Approved
3.2	30/03/26	DMPE comments incorporated			
			L. Graham	C. O'Reilly	A. Rawlinson
			Environment Business Partner	Environment Officer	Environment Head

Revision	Date	Status
3.1	12 Mar 2024	5 yearly review; AGE, KGP and LWP removed
3	5 Oct 2020	Revised to incorporate Karlawinda and Lake Way Gas Pipelines; 2.5 yearly OSCP renewal; Incorporate learnings from APA-REG-4583_WA OEP Learnings Register
2	6 Mar 2019	Updated to incorporate Agnew Gas Pipeline
1	11 May 2018	Updated in line with OEP five yearly review
0	28 Jan 2014	Initial version issued for use

© Copyright APA Group 2026

Table of Contents

1.	INTRODUCTION.....	5
1.1	Purpose and Scope.....	5
1.2	Health, Safety, Environment and Heritage Policy.....	5
1.3	Abbreviations.....	5
2.	LOCATION.....	7
3.	ACTIVITY DESCRIPTION.....	9
3.1	General Equipment & Facility Maintenance.....	9
3.2	Pipeline Excavation.....	9
3.3	Venting.....	9
3.4	Flaring.....	10
3.5	Pigging.....	10
3.6	Easement Inspections.....	10
3.7	Hot Tapping.....	11
3.8	Vegetation Clearing.....	11
3.9	Waste Management.....	11
3.10	Vehicle Access.....	11
3.11	Planning for closure.....	11
4.	RECEIVING ENVIRONMENT.....	12
4.1	Climate.....	12
4.2	Physical Environment.....	12
4.2.1	Topography, Geology and Soils.....	12
4.2.2	Hydrology.....	13
4.2.3	Acid Sulfate Soils.....	13
4.2.4	Contaminated Sites.....	13
4.3	Biological Environment.....	13
4.3.1	Fauna.....	13
4.3.2	Flora.....	14
4.3.3	Weeds.....	14
4.3.4	Disease.....	15
4.4	Social Environment.....	15
4.4.1	Heritage and Native Title.....	15
4.4.2	Socio-Economic.....	15
5.	IMPLEMENTATION STRATEGY.....	16
6.	STAKEHOLDER CONSULTATION.....	19
6.1	Third Party Awareness Program.....	19
6.2	Landholder Contact Program.....	19
6.3	Routine Maintenance Works.....	19
6.4	Third Party Works.....	20
6.5	Emergency Services.....	20
6.6	Emergency Works.....	20
6.7	Five yearly EMP Renewal Consultation.....	21
7.	APA CONTACT DETAILS.....	27

8. REFERENCES..... 28

1. Introduction

This Operations Environment Management Plan (OEMP) Summary provides an overview of the environmental management requirements for the operation of the Wiluna Gas Lateral (WIL).

The nominated operator for the pipelines listed in is APT Pipelines (WA) Pty Limited.

1.1 Purpose and Scope

The purpose of this OEMP Summary is to provide information to the public regarding environmental management requirements.

The scope of this OEMP Summary is limited to operational works associated with the WIL.

1.2 Health, Safety, Environment and Heritage Policy

At APA we strive to be world class in health, safety, environment and heritage performance. Our foremost priorities include protection of the environment, heritage and the communities we operate.

APA is committed to managing and minimising our impact on the environment and heritage. We foster a culture of responsibility, leadership and awareness of our environment and heritage obligations and practices.

1.3 Abbreviations

Table 1 Abbreviations

Acronym	Definition
APA	APA Group
ASS	Acid Sulfate Soils
CS	Compressor Station
DBCA	Department of Biodiversity, Conservation and Attraction
DCCEEW	Department of Climate Change, Energy, the Environment and Water
DMPE	Department of Mines, Petroleum and Exploration
DPIRD	Department of Primary Industries and Regional Development
DPLH	Department of Planning, Lands and Heritage
DWER	Department of Water and Environmental Regulation
EMP	Environment Management Plan
ERP	Emergency Response Plan
GGP	Goldfields Gas Pipeline
IBRA	Interim Biogeographic Regionalisation for Australia
LCP	Landholder Contact Program
LMS	Learning Management System
LOS	Line of Sight
MB	Maintenance Base
NORM	Naturally occurring radioactive material
OEMP	Operations Environment Management Plan
OSCP	Oil Spill Contingency Plan
PDWSA	Public drinking water source area

Acronym	Definition
PL	Pipeline Licence
PTW	Permit to Work
ROW	Right of Way
TDS	Total Dissolved Salts
TPA	Third-Party Awareness Program
WBH	Water Bath Heaters
WIL	Wiluna Gas Lateral
WO	Work Order

2. Location

Construction of the 8.6 km WIL was completed in 1997. The pipeline commences at the offtake facility on the Goldfields Gas Pipeline (GGP) at KP 864.4, approximately 8.5 km northeast of Wiluna. The WIL then extends from GGP offtake in a southwesterly direction, terminating at the Wiluna Gold Delivery Station, located within the Wiluna Gold Mine. The WIL (Figure 1) is located within a dedicated easement and partially traverses the Millbillillie pastoral leases.

Approximate geographic information system latitude and longitude coordinates for the WIL operational areas are as follows:

- WIL commencement point: -26.573619, 120.309686.
- WIL termination point: -26.627711, 120.253335.

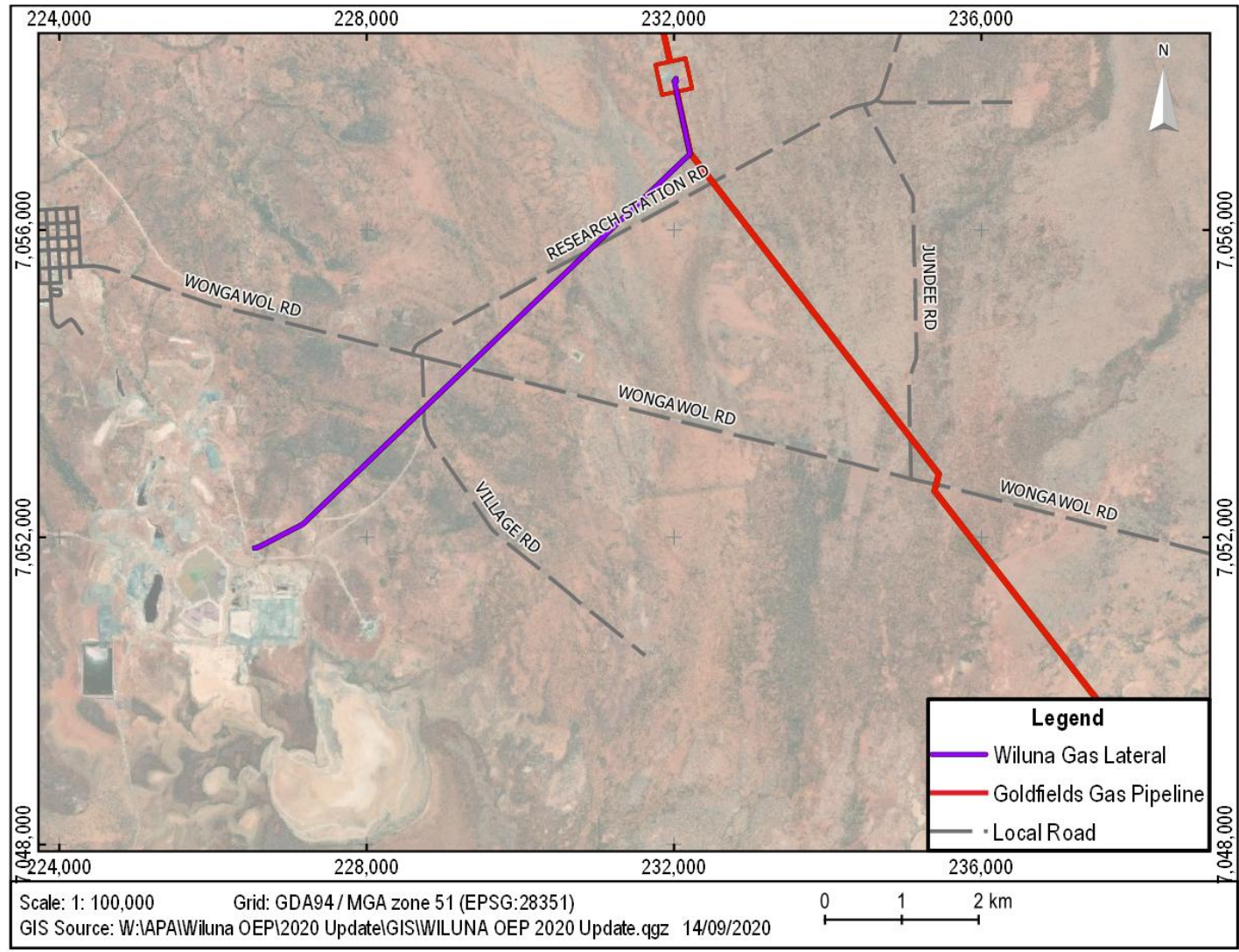


Figure 1 WIL Locality Map

3. Activity Description

3.1 General Equipment & Facility Maintenance

General equipment, easement and facility maintenance typically includes but is not limited to the following:

- Servicing and overhauls of machinery and equipment;
- Equipment inspections and testing;
- Monitoring;
- Erosion management and remediation (inclusive of import of fill);
- Modification of fencing, include minor concreting for footings;
- Maintenance of temporary site offices, ablutions, laydown, and parking areas;
- Filter inspections and replacement; and
- Small scale facility works.

The above activities involve various mechanical and electrical tasks which are undertaken by appropriately qualified technicians.

Filter inspections are undertaken at regular intervals and filters replaced as required. Filter replacement involves filter removal, wash down with water and transfer to a secure container for transfer to appropriate offsite disposal facilities.

Pipeline warning signs are in accordance with AS2885. Signs are placed so as to be inter-visible and may require replacement.

Erosion and subsidence management requiring the import of fill, ground/surface compaction and the mobilization of earth-moving machinery, may be required intermittently to ensure ongoing pipeline integrity. Fill will be clean of weeds and disease and sourced locally, where possible.

Small scale upgrades are required intermittently to allow for increased services or changes in pipeline requirements. Works may include minor concreting for footings, maintenance of temporary site offices, ablutions, laydown and parking areas to facilitate the small-scale installations. Works will be restricted to the pipeline licence area.

3.2 Pipeline Excavation

Pipeline excavations are undertaken periodically typically for pipeline repairs. The scales of excavations are generally single defect dig-ups.

Pipeline excavations are managed through Gas Transmission Excavation and Trenching Procedure.

Dewatering is sometimes required where the water table is present at less than a few metres from the ground surface, however this is rare (once every 5-10 years).

Abrasive blasting and coating activities may be conducted on an ad-hoc basis (likely once every ten years, based on similar APA pipelines).

3.3 Venting

Venting of gas is undertaken to purge pipelines or facilities for maintenance or emergency response purposes.

The Integrated Operations Centre Controller assists to monitor and respond to any unplanned/uncontrolled venting or gas release incidents via information provided on the on the operator interface (SCADA).

3.4 Flaring

Flaring using portable flare stacks may be employed as an environmental control measure during planned venting activities, where deemed appropriate. The decision to flare considers a balance of environmental benefit (ALARP), safety, fire risk, and potential community impacts, such as noise and radiation.

Flaring is subject to engineering planning and applicable supporting assessments, including noise exposure evaluations, to ensure risks are managed in accordance with relevant safety standards.

3.5 Pigging

Pipeline pigging is undertaken for the purposes of cleaning or integrity assessment (intelligent pigging). Intelligent pigging is completed in accordance with the requirements of AS2885.3 Section 6 – Pipeline Structural Integrity. In Line Inspection frequency is based on latest pigging data and integrity assessment, but not exceeding 10 years.

Pigs are run between pipeline scraper stations containing pig launching and receiving facilities. Particulate matter separated from the gas stream is a common by-product of pigging (removal of which is the ultimate goal in the case of a cleaning pig run), these are caught in the pig receiver trap along with the recovered pig and contained for appropriate offsite disposal.

3.6 Easement Inspections

Pipeline easement inspections are conducted as aerial or vehicle patrols. Scope of these patrols aim to identify:

- Third Party encroachments;
- Vegetation growth;
- Indicators of gas leaks;
- Line of sight;
- Presence of weed infestation greater than land immediately adjoining the corridor;
- Erosion;
- Exposed pipe; and
- Condition of signage and aerial markers.

Vehicle patrols are completed by pipeline technicians on a six-monthly basis or as per the Maximo Maintenance Regime. This work is conducted from light vehicles and managed through MAXIMO with WOs being generated for completion. Any issues identified are documented and where necessary additional WO raised for corrective action to be completed.

Aerial patrols are completed monthly. The monthly aerial patrol is undertaken via a contractor and any issues / occurrences that are recorded during the flight are uploaded into Field Maps directly by the contractor for APA to action. The contractors follow the Corridor Surveillance Procedure.

Any changes to the above frequencies will go through a Management of Change process via Maximo prior to the change being in effect.

3.7 Hot Tapping

Hot Tapping is the process of safely drilling a hole into an operating gas pipeline to allow a connection to be made. Excavations are within the previously disturbed boundaries.

3.8 Vegetation Clearing

The PPA requires upstream and downstream pipeline warning markers to be visible (line of sight). In some areas, plant regrowth obscures line of sight between pipeline warning markers and inhibits vehicle access for maintenance purposes and emergency response. In these instances, vegetation mulching becomes necessary. The operation does not comprise soil disturbance and hence vegetative root stock and soil quality is maintained.

Vegetation disturbance may also be required to facilitate minor excavations/dig-ups.

Clearing will occur in accordance with the Environmental Protection (Clearing of Native Vegetation) Regulation 2004.

3.9 Waste Management

General waste, contaminated waste, controlled waste and potentially NORMS waste are produced during the activity.

3.10 Vehicle Access

Vehicle activity predominantly comprises of light vehicles and occasional heavy vehicles for excavations, LOS clearing and associated maintenance activities. All access is restricted to the ROW and existing roads and tracks.

3.11 Planning for closure

APA will develop a separate environment plan for the decommissioning and rehabilitation of the WIL which will be submitted to DMPE for review and approval prior to any work commencing for this activity.

Rehabilitation of the pipeline easement will be back to safe, stable and no polluting form consistent with existing land use.

4. Receiving Environment

4.1 Climate

The WIL is located within the Murchison Province, which has been divided into different soil-landscape zones including the Salinaland Plains Zone. This Zone which covers most of the Shire of Wiluna and includes the WIL. Climate of Wiluna is considered a desert climate of hot summers and mild winters. Mean temperatures range between 5°C and 38°C. Average annual rainfall is 260mm and although rainfall is relatively evenly spread throughout the year, rainfall is experienced mostly during the summer months (BOM, 2023).

Regional wind patterns are generally mild and mostly east to south easterly, varying from 20 to 30km/h during the day. Morning wind patterns are usually north-easterly (up to 40km/hr), easterly and south-easterly throughout the year while afternoon wind patterns are mostly light and more varied, with the dominant wind direction east to south-easterly (BOM, 2023). Wind roses for Wiluna indicate that the wind is stronger and more variable in the summer months than in the winter months. The wind can affect the temperature and humidity of the area, as well as the dust and sandstorms that sometimes occur in the desert.

Refer to Table 2 for mean monthly rainfall data and Table 3 for the mean monthly maximum and minimum temperatures (BOM 2023).

Table 2: Mean Monthly Rainfall Data

J	F	M	A	M	J	J	A	S	O	N	D	Annual
37.2	38.7	37.0	28.6	25.1	23.6	14.7	9.9	5.0	7.3	12.1	22.1	261.0

(Wiluna; Site 013012; mm)

Table 3: Mean Monthly Maximum and Minimum Temperature

	J	F	M	A	M	J	J	A	S	O	N	D
Max	37.9	36.6	34.0	29.3	23.8	19.9	19.5	21.9	26.3	30.4	34.0	36.8
Min	22.9	22.2	19.6	15.1	10.0	6.7	5.4	6.8	10.0	13.9	17.9	21.1

(Wiluna; Site 013012; °C)

4.2 Physical Environment

4.2.1 Topography, Geology and Soils

The topography of the Murchison Region largely consists of gently undulating aeolian sandplains with areas of lateritic caprock and calcrete hardpan. Lateritic sand overlies salt flats, broad valleys and interfluves. Granite outcrops form sheets and tors. Outcrops or ridges of hills occur in the landscape where resistant, metamorphic belts are present (Dames and Moore 1994).

The WIL is located within gently undulating sandplain areas typical of the Salinaland Plains Zone of the Murchison Province as defined by Tille (2006).

The Murchison Province stretches across the northern third of the Yilgarn Craton. The Underlying rock predominantly consists of even-grained porphyritic granitic rocks of Archaean origin. This Archaean bedrock is extensively weathered and laterised and

overlain by Tertiary and Quaternary alluvial, colluvial and aeolian deposits. Quartz veins and dolerite dykes are also present (Tille 2006).

North westerly trending belts of gneiss associated with Archaean greenstone belts are common in the east of the Murchison Province where the Pipelines are located. These belts contain metamorphosed mafic to ultra-mafic and felsic volcanic rocks as well as metasedimentary rocks such as banded iron formations (Tille 2006).

Soils of the Salinaland Plains Zone of Tille (2006) include red sandy earths, red deep sands, red shallow loams, and red loamy earths with some red-brown hardpan shallow loams, Salt lake soils and Red shallow sandy duplexes. On the valley floors there are salt lake soils with some red deep sands (Tille 2006).

Soils in the area are predominantly those associated with sandplains and sandy soils over granitic rocks and consist of Red sandy earths, and deep Red sands, with some Red loamy earths and calcareous loamy earths in low lying areas. The hilly terrain has red shallow loams, stony soils and red shallow sands, with some bare rock and red shallow sandy duplexes (Tille 2006).

4.2.2 Hydrology

The surficial hydrology of the east Murchison Region consists of internally draining, intermittent rivers. Infrequent surface runoff (resulting from low, unreliable rainfall rates) forms ephemeral drainage lines which feed into salt lake systems experiencing high evaporation rates. Dry river and creek beds predominate, which flood in heavy rain events (Dames and Moore 1994).

Hydrogeology of the Murchison region consists of three main aquifer types containing groundwater of ranging salinities. The internal drainage system is dominated by calcrete aquifers located in ancient river channels which feed salt lakes with groundwater containing between 1,000 mg/L and 10,000 mg/L total dissolved salts (TDS). In addition, colluvial aquifers located at the base of outcrop hills hold groundwater of around 500 parts per thousand (ppt) TDS and alluvial aquifers are present in ephemeral drainage lines (Dames and Moore 1994).

In the Northern Goldfields region, groundwater in palaeochannel aquifers typically occurs at depths of 10 to 50 metres below ground surface (DWER, 2022). In deeper fractured-rock systems such as greenstones and granites, groundwater can occur at depths exceeding 100 metres (DWER, 2022; Johnson et al., 1998). The WIL intersects the Public Drinking Water Source Area Wiluna Water Reserve.

The WIL does not intersect any major rivers.

4.2.3 Acid Sulfate Soils

Acid Sulfate Soils (ASS) are not expected to be an issue along the WIL as soils do not contain sufficient sulphide minerals, and route selection avoided wetlands and salt lakes where present. As per the Australian Soil Resource Information System, WIL is located in areas of extremely low probability of ASS.

4.2.4 Contaminated Sites

WIL does not intersect any registered contaminated sites.

4.3 Biological Environment

4.3.1 Fauna

A search of the EPBC Protected Matters database was completed in November 2023 to identify fauna of conservation significance recorded within a 40 km buffered zone of the WIL. The EPBC Protected Matters report identified two threatened species as being likely to occur within the area – *Leipoa ocellata* (Malleefowl) and *Pezoporus occidentalis* (Night

Parrot), and three species that may occur within the area – *Polytelis alexandrae* (Princess Parrot), *Liopholis kintorei* (Great Desert Skink) and *Macrotis lagotis* (Greater Bilby).

A desktop search of Department of Biodiversity, Conservation and Attraction (DBCAs) databases including SLIP and Dandjoo (November 2023) identified no fauna species of state conservation significance in the search area (6 km buffer of WIL).

Feral animals including goats, foxes, cats, camels, and rabbits have been observed in the region. These species are widespread and responsible for significant declines in native fauna presence in the region as a result of habitat destruction, competitive influences and hunting tendencies (DCCEEW, 2023).

4.3.2 Flora

The WIL is located within the East Murchison Subregion (MUR01) of the Murchison bioregion defined by the Interim Biogeographic Regionalisation for Australia (IBRA). Cowan (2001) describes the vegetation as dominated by mulga woodlands, hummock grasslands, saltbush shrublands and *Halosarcia* shrublands. Areas of red sandplains with mallee-mulga parkland over hummock grasslands occur in the east (Cowan, 2001).

Vegetation typical of the region and present within and surrounding the WIL pipeline includes *Acacia* communities comprised of *A. aneura* (mulga) and *A. quadrimarginea*, *Eremophila leucophylla* and *Ptilotus obovatus* with an understorey of *Eremophila*, *Cassia*, various ephemeral species and *Stipa* sp (Dames and Moore, 1994).

Regional vegetation is summarised in Table 4.

Table 4: Regional Vegetation

IBRA Region	Vegetation Community Descriptions
Murchison	<ul style="list-style-type: none"> • Low Mulga woodlands often rich in ephemerals on the northern part of the Yilgarn Craton; • Hummock grasslands on Quaternary sandplains; • Saltbush shrublands on calcareous soils; • <i>Halosarcia</i> low shrublands on saline alluvia; and • Areas of red sandplains with Mallee Mulga parkland over hummock grasslands occur in the east.

A desktop search of the EPBC Protected Matters, SLIP and Dandjoo databases was completed in November 2023 to identify flora of conservation significance recorded within a 40 km buffered zone of the WIL. Although no priority flora was recorded within 5km of the WIL, previous database searches identified seven Priority One, 14 Priority Three, and three Priority Four flora species. No Listed Threatened Species were identified in the EPBC Protected Matters report.

Although no wetlands of national importance (Australian Nature Conservation Agency Wetlands) or conservation category wetlands, were recorded within the project area (Cowan 2001), the WIL intersects one Environmentally Sensitive Area. A Priority Ecological Community (Unique Occurrence ID 3388) overlays the pipeline. No Threatened Ecological Communities or Threatened flora were observed along the length of the WIL.

4.3.3 Weeds

In 2021, APA engaged a third-party Botanist to conduct a desktop review of weeds likely to occur within the APA assets in the Central Goldfields region. This review informed the development of 'Weed Identification: WA Central Goldfields Region APA HSE GDE ENV 010'. Saffron Thistle (*Carthamus lanatus*) was the only declared weed assessed as having a high likelihood of occurring in the Central Goldfields Management Region.

In 2023, weed survey by third-party specialist Botanist (Biodiversity Australia) was conducted along GGP. No weeds were identified within 10km of the WIL during this survey (Biodiversity 2023).

4.3.4 Disease

Phytophthora Dieback is not an issue in the Pilbara or Goldfields regions (CALM 1994). This is due to the mean annual rainfall ranging between only 250 mm and 320 mm per annum. There is also a lack of susceptible vegetation required by *Phytophthora cinnamomi* along the pipeline route.

4.4 Social Environment

4.4.1 Heritage and Native Title

A search of the Department of Planning, Lands and Heritage (DPLH) Aboriginal Cultural Heritage Inquiry System was completed in November 2023 to confirm the status of any registered Aboriginal sites or other heritage places traversing or within the WIL PL area. Two Registered sites were identified as follows:

- Women's Ceremonial Site (ID 1369), ceremonial, coordinates not available when location is restricted; and
- Women's Ceremonial Track (ID 1370), ceremonial, coordinates not available when location is restricted.

APA acknowledges rights and interests of the native title holders whose lands the WIL intersects, inline with the applicable determination. APA shall not interfere with these native title rights or interests.

APA shall comply with all requirements of the *Aboriginal Heritage Act 1972* and avoid any works within registered or other heritage sites. Should unavoidable pipeline repairs be required within registered or other sites, a Regulation 10 approval shall be sought and the Knowledge Holders shall be contacted prior.

4.4.2 Socio-Economic

The predominant land use in the Eastern Murchison is grazing sheep, cattle, and goats on native pastures (Cowan 2001). Land use surrounding the WIL is consistent with the dominant land uses of the region and comprises pastoralism and mining. Specifically, the WIL lies within the Millbillie Pastoral Station. The nearest residence is 4 km from WIL.

The Shire of Wiluna covers a vast area of approximately 184,000 km², predominantly comprising mining and pastoral areas. The population at the last Census was just over 535 (ABS 2023) however this number is known to include "fly-in, fly-out" workers staying at mining camps.

5. Implementation Strategy

All works will be conducted in accordance with the APA Corporate Environment and Heritage Policy. It is the responsibility of the APA WA Manager Operations and Maintenance to ensure that APA Environment and Heritage policies and commitments are observed throughout all operational activities.

The APA Health, Safety, Environment and Heritage (HSEH) Management System is called 'Safeguard' (SG). SG provides a framework by which the processes relating to APA's HSEH activities are defined, implemented and controlled. Local business unit processes and procedures operating under SG management systems, provide further instruction to workers on performing activities.

SG is supported by a database, referred to as SG+. SG+ is used for functions such as incident reporting, auditing, action tracking and reporting.

The APA business tools and system used to manage and maintain all information relating to asset operations required for the implementation of management include:

- Maximo – Asset maintenance system (Work Order / Job Plan / Work Instruction)
- SG+ - Risk, actions, auditing and incident reporting system
- XIC – Landholder Contact Program, landholder information, access conditions, stakeholder consultation
- Learning Management System (LMS) – Training system used to capture APA staff information and learning materials
- SkillPASS – Contractor training, competency and accreditation system (under LMS)

SG defines the requirements for environmental management under APA's Environmental Corporate Framework. Procedures, forms and other guidance materials for environmental management is available to all personnel via APA intranet Empower.

One Environmental Risk Assessment was conducted to assess environmental risks associated with the operation of WIL. The Environmental Risk Assessment is conducted in accordance with APA's 'Risk Management System – Group Procedure' which "aligns with the principles in the international risk standard ISO 31000:2018 - Risk Management". A summary of the primary environmental hazards, control measures and mitigating factors identified for the Activity has been provided in Table 5.

Note: Table 5 is intended to be indicative of major hazards and controls only and is not comprehensive of all commitments made by APA in the EMP.

Table 5 Primary Operations Environmental Hazards and Controls / Mitigating Factors

Summary of risks and impacts	Control Measures and Mitigation Factors
Overarching	<ul style="list-style-type: none"> • Regular legislation reviews • Toolbox talks • Works Environmental Assessment Process • Environmental audits • Site inspection • Inductions • Environment Procedures
Aspect: Contamination Activity:	<ul style="list-style-type: none"> • Site inspected for leaks/spill during periodic site inspections • Vehicle prestart • OSCP testing • Drip trays

Summary of risks and impacts	Control Measures and Mitigation Factors
<p>transport, handling, waste disposal, weed spraying in PDWSA</p> <p>Impact: Ground and water contamination</p>	<ul style="list-style-type: none"> • Licenced controlled waste carrier engaged for all controlled waste transport on public roads • Spill kits • Cathodic protection • Reportable spills reported to relevant regulator verbally within 2 hours and via report within 3 days. • No refuelling on WIL • Documented mobile plant pre-start checks completed before mobilisation • Regular documented LV pre-start checks completed • Capture in place to cover ground during coating • Spill kit inspections conducted in accordance with Maximo regime • Spill response equipment appropriate to the type and amount of chemical must be available at point of use or transport • Consultation with DWER prior to any proposed pesticide use in PDWSA • Any spills of pesticides within the PDWSA must be reported to DWER
<p>Aspect: Waste</p> <p>Activity: controlled, general, hydrocarbon, NORM waste storage, handling, transport and disposal</p> <p>Impact: Ground contamination, unauthorised discharge or community nuisance</p>	<ul style="list-style-type: none"> • Licenced controlled waste carrier engaged for all controlled waste transport on public roads. Tracking receipts retained for seven years. • Abrasive blasting activities not to occur within close proximity to watercourses without sufficient capture in place. • Spent garnet is wrapped up and disposed of in hydrocarbon bin for Class III landfill disposal • Piggings waste screened for radioactivity to determine waste stream • Identify/label as NORM contaminated waste • Arrange for APA approved (licensed) NORM waste contractor for management/ disposal • Designated temporary concrete wash-down bay set up to contain liquid waste where significant volumes of concreting and equipment wash-down is required • Concrete wash-down and waste shall be captured, tested and disposed of in accordance with Landfill Waste Classification and Waste Definitions 1996 • Concrete tanker utilised wherever possible to minimise mixing of concrete on site • Bags of dry concrete to be stored in a designated, dry undercover area • All waste to be removed from site and stored at MB or CS
<p>Aspect: Heritage</p> <p>Activity: Driving, vegetation clearing, excavation</p> <p>Impact: unauthorised impact to heritage</p>	<ul style="list-style-type: none"> • Mulcher with GIS capabilities (geofencing or similar) or heritage boundaries flagged prior to clearing through heritage areas • Knowledge Holders contacted prior to any ground disturbing works inside heritage areas • Works Environmental Assessment Form completed prior to clearing or excavation • Spotter/guide engaged during LOS clearing • If heritage values or suspected human remains are unexpectedly discovered, or suspected to exist in the activity area, the activity must immediately cease in the vicinity (10m from extent) of the heritage discovery and be reported as per current APA HSE GP 07.01 Incident Reporting
<p>Aspect: Native Vegetation</p> <p>Activity: driving, vegetation clearing, excavation, weed spraying</p>	<ul style="list-style-type: none"> • Spotter/guide engaged during LOS clearing • Fire response equipment inspections in accordance with Maximo regime • Fire awareness to be reinforced during toolbox meeting • Works Environmental Assessment Form completed prior to clearing or excavation • Vehicles travelling on easement must have a fire extinguisher

Summary of risks and impacts	Control Measures and Mitigation Factors
Impact: Loss of biodiversity, fire	
Aspect: PWD Activity: Driving, vegetation clearing, excavation Impact: Introduction of new and /or spread of PWD	<ul style="list-style-type: none"> • APA vehicle washdowns bay maintained in good working order • All vehicle washdowns recorded in Washdown Register or similar • Vehicles and equipment kept clean and free of weeds and seeds • Clearing and excavation: equipment clean upon arrival
Aspect: Fauna Activity: Driving, vegetation clearing, excavation Impact: Negative or unauthorised impact to biodiversity	<ul style="list-style-type: none"> • Ramps for excavations left overnight • Fauna inspections undertaken in excavations and trenches that are left open overnight prior to work commencing • Works Environmental Assessment Form completed prior to clearing or excavation
Aspect: Gas, Light and Dust Activity: controlled and uncontrolled gas release, rupture Impact: Contribution to global warming	<ul style="list-style-type: none"> • NGER reporting in accordance with <i>National Greenhouse and Energy Reporting Act 2007</i> • NGI reporting in accordance with Environmental Protection (NEPM-NPI) Regulations 1998 • ERP is triggered for significant unplanned gas emission incidents • Site personnel are trained in the ERP
Aspect: Noise, Vibration, Amenity Activity: facility operation Impact: Stakeholder nuisance	<ul style="list-style-type: none"> • Fire response equipment inspections in accordance with Maximo regime • Fire awareness to be reinforced during toolbox meeting • Landowner notification prior to excavation and clearing • PTW for hot works in hazardous area • Vehicles travelling on easement must have a fire extinguisher
Aspect: Soil and Watercourse Activity: Excavation, dewatering/discharge, vegetation clearing Impact: acidification, erosion, unauthorised dewatering, unauthorised impact to beds and banks	<ul style="list-style-type: none"> • Where ASS/PASS cannot be avoided, APA will manage in-line with DWER treatment and management of soil and water in acid sulphate landscape guidelines • ASS desktop assessment completed prior to excavations • Topsoil must be stripped and stockpiled prior to, or at the commencement of, land disturbance activities • Vegetation/mulch to be respread following reinstatement • Easement patrols completed in accordance with maintenance regime (Maximo) • Dewatering conducted inline with DWER Water Quality Protection Note 13 • No disturbance to watercourse without Permit to Interfere with Beds and Banks • No discharge to watercourse permitted • Works Environmental Assessment Form completed prior to excavation and dewatering

6. Stakeholder Consultation

Stakeholders are identified by looking at the underlying land parcel and other layers of tenure or constraints intersecting each parcel. Stakeholder consultation is managed in the APA X-Info Connect (XIC) database, maintained by the Infrastructure Protection Team. X-Info stores all contact details, communications, land parcel details, APA access, risk level of each parcel, requirements for access and any documentation associated with the parcel. APA completes annual updates of the parcel information stored in X-Info. X-Info is used in conjunction with ARGO (Assets, Resources and GIS Online) to show the geometry for each parcel.

The main form of planned ongoing stakeholder consultation for APA pipelines is via the Third-Party Awareness Program (TPA) and the Landholder Contact Program (LCP) to achieve compliance with AS2885. Consultation is also done on an ad hoc basis for maintenance programs. Table 6 below shows the main forms of consultation that APA performs.

The following stakeholders have been identified as a direct interest in WIL operations:

- Wiluna Mining
- Millbillie Station
- Local Knowledge Holders
- DWER (PDWSA)
- DPLH (state roads)

6.1 Third Party Awareness Program

The TPA (APA-PR-QM-0006) is used to contact relevant industry, local government and utilities. The types of consultation for the TPA is in the form of meetings, emails, materials (i.e. toolbox, engagement letters, emails, calendar), multimedia (i.e. CodeSafe and e-learning), personal (i.e. meeting, face to face group presentations, conference or industry group presentation), and promotion (i.e. advertising, text message or email message, industry event, social media post). The TPA is used for providing these stakeholders with the location of the pipeline, safety and emergency requirements and APA contact if they propose to do any works in the vicinity of the pipelines. Response from recipients is not mandatory.

6.2 Landholder Contact Program

The LCP alerts landowners to the pipeline location, safety and emergency requirements, ongoing landholder contact processes and details during APA operations. Landholders are visited annually each financial year as part of the LCP (560-PR-QM-0001).

For rural or remote landholders, contact will be made via phone / email prior to APA travelling to them. There will be at least three attempts to contact the landholder to arrange a visit. If a face-to-face meeting is not desired by the landholder, the meeting will be conducted via phone. Recorded stored in X-Info.

LCP also conducts annual notification and APA branded promotional materials. APA does not require a response from the LCP recipients. The notifications are letter form.

6.3 Routine Maintenance Works

Ad hoc consultation to notify landholders of routine works that will be carried out. APA endeavours to provide advanced notice of easement works to landholders and affected stakeholders. This is via letter or email. The notifications will outline the type, duration, date

works are scheduled, APA's right of access and APA contact information. If the landholder has particular access requirements, they will also be reiterated on the notification.

Responses to these communications are not required by APA due to APA's right of access.

6.4 Third Party Works

Third party works are when an external party contacts APA as they have a project that will impact an APA pipeline. These can be activities that involve excavations, vertical and horizontal boring / drilling or installation of power lines. It may also be a connection into the APA pipeline. Third party works cannot proceed until APA has completed the necessary protection works.

The main communications to the impacted stakeholders will include description, date and duration of works. Government approvals may also be required for works, APA shall arrange approvals prior to works.

If responses are required by APA, this will be noted in the correspondence with an initial period of one month to reply. For individuals (freehold landowners), that don't reply, then APA will communicate again via the same method as well as others. If there is still no response, site visits will be made to attempt to make contact with the individual. The more time from the initial contact, the more frequent the ongoing contact is made.

For companies and government departments, when there is no reply, then alternative contacts will be used. If still no response, then the client may get involved until a determination is made. As above, the timing of the contact attempts shall become more frequent overtime.

There may be times where the client takes the lead for stakeholder consultation due to wider commitments, APA will still be a part of the process. These communications shall be recorded in X-Info.

6.5 Emergency Services

The APA emergency management team aims to consult with the district emergency management committee biennially, where possible. This is usually via a presentation at the committee meeting. The purpose of this consultation is to increase awareness of APA assets, emergency management plans and processes.

6.6 Emergency Works

Emergency works are completed when the emergency response plan is enacted.

For the consultation during an emergency, the impacted stakeholders are contacted, usually via phone with a follow up email, however APA doesn't always wait for a response. At the end of emergencies, there will be a closeout notification with the impacted parties.

Table 6: Consultation Programs

Program	Communication Methods / Materials	Frequency
TPA	Face to face meetings Letters Emails Phone calls Promotional materials Multimedia materials Presentations	Annual. The frequency of each group will be determined through the AS2885 safety management study, with high-risk groups contacted annually.
LCP – Rural / Remote	Face to face meetings	Annual contact as a minimum, however maybe more frequent if

Program	Communication Methods / Materials	Frequency
	Letters Emails Phone calls Promotional materials	determined through the AS2885 safety management study.
Routine Works	Letters Emails Phone calls	Ad hoc basis
Third Party Works	Face to face meetings Letters Emails Phone calls Risk assessments Permits / Approvals	Ad hoc basis
Emergency Services Consultation	Committee meeting Presentation Phone call Email	Biennially
Emergency works	Emails Phone calls	Ad hoc basis

6.7 Five yearly EMP Renewal Consultation

Those stakeholders that manage sensitivities which WIL intersect (Mine Site, PDWSA, heritage sites) were contacted during the five-yearly renewal. This was to ensure all guidance information regarding the sensitivities were up to date.

Wiluna Mining, the Knowledge Holders Tarlka Matuwa Piarku Aboriginal Corporation and DWER were consulted with regarding the EMP revision, refer to Table 7 for further details. If no response was received by the due date, APA followed up (ideally by another contact method, if available) to confirm they received the correspondence.

Table 8 shows additional ad hoc consultation as part of the ongoing stakeholder consultation outside the abovementioned programs for the WIL.

Table 7 Stakeholder consultation for five yearly EMP renewal

Stakeholder	Method	Detail	Date
Wiluna Mining	Phone	Spoke to Site Manager on phone informed him of the OEMP renewal and APA's intention to contact Tarlka Matuwa Piarku Aboriginal Corporation. He had no concerns. He requested to be cc'd into email to Tarlka Matuwa Piarku Aboriginal Corporation. He did not request a copy of the OEMP.	15/11/2023
Tarlka Matuwa Piarku	Phone	Provided background re the WIL and the five-year OEMP renewal. Confirmed email address.	15/11/2023
	Email	Emailed reception, the OEMP Summary and cover letter. Offered virtual meeting to discuss operations.	15/11/2023

Aboriginal Corporation		Requested feedback by 06/12/2023. Cc.'d Wiluna Mining.	
	Phone	Discussion between TMPAC and APA re whether APA was aware of whether the native title rights and interests have been extinguished on GGP. APA Advisor to check with APA legal.	13/02/2024
	Email	<p>TMPAC to APA: Thank you for your e-mail below inviting TMPAC to comment on APA's Gas Pipeline Environment Management Plan.</p> <p>Unfortunately, at that time of the year TMPAC was not in a position to consider the matter and associated documents sufficiently to provide a response in the 3 weeks provided.</p> <p>TMPAC wishes to express its intention to engage further with APA in relation to the management of the gas pipelines within the TMPAC determination, should this approach be agreeable to APA.</p> <p>Please feel free to contact me for further information.</p>	13/02/2024
	Email	<p>APA to TMPAC: Apologies for the delayed response.</p> <p>Your colleague Alex asked me to ask APA's internal legal team whether the native title rights and interests have been extinguished or suppressed for the Goldfields Gas Pipeline. They have advised that doing native title analysis of the sites is a very complex process and APA does not currently have existing analysis.</p> <p>APA is happy to have a meeting to discuss our ongoing activity and better understand TMPAC's expectations.</p> <p>Let me know if you need any further information at this stage.</p>	29/02/2024
	Email	APA has provided TMPAC with the pipeline spatial data and is progressing tenure and native title assessments.	Aug 2025
	Email	APA provided TMPAC with tenure and native title assessment results.	28/08/2025
	Email	TMPAC requested maps from APA	25/09/2025
	Email	APA agreed to develop maps	25/09/2025
	Email	<p>APA First Nations Specialist to TMPAC.</p> <p>APA provided a map for GGP and Lake Way Pipeline. However notified TMPAC that "With regards to Wiluna Gas Pipeline (Pipeline Licence 33), there seems to be an issue/misalignment with the tenure data, APA's Tenure Officer is investigating and has reached out to the Tenure Holder, and we will get a map to you once resolved."</p> <p>APA also notified TMPAC that we unfortunately cannot provide requested tenure spatial data as the tenure data belongs to Landgate, and our license agreement prohibits exports to external parties.</p> <p>APA offered a meeting to discuss.</p>	20/01/2026

	Note	No response received to date. Ongoing consultation shall be reported in AER.	30/03/26
DWER	Email	<p>APA to DWER: "Thanks so much for taking the time to chat on Tuesday. As discussed, we would like to ensure we are implementing all applicable controls when completing any maintenance works within a PDWSA. APA operates and maintains approximately 3,500 km's of pipelines extend throughout WA (screenshot below). We are regulated by the Petroleum Pipelines Act Sections of the pipeline do intersect with PDWSA's of different priority levels.</p> <p>Works are assessed internally, and advice is provided to the maintenance team to ensure activities are undertaken in accordance with current legislation. We currently follow the guidance in WQPN25 and referenced guidance notes within the doc, however would like some clarification on Condition 13 in WQPN25 please? Our assets fall within the Energy Infrastructure categories, and those related to gas pipeline refer to this Condition. Where can I assess specific information/GIS data on the locations of protection zones (WHPZ and RPZ) within each PDWSA so we can ensure additional controls are implemented.</p> <p>I've included an example of the existing Wiluna Lateral gas pipeline that intersects the P1 Wiluna Water Reserve.</p> <p>As these assets are existing we do not need to install additional infrastructure, however there is an ongoing requirement to maintain the existing pipelines to comply with Australian Standard AS2885: Pipelines Gas and Liquid Petroleum for operation and maintenance. These activities can include:</p> <ul style="list-style-type: none"> •General equipment, easement and facility maintenance •Pipeline excavation •Line of site (LOS) maintenance •Erosion, subsidence or stability issues •Pipeline protection works" 	01/03/24
	Email	DWER (Program Manager, North West Planning Advice) to APA: "Thanks for your email. Now I'm aware of the context of the query, I have passed your request for information onto our Water Source Protection Planning team. They have an oversight of all PDWSA's and relevant legislation, and can provide the advice you need from a State-wide perspective. Let me know if you don't hear back from them and I can chase it up."	01/03/24
	Email	DWER (Environment Officer, Water Source Protection Planning) to APA: "As you have mentioned Condition 13 in our WQPN25 refers to reservoir and wellhead protection zones (represented by the black hatched shape in the image below), these protection zones can be viewed online on our Public drinking water source area mapping tool. If you would like to map these protection zones in your own GIS system, you can contact our Department's spatial data team (spatial.data@dwer.wa.gov.au) and request	06/03/24

		<p>permission to access the Protection Zones for Public Drinking Water Source Areas layer.</p> <p>Furthermore, regarding Condition 13, any pre-existing approved pipeline infrastructure that passes through a protection zone will be treated the same as an existing incompatible land use under WQPN25 and “The department will not support expansion or intensification of an existing, incompatible land use unless the overall water quality contamination risk is reduced”. In the case of the maintenance activities you have provided, however, these likely would not lead to land use intensification and may be supported.</p> <p>Finally, any new or upgraded pipeline infrastructure will need to be referred to the Department for advice.</p>	
DBCA Species and Communities Branch	Email	<p>APA to DBCA:</p> <p>Hi Species and Communities Branch,</p> <p>I'm currently in the process of renewing the Environment Management Plan (EMP) for the Wiluna Gas Pipeline, in accordance with the <i>Petroleum Pipeline (Environment) Regulations</i>.</p> <p>The Wiluna Gas Pipeline is a belowground gas pipeline, constructed in 1997 and regulated by DMPE.</p> <p>While reviewing the publicly available Threatened Ecological Communities dataset (DBCA-038), I noticed that the pipeline intersects a Priority Ecological Community (PEC) – Unique Occurrence ID 3,388. I'd appreciate any information you can provide regarding this PEC so it can be appropriately addressed in the revised EMP.</p> <p>For your reference, I've attached the Environment Management Plan Public Disclosure Document.</p> <p>If you have any comments regarding the attached renewed Environment Management Plan, please return them by 23 Jul 2025.</p>	25/06/25
	Email	<p>DBCA to APA:</p> <p>Thank you for your email to the Department of Biodiversity, Conservation and Attractions.</p> <p>Your enquiry will be forwarded to the relevant area of the department for direct response.</p>	25/06/25
	Email	<p>Technical Officer at Species and Communities Program:</p> <p>Requested \$410 including GST to conduct a database search and give specific advice.</p> <p>“DBCA has not reviewed or provided comment on the environmental management plan. DBCA may provide advice on the plan at a later stage in the approvals process, if the plan is referred to DBCA by the relevant decision-making authority.”</p>	27/06/25
	Email	<p>APA to DBCA:</p> <p>Thank you for confirming that DBCA has not reviewed or provided comment on the Environment Management Plan at this stage.</p> <p>As noted in the EMP, In the infrequent event that vegetation maintenance is required in accordance with</p>	01/07/25

		<p><i>AS 2885 – Pipelines – Gas and Liquid Petroleum</i>, APA will ensure compliance with the <i>Environmental Protection (Clearing of Native Vegetation) Regulations 2004</i>, including consulting with DBCA where required under the regulations.</p> <p>Given that any potential clearing would be subject to a separate regulatory process under the clearing regulations, and that no clearing is currently proposed, we consider that a database search is not warranted at this stage. We trust this approach aligns with the regulatory framework and ensures appropriate protections are in place without duplicating effort.</p>	
--	--	---	--

Table 8: Ongoing Stakeholder Consultation

Stakeholder	Detail	Method	Frequency
DMPE	Updates to OEMP Changes to activity Reporting as per Section 9 Clearing referrals/permit applications	Email Telephone Meetings	As required
DWER	Permits/approvals/licences Controlled waste transport / contaminated sites		As required
DPLH	Heritage assessments		As required
DPIRD	Report declared weeds		As required
Clean Energy Regulator	NGER reporting		Annual
DCCEEW	NPI reporting		Annual
Local Knowledge Holder	Contacted prior to conducting ground disturbance works in registered and other sites		As required
WARC	Licensing of APA facilities to temporarily store NORM waste		As required

7. APA Contact Details

For further queries regarding the Activity please contact the WA APA Environment & Heritage Team on (08) 6189 4300 or via the APA Website <https://www.apa.com.au/contact/>.

8. References

- ASRIS (2023) The Australian Soil Resource Information System, accessed 17 November 2023 via ARGO https://www.asris.csiro.au/arcgis/rest/services/ASRIS/Acid_Sulfate_Soils/MapServer.
- Biodiversity Australia (2023). Summary Report: Goldfields Gas Pipeline Easements Sections Overview - KPs 000-1080 (ENA5494) CALM (2004) Best Practice Guidelines for the Management of Phytophthora Cinnamomi, Government of Western Australia.
- Bureau of Meteorology (BoM) 2023, accessed online November 2023 at http://www.bom.gov.au/climate/averages/tables/cw_013012.shtml.
- Cowan. 2001. Murchison 1 (MUR1 – East Murchison Subregion). Department of Conservation and Land Management. Available at: [https://www.dpaw.wa.gov.au/images/documents/about/science/projects/waaudit/murchison01_p466 - 479.pdf](https://www.dpaw.wa.gov.au/images/documents/about/science/projects/waaudit/murchison01_p466-479.pdf); accessed 16 November 2023.
- Cowan. 2001. Murchison 1 (MUR1 – East Murchison Subregion). Department of Conservation and Land Management. Available at: [https://www.dpaw.wa.gov.au/images/documents/about/science/projects/waaudit/murchison01_p466 - 479.pdf](https://www.dpaw.wa.gov.au/images/documents/about/science/projects/waaudit/murchison01_p466-479.pdf); accessed 16 November 2023.
- Dames & Moore Pty Ltd (1994) Goldfields Gas Pipeline Public Environmental Review.
- Department of Climate Change, Energy, the Environment and Water (DCCEEW) 2023, Feral animals in Australia, accessed online November 2023 at <https://www.dcceew.gov.au/environment/invasive-species/feral-animals-australia>.
- DWER (2022). Groundwater Resources of the Northern Goldfields.
- Johnson, S.L., Commander, D.P., and Martin, M.W. (1998). Hydrogeology of the Yilgarn Goldfields, Western Australia. GSWA.
- Tille, P. (2006) Resource Management Technical Report 313: Soil Landscapes of Western Australia's Arid Interior, Department of Agriculture and Food, Government of Western Australia