



Warrego Energy 127 Pty Ltd

Rannoch AGG and Etive AMAG Airborne Surveys
Environment Plan Summary

Document No: WGO-512-HSEQ-PLN-002

Rev: 1

Date: 9 February 2024

Document Status						
Rev	Author	Reviewer/s	Date	Approved for Issue / Use		
				Name	Position	Date
A	J Aitken	A Aitken	25/10/2023	A Fresson	General Manager	26/10/2023
B	J Aitken	A Aitken	30/10/2023	A Fresson	General Manager	30/10/2023
0	J Aitken	A Aitken	31/10/2023	A Fresson	General Manager	31/10/2023
1	<i>Dylan Benson</i>	<i>J Aitken</i>	09/02/2024	<i>A Fresson</i>	General Manager	09/02/2024
	D Benson	J Aitken		A Fresson		

Aside the original signed document, all paper copies of this document are uncontrolled. Revision status of any uncontrolled copy must be confirmed with the Custodian – Warrego Energy Safety Manager.

Revision to and deviations from this document are subject to change control and can only be authorised by the Custodian. All changes must be considered and meet the criteria of (a) adding value and (b) being an improvement.

The document shall be reviewed biennially by the Custodian.

Distribution List					
Company	Position	Controlled Copy Number	Company	Position	Controlled Copy Number
Warrego Energy	General Manager	1	DEMIRS	Resource and Environmental Compliance Division	2
Xcalibur	Business Manager	3			

Record of Revision		
It is certified that the amendments listed below have been incorporated in this copy of the publication		
REV NO.	SECTION	DESCRIPTION OF CHANGES
A	NA	New document created.
B	All	Incorporation of internal review comments
0	All	Issued for Use
1	All	Incorporated DEMIRS OTM amendments

Restrictions on Use

This report has been prepared specifically for Warrego Energy Pty Ltd. Neither the report nor its contents may be referred to or quoted in any statement, study, report, application, prospectus, loan, or other agreement document, without the express approval of Warrego Energy Pty Ltd.

Table of Contents

1	Overview	6
1.1	Instrument Holder	6
2	Environmental Corporate Policy	7
3	Environmental Legislation and Other Requirements.....	8
3.1	LEGISLATIVE REQUIREMENTS	8
4	Implementation Strategy	10
4.1	Environmental Management.....	10
4.2	Document Hierarchy.....	10
4.3	Systems, Practices and Procedures	11
4.4	Emergency Preparedness and Response.....	12
4.5	Training and Implementation	12
4.5.1	<i>Inductions</i>	12
5	Description of the Activity.....	13
5.1	Project Activities	14
5.1.1	<i>Mobilisation/ Demobilisation</i>	14
5.1.2	<i>Technical Specification of the Surveys</i>	15
5.1.3	<i>Re-fuelling</i>	15
5.1.4	<i>Aircraft and Equipment</i>	15
5.1.5	<i>Support Operations</i>	16
5.2	Location and Tenure	18
5.3	Schedule.....	19
5.4	Project Infrastructure and Services	19
5.4.1	<i>Aboveground Infrastructure</i>	19
5.4.2	<i>Airfields</i>	19
5.4.3	<i>Onground transport</i>	19
5.4.4	<i>Accommodation</i>	19
5.4.5	<i>Utilities</i>	19
6	Description of the Environment.....	21
6.1	Climate	21
6.2	Landform and Soils	21
6.3	Vegetation and Flora	22
6.4	Fauna	22
6.5	Surface Water	23
6.6	Groundwater.....	23
6.7	Cultural Heritage.....	24
6.8	European Heritage	24

6.9	Socio-economic Environment	24
7	Stakeholder Consultation	26
7.1	Methodology	26
7.2	Ongoing Consultation	27
7.3	Complaints Management	27
8	Identification of Environmental Risk and Impacts of the Activity	28
8.1	Environmental Objectives	28
8.2	Risk Assessment	28
9	Performance Objectives, Standards and Measurement Criteria	30
10	References	34

List of Tables

Table 1:	Details for Notification of Operator	6
Table 2:	Nominated Contractor Contact Details	6
Table 3:	Key Approvals	9
Table 4:	Summary of Aerial Survey Relevant Systems, Practices and Procedures	11
Table 5:	AGG Survey Specifications	15
Table 6:	Magnetic and Radiometric Survey Specifications	15
Table 7:	Risk Assessment Outcome Summary	30

List of Figures

Figure 1:	HSEQ Document Hierarchy	10
Figure 2:	How is FALCON AGG Acquired – Indicative Overview for Illustrative Purposes Only	13
Figure 3:	Survey Location	18
Figure 4:	Land Tenure	20
Figure 5:	Monthly Climate Data for the Survey Area	21
Figure 6:	Conservation Significant Areas	25
Figure 7:	Risk Management Process ISO 31000:2018	29

List of Attachments

- Attachment 1: HSEQ Policy
- Attachment 2: AMG Survey Area Coordinates
- Attachment 3: Stakeholder Engagement Summary

Acronyms

ACH Act	Aboriginal Cultural Heritage Act 2021 (WA)
AGG	Airborne Gravity Gradiometric
AGM	Airborne Gravity and Magnetic
AH Act	Aboriginal Heritage Act 1972 (WA)
AMAG	Airborne Magnetic and Radiometric
APPEA	Australian Petroleum Production and Exploration Association
BC Act	Biodiversity Conservation Act 2016 (WA)
BOM	Bureau of Meteorology
Bonn Convention	Convention on the Conservation of Migratory Species of Wild Animals
CAMBA	China-Australia Migratory Bird Agreement
CASA	Civil Aviation Authority
DBCA	Department of Biodiversity, Conservation and Attractions (WA)
DCCEEW	Department of Climate Change, Energy, Environment and Water
DMIRS	Department of Mines, Industry Regulation and Safety
DPIRD	Department of Primary Industries and Regional Development
DPLH	Department of Planning, Lands and Heritage
DWER	Department of Water and Environmental Regulation
EP	Environment Plan
EP Act	Environmental Protection Act 1986 (WA)
EPA	Environmental Protection Authority (WA)
EPBC Act	Environment Protection and Biodiversity Act 1999 (Cth)
EPS	Environmental Plan Summary
ERP	Emergency Response Plan
ESA	Environmentally Sensitive Area
FNA	File Notation Area
HAZID	Hazard Identification
HPA	Heritage Protection Agreement
HSEQ	Health, Safety, Environment and Quality
JAMBA	Japan-Australia Migratory Bird Agreement
JHA	Job Hazard Analysis
LGA	Local Government Authority
mbgl	Metres below ground level
MNES	Matters of National Environmental Significance
NGER Act	National Greenhouse and Energy Reporting Act 2007 (Cth)
NTP	Native Title Party
OSCAR	Online System for Comprehensive Activity Reporting
PGER Act	Petroleum and Geothermal Energy Resources Act 1969 (WA)
RIWI Act	Resources in Water and Irrigation Act 1914 (WA)
ROKAMBA	Republic of Korea-Australia Migratory Bird Agreement
UCL	Unallocated Crown Land
Xcalibur	Xcalibur Aviation (Australia) Pty Ltd
YMAC	Yamatji Marlpa Aboriginal Corporation
YPSHA	Yamatji Proponent Standard Heritage Agreement
YSRC	Yamatji South Regional Corporation

1 Overview

Warrego Energy 127 Pty Ltd (**Warrego Energy**) proposes to conduct an Airborne Gravity and Magnetic Survey (**AGM Survey**) consisting of an Airborne Gravity Gradiometric (AGG) and an Airborne Magnetic and Radiometric (AMAG) survey over the area of Exploration Permit EP512 for the purpose of ascertaining the existence of areas of potential petroleum reserves.

The process will involve the use of a single aircraft based out of CASA certified airfields and flying to the survey area to conduct the activity during daylight hours only.

The use of an AGM Survey is designed to alleviate the requirement for entry into freehold, leasehold and crown lands to limit the inconvenience to landholders and residents in the area and avoid a footprint on the land or any land disturbance.

The purpose of this Environment Plan Summary (**EPS**) is to provide an overview of the environmental impacts and risks associated with the proposed activity and demonstrate how these will be minimised to acceptable levels. This EPS provides an overview of the implementation strategy that will be used to measure and report environmental performance during the proposed airborne survey planned activities and unplanned events. This EPS has been prepared to meet the requirements of the Petroleum and Geothermal Energy Resources (Environment) Regulations 2012 (**PGER(E)R**).

Guidance on the EPS development was provided by the Department of Mines, Industry Regulation and Safety's (**DMIRS**) '*Guideline for the Development of Petroleum and Geothermal Environment Plans in Western Australia*' (DMIRS, 2022) and the '*Guidance Note – Environmental Performance Objectives, Environmental Performance Standards and Measurement Criteria for Petroleum Environment Plans*' (DMIRS, 2018).

This EPS provides a summary of the practical environmental management tools to be implemented as part of Warrego Energy Health, Safety, Environment and Quality (**HSEQ**) Management System.

It is noted that many of the activities associated with the AGM Survey will fall outside the management of the EP and this associated EPS and within the compliance requirements of the Civil Aviation Safety Authority (**CASA**).

1.1 Instrument Holder

Regulation 37 of the PGER(E)R 2012 require that an Operator is responsible for the overall management and operation of the activity at all times. The instrument holders are required to notify the Minister of the nominated Operator. Table 1 and Table 2 summarises the Instrument holder and the contracted aerial survey specialist Xcalibur Aviation (Australia) Pty Ltd) who will perform the operational activities reporting to Warrego Energy.

Table 1: Details for Notification of Operator

Resource Authority	Registered Holders	Contact Details
Exploration permit EP 512	Warrego Energy 127 Pty Ltd	Level 6, 216 St George's Tce, Perth WA 6000 Phone: +61 8 6118 1615 Email: office@warregoenergy.com

Table 2: Nominated Contractor Contact Details

Aerial Services Contractor Contact Details	
Name	David Moore
Position / Company	Business Development, Xcalibur Aviation (Australia) Pty Ltd
Address	10 Compass Road, Jandakot WA 6164, AUSTRALIA
Telephone number	+ 61 407 061 095
Email address	david.moore@xcaliburmp.com

2 Environmental Corporate Policy

Warrego Energy is committed to preventing and minimising any adverse environmental impacts from its operations.

Warrego Energy has a Health, Safety, Environment and Quality Policy (**HSEQ Policy**) (Attachment 1) that outlines the policy objectives and targets and provides a framework for activities. The HSEQ Policy is provided to all personnel including employees, contractors and subcontractors.

“Tread lightly on the land” has been a central tenet of Warrego Energy Limited from its creation and remains a core value for the Company.

3 Environmental Legislation and Other Requirements

The EP aims to ensure that the activities are performed in a manner consistent with applicable legislation, regulations and codes of industry practice. The EP outlines the key Acts and Codes within the Commonwealth, Western Australia and Australian Standards and Industry Codes. The activities conducted by Warrego Energy will comply with all relevant legislation and regulations when they come into force.

Commonwealth Legislation

- *Environment Protection and Biodiversity Conservation Act 1999;*
- *Native Title Act 1993; and*
- *National Greenhouse and Energy Reporting Act 2007.*

Western Australian Legislation

- *Aboriginal Cultural Heritage Act 2021;*
- *Aboriginal Heritage Act 1972;*
- *Biodiversity Conservation Act 2016;*
- *Bush Fires Act 1954;*
- *Conservation and Land Management Act 1984;*
- *Contaminated Sites Act 2003;*
- *Environmental Protection Act 1986;*
- *Environmental Protection Regulations 1987;*
- *Environmental Protection (Controlled Waste) Regulations 2004;*
- *Petroleum and Geothermal Energy Resources Act 1967; and*
- *Petroleum and Geothermal Energy Resources (Environment) Regulations 2012;*

Australian Standards, Guidelines and Industry Codes

- Australian Petroleum Production and Exploration Association (APPEA) Code of Environmental Practice 2008 (APPEA, 2008);
- Guideline for the development of Petroleum and Geothermal Environment Plans in Western Australia 2022;
- AS 1678: Emergency Procedure Guides;
- ASNZS ISO 14001: 2016 Environment Management; and
- ASNZS ISO 31000: 2018 Risk Management.

3.1 LEGISLATIVE REQUIREMENTS

A summary of the key approvals and notification requirements that are relevant to the operational activity are provided in Table 3.

Table 3: Key Approvals

Approval	Authority	Act / Regulation	WA / Cth	Comments
S18 Permit to Disturb	Department of Planning, Lands and Heritage (DPLH)	<i>Aboriginal Heritage Act 1972</i>	WA	Not required, no registered sites within project area will be impacted by the operational activity
Environmental Impact Assessment	Environmental Protection Authority (EPA)	Part IV of the <i>Environmental Protection Act 1986</i>	WA	Not required, no activity triggering a referral.
Native Vegetation Clearing Permit	DMIRS	<i>Environmental Protection (Clearing of Native Vegetation) Regulations 2004</i>	WA	Not required, no native vegetation clearing to be conducted.
EPBC Act Controlled Action	Department of Climate Change, Energy, the Environment and Water (DCCEEW)	<i>Environmental Protection and Biodiversity Conservation Act 1999</i>	Cth	Not required, no National Matters of Environmental Significance (NMES) impacted during operational activity.
S9 Civil Aviation Act	Civil Aviation Safety Authority (CASA)	<i>Civil Aviation Act 1988</i>	Cth	Due to airborne nature of the proposed activity, proven technologies and Contractor licensing, additional environmental approvals or permits are not required.

4 Implementation Strategy

To meet the requirements of Regulation 15(1) of the PGER(E)R, this Section describes the implementation strategy - the systems, practices, and procedures used to ensure that the environmental impacts and risks of the activities are continuously reduced to ALARP, and the environmental performance objectives and standards are achieved. It is Warrego Energy's responsibility for ensuring that the activity is managed in accordance with this implementation strategy.

4.1 Environmental Management

Environmental management is an integral part of the AGM Survey and includes the following elements as shown below, to ensure that the environmental impacts and risks are reduced and environmental management is undertaken.

Warrego Energy HSEQ Management System includes the following elements as shown in Figure 1: HSEQ Document Hierarchy Figure 1 to ensure that any environmental impacts and risks are reduced appropriately and environmental managements are undertaken.

To support this commitment, the Warrego Energy HSEQ Management System ensure a risk assessment is conducted to identify any potential environmental hazards associated with the planned activity. The risk assessment outcomes assist with the development of clearly stated environmental objectives. Practical procedures are then developed to ensure that activities are conducted in a manner which achieve the environmental objectives.

There are clearly defined responsibilities for personnel to indicate their obligations regarding environmental management, with appropriate inductions and training of personnel. The auditing program ensures ongoing assessment of compliance with procedures and the achievement of objectives including a system of reporting for recording of data, performance monitoring and notification of relevant personnel.

The HSEQ Management System is supported by ongoing consultation and communication to seek input from, and to inform, all parties of relevant issues.

4.2 Document Hierarchy

Warrego Energy's HSEQ system follows a hierarchical structure where the documents at the lower level must meet and support the requirements of those of the higher levels. The core elements and structure are illustrated below in Figure 1.

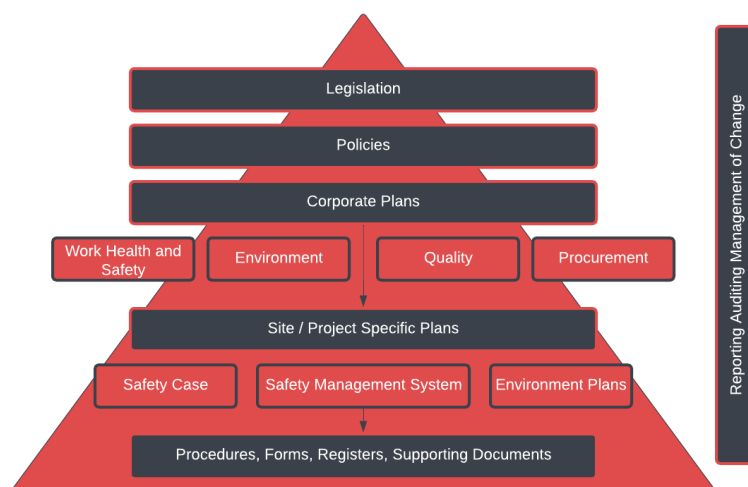


Figure 1: HSEQ Document Hierarchy

4.3 Systems, Practices and Procedures

Warrego Energy commits to identify and manage the risks and impacts of our activities to minimise adverse environmental impacts, applying leading industry standard practices in our approach. This policy applies to Warrego Energy and all its contractors and personnel working on Warrego Energy controlled workplaces and sites.

The HSEQ Policy is a fundamental component of Warrego Energy's integrated HSEQ Management System, which contains the plans, procedures, work instructions, forms, registers and supporting documents necessary to implement and comply with the HSEQ Policy commitments. Elements of the HSEQ Management System are utilised in the implementation strategy for this activity.

In relation to the execution of the survey activity, many of the systems, practices and procedures fall outside the scope of this EP and are not Warrego Energy's systems, practices or procedures. An example of this relates to all aspects associated with the aircraft and aspects controlled and monitored through other authorities such as CASA. In these cases, the contractual arrangements between Warrego Energy and these contractors manage the scope and implementation requirements.

Table 4 lists a summary of the systems, practices and procedures that are or will be in place for the implementation of the activities associated with this EP.

Table 4: Summary of Aerial Survey Relevant Systems, Practices and Procedures

System, Practice or Procedure	Implementation Objective / Purpose
HSEQ Policy	Overarching Warrego Energy Policy outlining the objectives and targets and provides a framework for activities and is provided to all personnel including employees, contractors and subcontractors.
Environmental Plan	This document outlines the planned activity, identified risks and management / mitigation measures that will be applied and reported against.
Oil Spill Contingency Plan	A section of the EP that details how any potential oil spill scenario will be managed.
Contractor HSE Management System	Contractors HSEQ management systems which meet or exceed the Warrego Energy requirements of the HSE Policy, this EP and any contractual requirements.
Contractor Licensing & Insurances	Provision to Warrego Energy's satisfaction that contractors hold current and relevant licences and insurances relevant to their activities.
Risk Management Procedure	This document presents the risk matrix and risk assessment processes applicable to any qualitative risk assessment exercises carried out in relation to Warrego Energy activities.
Stakeholder Engagement Plan	An overarching document outlining the stakeholder engagement and consultation approaches, purposes, objectives and actions for Warrego Energy.
Stakeholder Consultation Register	A register of stakeholder consultation, purposes, contacts, issues and outcomes associated with EP512 activities. This is maintained along with Stakeholder contact details within a dedicated database.
Waste Register	A register of waste collected and disposed of appropriately.
CASA Standards and Operating Regulations	To provide guidance on the development of Aircraft Contractors HSEMS and SOPs

CASA Code of Practice – Fly Neighbourly Advice within uncontrolled airspace	To promote harmonious relationship between aviation activities and environmental, conservation and other interests.
CASA AC 139-26 Wildlife Hazard Management at aerodromes (July 2011)	Cover operations at certified and registered aerodromes to ensure wildlife hazard is managed, monitored, and reported under an airdrome specific Wildlife Hazard Management Plan.
CASA AC139-12 Handling of hazardous materials on an aerodrome and Civil Aviation Order 20.9	This document outlines the requirements for fuel storage, refuelling procedure and action in the event of a fire hazard.
Xcalibur HSEMS and Standard Operations Manual/ Procedure	Establishes clear guidelines for personnel involved in this activity to achieve objective and maintain the standards set out in the EP.
Contractor’s Emergency Response Plan	To provide guidance on the management of an emergency.

4.4 Emergency Preparedness and Response

Emergency preparedness and response will be managed in accordance with Oil Spill Contingency Plan and Emergency Response Plan. Due to the duration of the AGM survey it is expected that at least one desktop emergency exercise will be completed.

4.5 Training and Implementation

Awareness of the requirements of this EP will be provided to all Warrego Energy personnel and contractors. Personnel will be informed of their obligations and the specific environmental aspects, impacts and their control measures through familiarisation with this EP prior to participation in the operational activity.

In addition to the control measures identified in this EP, a Job Hazard Analysis (**JHA**) must be completed prior to the commencement of any task that has the potential to have an adverse impact on the environment. The JHA is used to identify any additional control measures that would be necessary to minimise the environmental impact of a task.

All personnel will be suitably trained and experienced in the activities that they are to perform. Aircraft crew will hold current certification appropriate to their duties. A training, induction and competency matrix will record that relevant crew have been trained as necessary for their position.

4.5.1 Inductions

All Warrego Energy personnel and contractors must complete the survey activity induction before receiving approval to commence the activity. This induction relates to all aspects approved under this EP and excludes aircraft specific training requirements by CASA and activities conducted within areas controlled by CASA or associated authorities such as commercial airfields.

The induction outlines Warrego Energy’s environmental objectives and clearly states actions and reporting requirements in the event of an actual or potential environmental incident.

5 Description of the Activity

Warrego Energy is proposing to conduct a Falcon® Airborne Gravity Gradiometer Survey (Airborne Gravity Survey) and an Airborne Magnetic Survey using three Scintrex magnetometers mounted on wing pods and a tail stinger. A radiometric survey will also be acquired at the same time. The survey will measure extremely small variations in regional gravity and magnetic data to assist Warrego Energy's geoscientific studies into the potential for new discoveries of conventional hydrocarbons. The data collected will help Warrego Energy's geoscientists to interpret the shape of sub-surface rock structures and refine geological models and targets of the Coolcalalaya Sub-Basin.

The planned Aero Gravity survey will be acquired along a 500m flight line spacing in a roughly East to West direction. The Airborne Magnetic Survey will be acquired with a line spacing of 150m in a roughly East to West direction and the tie lines will have a 1,500 m spacing, trending roughly North to South.

Each survey will cover approximately 8,631km². The planned Aero Gravity and Magnetic Survey work activities will be completed within EP512, noting several exclusion areas as outlined in Table 3. Subject to approvals and aircraft availability, it is expected that these surveys will be commenced and substantially completed in Q1-2 CY2024.

The Airborne Survey consists of equipment installed in an aircraft and flown at low level. As the aircraft flies along a pre-determined flight path, the equipment measure minute changes in the force of gravity and magnetics which occur as a result of changes in geology within the earth's crust. This information allows what lies beneath the earth's surface to be "seen". The system is passive in nature and does not transmit any signal to the ground below. A pictorial representation of how the survey data is acquired is shown in Figure 2.

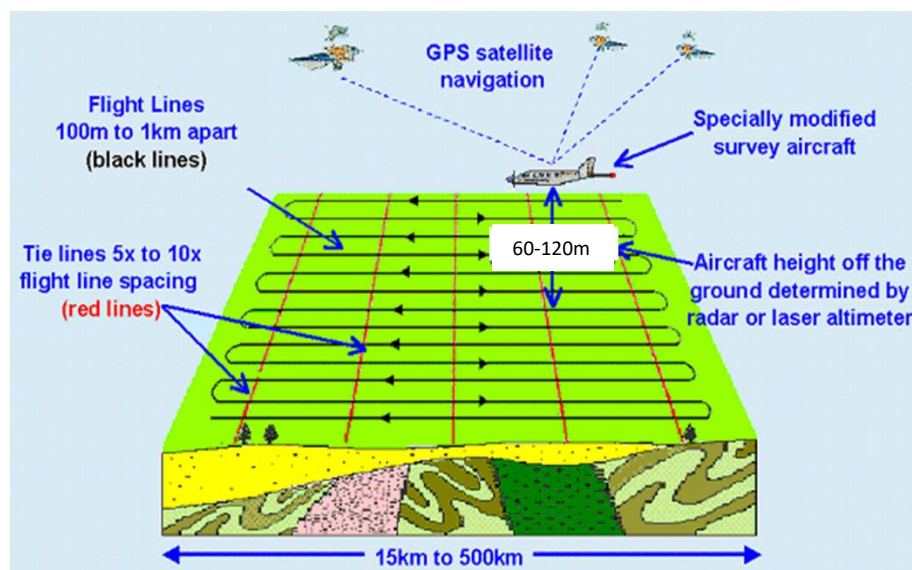


Figure 2: How is FALCON AGG Acquired – Indicative Overview for Illustrative Purposes Only

Surveys are flown along a series of equally spaced parallel flight lines. Flight lines usually oriented north-south or east-west. Tie-lines are flown at right-angles, where possible, to the main set of flight lines. The tie lines level the data obtained on the flight lines and assist in removing any errors in data.

Warrego Energy has contracted Xcalibur Aviation (Australia) Pty Ltd (**Xcalibur**), a specialist in airborne surveys, to conduct the survey. Xcalibur possess the relevant CASA licenses and authorities and all flight details will comply with CASA regulations.

5.1 Project Activities

The activity consists of acquisition and processing of airborne gravity gradiometry (**AGG**) and magnetic and radiometric (**AMAG**) data. The proposed area of data acquisition (the Survey area) covers a maximum area of approximately 8,631km² over petroleum exploration permit EP 512 in the Coolcalalaya Sub-Basin.

The Survey area is located to the east of North West Coastal Highway, with its closest point approximately 65km east of Kalbarri and 44km north-east of Northampton. The Survey area is within the Shires of Northampton, Chapman Valley, Murchison and Shark Bay and the City of Greater Geraldton, Western Australia.

The two airborne surveys are proposed for acquisition, both the AGG and AMAG Surveys will be acquired by Xcalibur over the entire area of the exploration permit EP512 with some exclusion zones.

Warrego Energy was awarded Exploration Permit EP512 with a requirement to conduct a non-invasive airborne survey in order to determine possible locations of conventional hydrocarbon deposits within the Coolcalalaya Sub-Basin.

In order to optimise exploration efforts, Warrego Energy has gained approval from the DMIRS to acquire an airborne survey across the entire permit area, before embarking on on-ground activities. The purpose of the airborne survey is to measure subtle variations in gravity and magnetics across the permit area, which will provide valuable information about the subsurface geology of the area.

Importantly, the airborne survey will assist Warrego Energy to identify any areas more likely to contain conventional hydrocarbon deposits, allowing the future of seismic surveying and drilling activities over a smaller area. In turn, this will mean reduced on-ground impact and traffic management in local communities.

The airborne survey will be undertaken by a small aircraft, to be flown at a height of approximately 60m and 120m. Only gravity and magnetic measurements will be collected during the survey - there will be no photography or other imaging over private properties.

Most areas on the flight path will only be flown over once, and the noise level on the ground anticipated to be less than a passing motorbike by way of comparison. The survey will have no impact on normal land or sea activities, or the environment.

Noise from the survey aircraft overflying a property may be up to ~80db. This is similar to the noise level of a nearby neighbour mowing their lawn, except the noise of the aircraft will last no longer than around 30 seconds and only be at 80db for a couple of seconds if directly above a listener.

The survey will be carried out by a small, fixed wing turboprop aircraft (Cessna C208 Grand Caravan - with Tail Stinger) carrying state-of-the-art technology. Turn arounds for the aircraft will depend on the weather conditions and height of the aircraft. No data will be acquired outside the EP512 survey area, noting there are additional exclusion areas within the EP512 permit area.

The aircraft will only acquire data within the defined survey area which is within the EP512 permit area. Once leaving or arriving at the survey area the aircraft will fly at CASA compliant flight levels in transit to and from a CASA certified airfield.

5.1.1 Mobilisation/ Demobilisation

The minimum survey crew will consist of:

- Survey pilot(s) who have the necessary skills and experience to safely fly the aircraft and geophysical instrumentation within survey specifications;

- A geophysical operator to operate the geophysical instrumentation; and
- An aircraft maintenance engineer (if required).

The airborne survey will be acquired using a light aircraft based and refuelled at airfields which are located outside the survey area. The AGG aircraft and AMAG aircraft will both be based at CASA certified airfields.

There is no landing or ground access required in the survey area.

5.1.2 Technical Specification of the Surveys

Table 5 and Table 6 provide specifications based on the current survey designs.

Table 5: AGG Survey Specifications

Flight Line Spacing	500m
Flight Line Direction	E-W (089 – 269 degrees)
Tie-Line Spacing	N/A
Tie-Line Direction	N/A
Minimum Line Length	11.2km
Total Flight Line Km's	~17,291km
Flying Height (Dependent on risk assessment / terrain)	120m

Note: Flight specifications are subject to recon flight and final onsite safety analysis

Table 6: Magnetic and Radiometric Survey Specifications

Flight Line Spacing	150m
Flight Line Direction	E-W (089 – 269 degrees)
Tie-Line Spacing	1,500m
Tie-Line Direction	N-S (179 – 359 degrees)
Total Flight Line Km's	~63,446km
Flying Speed (Nominal)	50 – 70 metres per second
Flying Height – Aircraft and Magnetometer (Dependent on risk assessment / terrain)	60m

Note: Flight specifications are subject to recon flight and final onsite safety analysis

The planned number of line kilometres is an estimate at this stage and may vary slightly with flight plan optimisation.

Both surveys will be conducted during daylight hours only. It should be noted that there are no ground activities proposed nor any requirement for land access.

5.1.3 Re-fuelling

The maximum fuel capacity of the survey aircraft (Cessna C208 Grand Caravan) is 1,200L.

The survey aircraft will be re-fuelled only in designated re-fuelling locations at the CASA certified airfields. Re-fuelling will be undertaken in accordance with the contractor's refuelling procedure and the airfield's procedures and systems as regulated by CASA.

5.1.4 Aircraft and Equipment

The AGG survey will be acquired utilising a fixed wing aircraft Cessna C208 Grand Caravan equipped with a Falcon Airborne Gravity Gradiometer (AGG) System to be operated by Xcalibur. The aircraft will be deployed with the following equipment systems:

- Gravity Gradiometer;

- Laser Scanner;
- GPS Positioning / Navigation Equipment;
- Radar Altimeter; and
- Digital data acquisition system.

Magnetic and radiometric data for the AMAG survey will be acquired utilising a fixed wing aircraft Cessna C208 Grand Caravan equipped with a magnetometer and radiometric system operated by Xcalibur. The aircraft will be deployed with the following equipment and ground support systems:

- Data Acquisition System;
- Magnetometer sensor mounted in a tail-stinger housing;
- Gamma-Ray Spectrometer;
- Radar altimeter;
- Navigation DGPS Receiver; and
- Magnetic Base Station.

Survey data will be transmitted to the office for processing, where a geophysical data processor will process the data and monitor data quality on a flight by flight basis.

5.1.5 Support Operations

5.1.5.1 Fuel and other chemicals

With a fuel capacity of 1,200L for the survey aircraft (Cessna C208 Grand Caravan), it is estimated that the total JET A1 fuel use will be:

- 27,500L fuel use for AGG based on approximately 35 flights across a 4-5 week period; and
- 70,000L fuel use for the AMAG based on approximately 80 flights across a 10 week period.

This is based on approximately 5 hours of production / acquisition flying per day plus flying to and from a CASA certified airfield. The total fuel consumption for the completion of both surveys across approximately a 15 week period is anticipated to be approximately 97,500L of aviation fuel.

Chemicals other than fuel, mostly lubricants and oils, will be used for routine aircraft maintenance and will be stored at the airfields' designated areas in accordance with the airfield's procedures and systems as regulated by CASA.

5.1.5.2 Water use

There is no water requirement for the proposed activity.

5.1.5.3 Waste Management

No significant waste streams are expected during the proposed activity. General waste and septic waste for field personnel will be managed in accordance with the waste management arrangements for the accommodation facility. Controlled waste may result from non-routine activities such as an aircraft maintenance or spill during re-fuelling and will be managed and disposed of in accordance with the airfield's requirements.

5.1.5.4 Rehabilitation

Due to the airborne nature of the survey, there will be no contact with the ground within the Survey Area and therefore no requirements for rehabilitation. The Oil Spill Contingency Plan addresses rehabilitation requirements in the highly unlikely event of an aircraft crash.

5.1.5.5 *Details of chemicals and other substances*

Regulation 15(9) of the PGER(E)R requires an Environment Plan to disclose the details of all chemicals to be used in the course of the petroleum activity. There are no chemicals or other substances proposed for use during the airborne surveys, and therefore no requirement to complete a Chemical Disclosure Statement for the proposed activity.

The AGM survey coordinates are provided in Attachment 2.

The survey area is comprised of a variety of land tenures and land usage types including:

- Pastoral leases and freehold land used for pasture grazing and cropping;
- Unallocated crown land;
- Gazetted reserves including nature reserves;
- Infrastructure corridors (underground gas pipeline, road reserves);

Given the airborne nature of the survey there are no requirements for any land access. Figure 43 shows the tenure of the Survey area and surrounds.

5.2 Location and Tenure

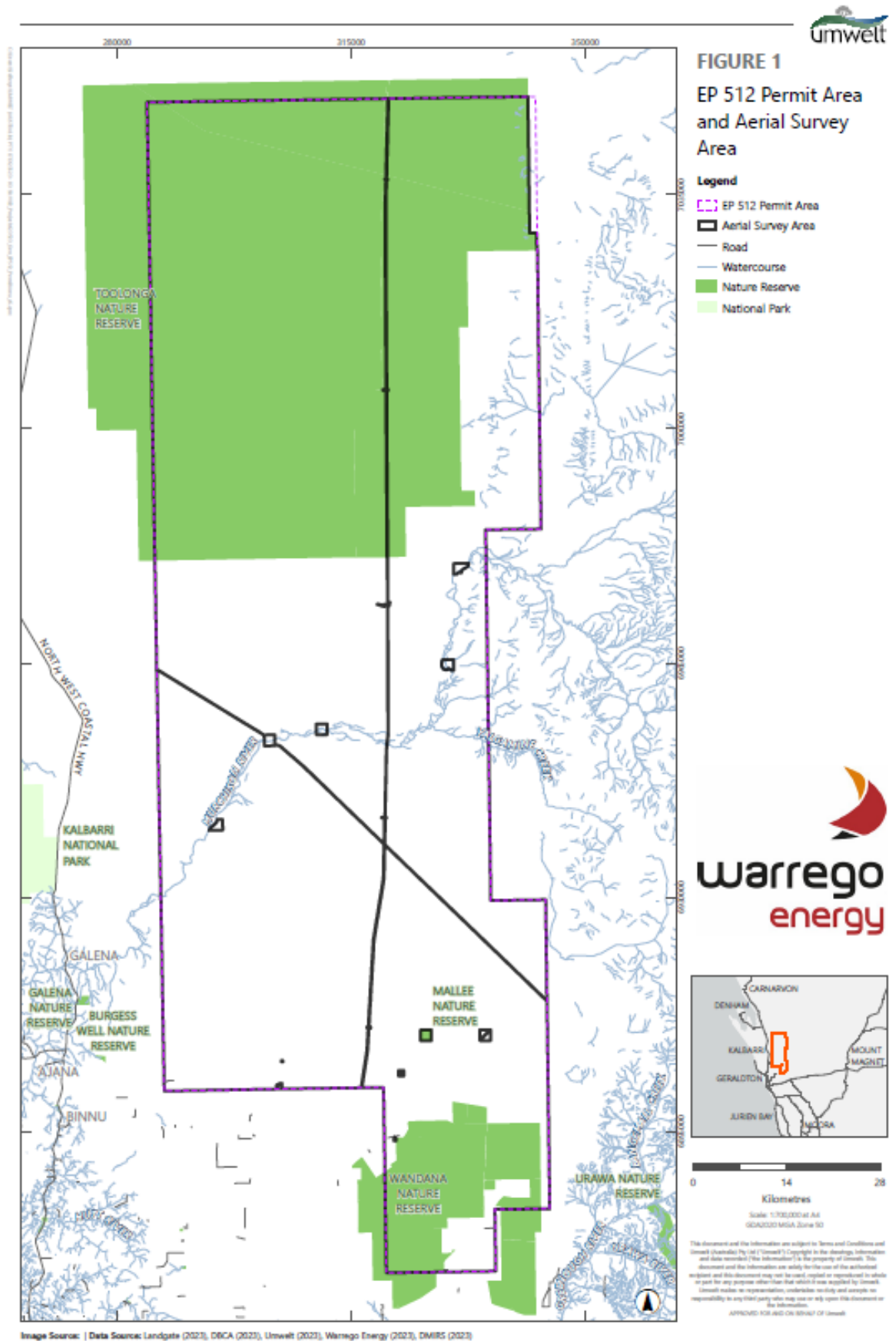


Figure 3: Survey Location

5.3 Schedule

The airborne survey is scheduled to be completed between March and August 2024. The actual duration of data acquisition for the airborne survey is approximately 90-120 days. Should the data acquisition be affected by inclement weather conditions, the survey may take up to 120 days to complete. The acquisition will be conducted during daylight hours only (6am - 5pm).

The surveys will be acquired sequentially, with only one aircraft in the survey area at any time. The expected mobilisation and demobilisation time of aircraft and crew is 1-3 days.

5.4 Project Infrastructure and Services

5.4.1 Aboveground Infrastructure

Above ground infrastructure is generally limited to electricity transmission lines, DBNGP infrastructure, communication towers and rural homesteads. Xcalibur will conduct an initial reconnaissance flight (high level) prior to survey production, to confirm the position of above ground infrastructure identified from the pre-survey risk assessment and review any other hazards.

5.4.2 Airfields

Operations will be conducted from one of the following CASA certified Airfields:

- Kalbarri (sealed airstrip, Xcalibur to supply JetA1, very limited accommodation options during holiday periods);
- Geraldton (sealed airstrip with JetA1, more accommodation options);
- Mullewa (unsealed airstrip, Xcalibur to supply JetA1, limited accommodation options but not linked to holiday periods); or
- Murchison (sealed airstrip, Xcalibur to supply JetA1, very limited accommodation options).

The airfields may be adaptively utilised based on accommodation, distance to the survey area, and weather.

5.4.3 Onground transport

There is no requirement on the ground transport of vehicles to be within the survey area during the implementation of the survey.

If there is a stakeholder query, this will be responded to by phone and email initially. If required, a single vehicle will commute to the stakeholder to meet in person in accordance with existing procedures outside the scope of this operational activity. Therefore, vehicle activity is excluded from this activity.

5.4.4 Accommodation

Warrego Energy and associated contractors will utilise existing accommodation services near the airfields outside the EP512 survey area due to proximity to CASA certified Airfield.

5.4.5 Utilities

All the survey services will be based at a CASA certified Airfield and will be under the control of CASA and are outside the approval of this activity. This includes all aspects in relation to the maintenance and refuelling of the aircraft which will occur within a CASA certified Airfield and in accordance with CASA, the specific CASA certified Airfield and Xcalibur requirements and procedures.

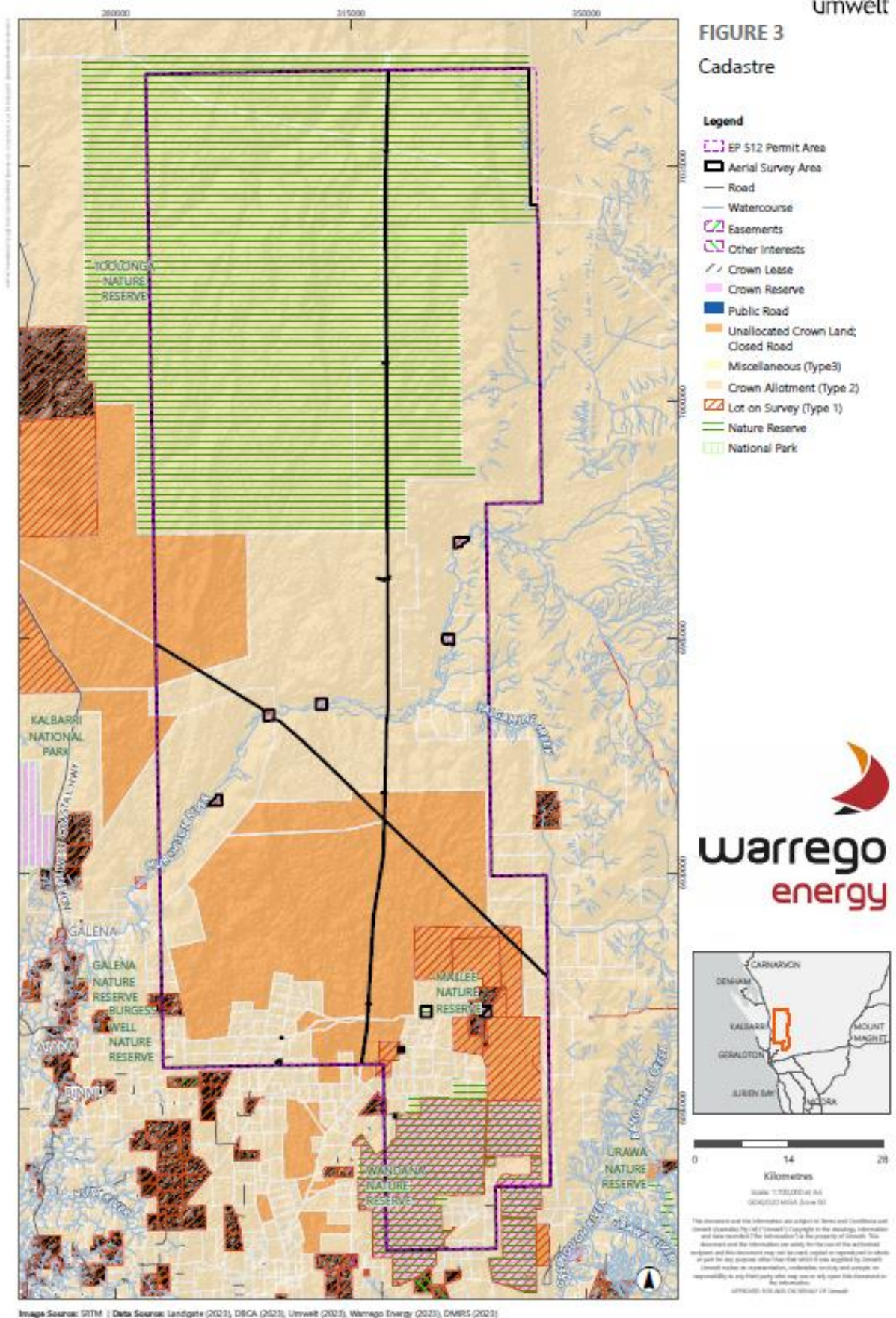


Figure 4: Land Tenure

6 Description of the Environment

6.1 Climate

The survey area receives most of its rainfall during the winter although occasional late summer cyclonic rain also occurs. The area is subject to high summer day temperatures averaging 36.9°C between December and February and low winter night temperatures averaging 17°C during June through August (BOM, 2023).

Climate records for Mullewa indicate the regional prevailing wind direction in the morning is from the east-southeast with afternoon winds coming from the southeast to southwest. This pattern is strongest in summer, and the wind direction is more variable in winter (BOM, 2023).

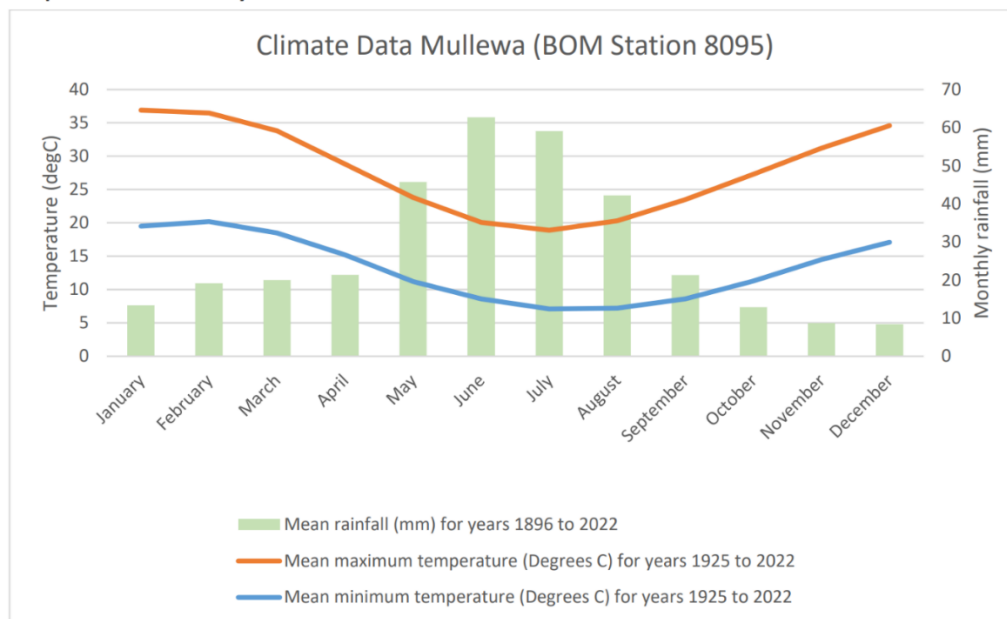


Figure 5: Monthly Climate Data for the Survey Area

6.2 Landform and Soils

The northern region of the survey area is mostly a limestone plateau overlain by late Tertiary and Quaternary sands (Burbidge, 1980). The southern region of the survey area comprises a gently undulating sandplain overlying laterite of Pleistocene and/ or late Tertiary age. The laterite crops out where the sand has been stripped away (Burbidge, 1978).

Landforms and soils across the survey area can be described as gently undulating plateau underlain by sedimentary rocks; extensive yellow sandplains with numerous dunes. Laterite is exposed in places but there are no breakaways nor exposures of block laterite. Soil can be described as yellow earthy sands (Burbidge, 1978).

The Murchison River is a prominent riparian feature in the survey area and provides the only other marked change in the land surface profile.

Dominant land use is unallocated crown land, crown reserves and lesser areas of dry-land agriculture.

Given the airborne nature of the survey, there is no need to understand erosion potential of the soil and therefore a more detailed investigation has not been undertaken.

6.3 Vegetation and Flora

Given the airborne nature of the survey, this section focuses on Environmentally Sensitive Areas (ESA) and fauna species with a conservation status that may occur within the survey area and surrounds, specifically birds and other flying species.

An environmental desktop assessment was undertaken to identify environmental sensitivities.

There is no ground disturbance or clearing activities proposed within flora/ fauna habitat and therefore it was considered that flora species, terrestrial fauna species and its habitat are not at risk of impacts from the proposed routine airborne activities.

The proposed survey area overlaps two WA State Nature Reserves. All other reserves and sensitive File Notation Areas (FNA's) have been excluded from the AGM survey. The overlap of the survey area to conservation significant areas are:

- The Toolonga Nature Reserve; and
- Wandana Nature Reserve.

Apart from the sensitivities listed above, the survey area also includes a chain of clay pans and small lakes associated with the Murchison River, and remnant vegetation that may provide habitat for protected flora/fauna species. There are no threatened ecological communities listed under the EPBC Act and BC Act.

The ESAs are subject to the Environmental Protection (Clearing of Native Vegetation) Regulations 2004 of the EP Act. For the airborne surveys, there is no ground disturbance or clearing activities proposed.

Approximately 45% of the survey area is conservation land and crown reserves for conservation of flora and fauna, 40-45% is remnant vegetation associated with Unallocated Crown Land (UCL) and 10-15% is agricultural land.

The purpose of conducting an airborne survey is to avoid on ground impact.

The proposed activity is located outside dieback risk zone and does not have a ground component and thus no hygiene requirement for aircrafts or aircraft crew.

6.4 Fauna

The Survey area is likely to have protected terrestrial fauna species (e.g. terrestrial mammals, reptiles and invertebrates). A desktop assessment was conducted using NatureMap (DBCA) and EPBC Protected Matters Search Tool to identify the possible occurrence of threatened and priority fauna species protected under the WA BC Act and the EPBC Act.

Non-conservation fauna species includes reptiles, mammals and invertebrates. These fauna species are common, widely distributed and have broad habitat preferences and therefore potentially occur throughout the survey area.

Given the airborne nature of the survey (i.e. no ground disturbance or ground access), it is unlikely that terrestrial fauna species will be directly impacted by the proposed routine airborne operational activities.

There are 8 bird species protected under the BC Act and 16 bird species protected under the EPBC Act. The NatureMap search also identified 155 non-conservation bird species that have the potential to occur in the survey area.

The identified threatened and protected bird species are predominantly related to the floristically rich shrublands that provide habitat for foraging and breeding. Birds were recorded in localities of Wandana Nature Reserve, Toolonga Nature Reserve, Ajana, Coolcalalaya,

Eurardy, Talisker, Murchison River and in nearby Kalbarri National Park. The region also provides habitat for the endangered Carnaby's Black Cockatoo (*Calyptorhynchus latirostris*).

Many species of protected birds migrate seasonally. Bird migration generally occurs north and south between breeding and wintering grounds. The bird migration period is between September and November. Several migratory birds, who are predominantly associated with the International Protection Agreements breed in other countries and arrive in Australia during August or September.

Breeding season is variable from May to June, September to October, Carnaby's Black Cockatoo breeding season is from late July/ August to late December.

Migratory seabirds, some of which are also protected by international agreements (Bonn Convention, JAMBA and CAMBA), may pass through the survey area. While they are expected to be uncommon in the survey area due to the lack of suitable roosting and breeding habitat, foraging groups of seabirds are sighted occasionally.

Birds usually fly relatively low for most of the year, generally staying under 150m. However, during migration, birds can gain altitude, and many species fly between 600m and 1,500m or higher. Several bird species are known to be nocturnal or forage mainly at night, or fly predominantly at dawn or dusk, when their flight heights are predominantly low to the ground.

It is widely acknowledged that the biggest threat to these protected bird species is loss or change to habitat, water pollution and increased salinity.

Sensitive periods for breeding and migration have been considered during the planning stage of the proposed activity.

6.5 Surface Water

The survey area includes part of the Murchison River and lies just north of the Greenough River at the southern extremity of the EP512. There is no interaction with the Greenough River by the survey area.

There is an area of Salt Lake to the east of the survey area that falls within the buffer area. The Lake Nerramyne area, as with the majority of the areas, surface water, is seasonal with the cyclone summer rains being the main source.

Due to the airborne nature of the survey, there is no expectation of any interaction with surface water areas within the survey area.

6.6 Groundwater

The survey area is located within the Greenough River and tributaries catchment area, within the Gascoyne Groundwater Area. The Murchison River flows from east to west through the survey area. The Murchison River is an ephemeral river located in the Murchison-Hill Basin. It is 300km long, the second longest river in Western Australia, and has a catchment of 14,850km². The Murchison River starts in the Robinson Ranges near Meekatharra and enters the ocean at the Murchison River estuary at Kalbarri.

The Yalgamine Creek is a small tributary of the Murchison River likely recharges from springs and terminates in the Murchison River near the eastern boundary of the survey area. The Greenough River flows from east to west approximately 15km south of the survey area.

A desktop assessment was undertaken to identify the groundwater context of the area. The survey area is located within the Gascoyne Groundwater Area, which is a proclaimed groundwater area under the Rights in Water and Irrigation Act 1914. There is no groundwater allocation plan for the survey area.

The Gascoyne Groundwater Area extends north to Kalbarri and bounds the Arrowsmith Groundwater Area east to pastoral country. The largest groundwater aquifer occurs in the Yarragadee Formation, which has an estimated yield of 22.5 million m³/year. Groundwater from fractured rock aquifers in the eastern, inland part of the region is predominantly saline, with poor yields (NARVIS, 2023).

The Yarragadee Formation comprises sand, shale and siltstone and extends 800-1,000 m deep. The water table may lie 130 metres below ground level (**mbgl**), with only the uppermost 100 m considered fresh. Salinity increases with depth towards the coast and is associated with saltwater intrusion. Groundwater underlying the Yarragadee Formation is saline (WRP 2002).

Due to the airborne nature of both surveys (activities do not interfere with surface or groundwater) further investigation of surface and ground waters has not been undertaken.

6.7 Cultural Heritage

The survey area is located within several Native Title Determined and Claim Areas comprising the following Native Title Parties (**NTP**):

- Yamatji Nation (**ILUA**) represented by Yamatji Southern Regional Corporation (**YSRC**);
- Nanda People (Determined and Claim areas);
- Wajarri Yamatji People (Determined and Claim areas); and
- Mullewa Wadjari (Claim area).

Warrego Energy has Heritage Protection Agreements (**HPA**) with each identified NTP and continued to engage with the NTPs and their relevant cultural heritage service providers.

A search of the Department of Planning, Lands and Heritage (**DPLH**) Aboriginal Heritage Inquiry System (AHIS) in January 2023 identified seven 'Registered Site' and 16 'Other Heritage Places' within the survey area. Due to the airborne nature of the survey and consultation with the NTP's there is no expectation of any interaction with surface water areas within the survey area.

6.8 European Heritage

A search (October 2023) of the State Heritage Register (inHerit) identified no European Heritage places listed within or in close proximity to the Survey area. A search of Local Government Authority locally listed Heritage Places identified two locations within the Shire of Murchison.

Given the airborne nature of the survey (i.e. no ground disturbance or ground access), it is unlikely that European heritage will be directly impacted by the proposed routine operational activities.

6.9 Socio-economic Environment

The survey area is located within a sparsely populated region with minimal settlement, transport and communications infrastructure. Northampton townsite, approximately 50 km to the west, is the nearest population centre in the vicinity of the survey area.

The economy of the region depends primarily on agriculture and tourism. Local farming includes the production of cereal crops (wheat, canola, lupins, oats) and livestock (primarily sheep). The picturesque coastal towns and nature reserves are popular holiday destinations and tourism is an important part of the local economy. The region has a long history of copper and lead mining, although the mining sector is now declining (Northampton Shire, 2023).

The survey area overlays land subject to crown reserves, unallocated crown land, crown land, roads and pipeline reserve and private freehold tenure. The area encompasses some pasture, some conservation of flora and fauna nature reserves and areas of remnant native vegetation.

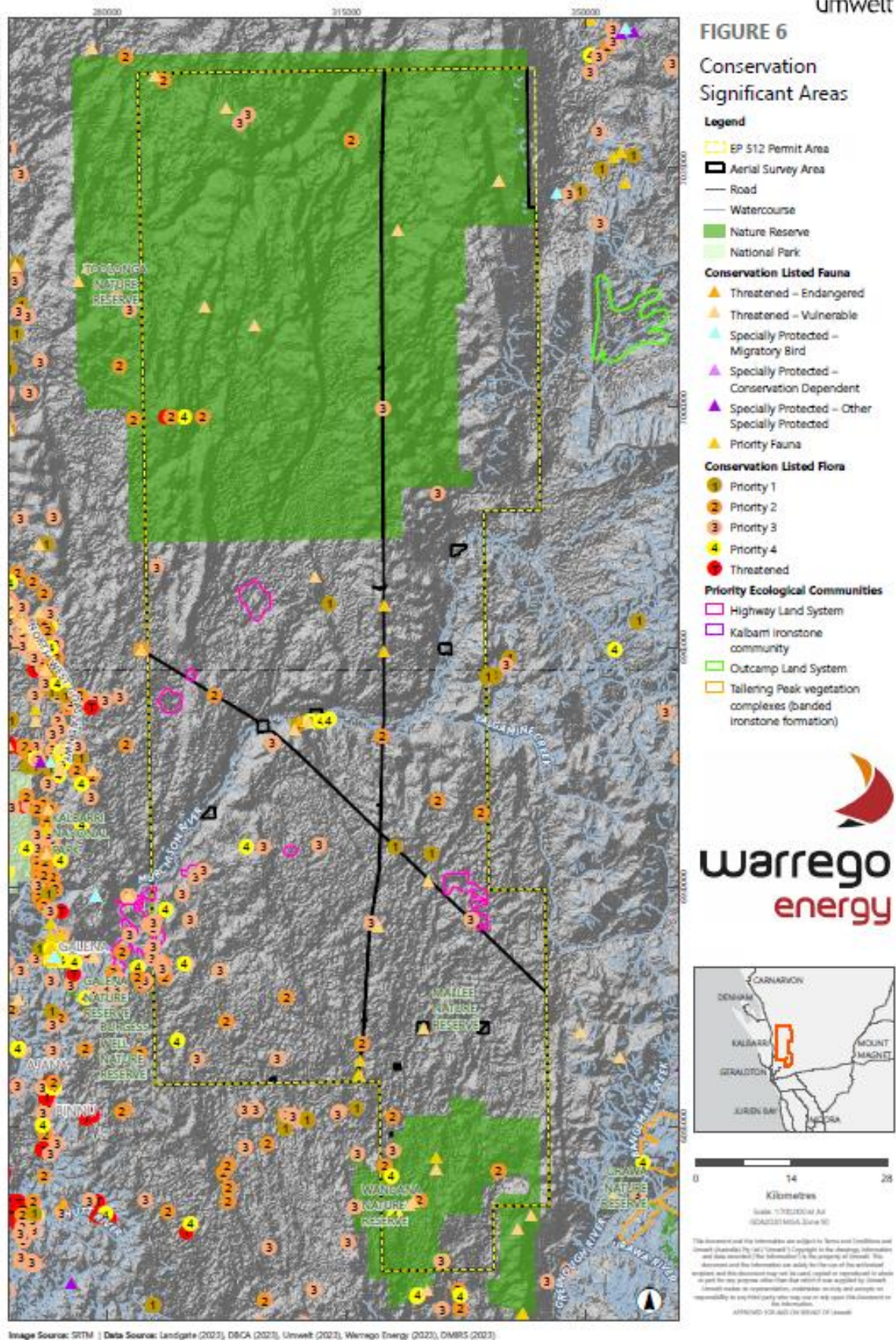


Figure 6: Conservation Significant Areas

7 Stakeholder Consultation

7.1 Methodology

Warrego Energy implemented a Stakeholder Management Plan ensuring that all stakeholder engagement processes are planned and developed in line with the requirements of the PGER(ER, the DMIRS Guideline for the Development of Petroleum and Geothermal Environment Plans (**DMIRS EP Guidelines**) in Western Australia (2022), Australian Petroleum Production & Exploration Association (**APPEA**) land access framework, Ministerial Council on Mineral and Petroleum Resources Principles for Engagement with Communities and Stakeholder (2005), AA1000 Accountability Stakeholder Engagement Standard 2015 and industry best practice.

Warrego Energy's Stakeholder Management Plan is designed to apply to all stakeholders and ensure a fluid continuous improvement approach from lessons learnt and adapt to the different operational activities being planned, implemented and closed out. The Stakeholder Management Plan fits within the broader Warrego Energy HSEQ Management System and requires at least annual review

Warrego Energy's approach to stakeholder engagement and consultation has always been inclusive and open to ensure effective engagement resulting in positive and long-term relationships with stakeholders, and Warrego Energy as Operator of the new permit intend to continue this. The stakeholder engagement and consultation to date aligns with the DMIRS EP Guidelines (Regulation 17). This includes, but is not limited to the following key principles of stakeholder engagement included in those guidelines:

- **Communication:** Consultation includes open and two-way communication which is honest and appropriate to the stakeholder and the activity being discussed. The clearly defined communication channels have demonstrated a positive consultation dialog with all stakeholders to date and enabled direct access by stakeholders to key nominated Warrego Energy representatives to enable two-way communication and effective and appropriate timeframes for consultation and understanding of the planned activities.
- **Transparency:** Transparency is a critical element of any stakeholder consultation process. Stakeholder consultation processes ensure that all communication is transparent and open to ensure that both Warrego Energy and the stakeholder understand the planned activity, the proposed timeframe for the activities, potential risks and benefits, the processes required for the activity to occur, how it will be conducted and the rehabilitation or close out of that activity. All outcomes of consultation are recorded and made available to the stakeholder to ensure that the information being captured from the consultation is accurate and reflective of both parties' understanding of the discussion and any queries or outcomes.
- **Collaboration:** To date Warrego Energy has demonstrated a clear collaboration approach to stakeholder consultation. In accordance with the Stakeholder Management Plan, identification of potential mutually beneficial outcomes and approaches to activities is a key aspect of the consultation approach. The cooperative and collaborative approach has enabled strong stakeholder relationships to continue throughout the various phases of the exploration activities and will continue. The collaboration between Warrego Energy and its stakeholders has enabled opportunities to be identified for positive or mutually beneficial outcomes and subsequently implemented.
- **Inclusiveness:** Warrego Energy's stakeholder engagement process commenced in 2019 with regard to the EP512 application (STP-EPA-0127) and is an ongoing process of inclusiveness. The inclusion of the stakeholders in the planning and preparation for activities and keeping the stakeholders informed during the entire Project life cycle has been and is a critical aspect of effective stakeholder consultation. Early engagement with

stakeholders in the infancy of project phases and the continuation of that engagement and consultation has enabled strong stakeholder relationships to be developed.

- **Integrity:** As with all key principles of stakeholder consultation and engagement, integrity is critical. Ensuring the Warrego Energy representatives engage with stakeholders to maintain an open and honest approach with integrity, enables the development of a mutual respect and trust. Warrego Energy's established stakeholder relationships have clearly demonstrated that integrity is a critical aspect and is important to Warrego Energy and all associated representatives. Demonstration of ongoing effective, open, honest and respectful communication, engagement and consultation assists with developing and maintaining good stakeholder relationships for the long term.

This consultation and communication will be continued and maintained throughout implementation of the activity and life of the Permit. All communications and engagement are recorded in Warrego Energy's dedicated stakeholder communications database.

The Stakeholder Management Plan was developed in accordance with requirements of section 3.8 of the DMIRS Guideline 2022 which includes the following key components:

- Relevant stakeholder identification, effort, analysis and mapping prior to the proposed activity;
- Provision of sufficient information and time to respond;
- Respond, address and keep records of relevant stakeholder consultation;
- Ongoing consultation, notifications, engagement and negotiations (where appropriate).

Warrego Energy is always committed to "*treading lightly on the land*" and this is reflected in our Stakeholder Engagement Plan and associated processes.

7.2 Ongoing Consultation

Warrego Energy will continue to consult with all stakeholders throughout the course of this EP. Public notices will be provided by local newsletters and local radio leading up to and during the implementation of the AGM survey.

To ensure stakeholders and the community are aware of the survey activity, the Local Governments have been provided with an overview presentation that details the activity to enable community queries to be answered or referred to Warrego Energy.

All stakeholders and community that own an aircraft within the survey area will be notified prior to the survey in accordance with CASA requirements.

Warrego Energy will continue stakeholder consultation in accordance with the Stakeholder Management Plan in advance of, during and following project activities to ensure project awareness, understanding of concerns and ensuring ongoing positive and two-way effective communication to ensure the successful implementation of the project and ongoing positive relationships.

Attachment 3 contains a summary of stakeholder engagement to date.

7.3 Complaints Management

All complaints will be documented and dealt with in an expeditious manner in accordance with Warrego Energy's Incident Reporting Procedure to ensure the minimum of duress to the complainant and to show Warrego Energy's commitment to community and stakeholder welfare. The register will be made available to the regulatory authorities upon request. Actions taken with respect to complaints will be noted and the complainant advised of the outcome.

8 Identification of Environmental Risk and Impacts of the Activity

This section details the method and outcomes Warrego Energy's hazard identification and risk assessment (**HAZID**) to identify the environmental risks associated with the survey. This section provides an analysis of the environmental risks and potential impacts associated with the AGM Survey. Appropriate management measures and control measures have been identified and applied to the survey to minimise the risk of adverse environmental impact. The activities and environmental risks are represented in APPEA's Code of Environmental Practice to be used as a basis to develop the management measures.

When an environmental risk and impact is identified, the following process is undertaken:

- Environmental risks are assessed by utilising the risk assessment process;
- Whenever possible, steps are taken to eliminate any risk to the environment. If the risk cannot be eliminated, then controls are identified and treatments are established to manage and further reduce any risk;
- Identified treatments are implemented and monitored to assist in reducing or removing any risk; and
- Ongoing monitoring and review of the Environmental Risk Assessment Register will be conducted in consultation with relevant stakeholders. Stakeholders include DMIRS, relevant contractors and Government Departments to be notified as required.

8.1 Environmental Objectives

The objectives of this EP are to:

- Demonstrate compliance with relevant legislation;
- Demonstrate that Warrego Energy has a clear understanding of how the survey will interact with the environment;
- Demonstrate that arrangements are in place to minimise adverse effects on the environment;
- Demonstrate that Warrego Energy has set appropriate performance objectives, standards and measurement criteria; and
- Ensure that systems are in place to minimise the environmental effects associated with the survey.

Environmental objectives identified for the survey are provided in Section 8.1. These objectives have been developed based on the identified risks and potential impacts associated with the activities. Section 9 also provides a summary overview of the Performance Objectives, Standards and Measurement Criteria.

8.2 Risk Assessment

Regulation 14(3)(c) of the PGER(E)R requires Warrego Energy to include details of all environmental impacts and risks arising from, or associated with the proposed activity, along with an evaluation of these impacts and risks. The assessment should consider the nature and scale of each impact or risk, and whether these are likely to be realised as a result of planned and unplanned operations. Accordingly, this assessment must detail the control measures which will be utilised to reduce the impacts and risks of the activity to ALARP and an Acceptable Level.

The purpose of the HAZID was to identify all the possible health, safety and environmental risks and hazards associated with the care and maintenance activities and to ensure that appropriate safeguards are in place to manage and maintain the facilities with the hazards at an acceptable level.

The objectives of the HAZID were to:

- Identify and systematically assess all major hazards and potential incident events associated with the identified activities, with a focus on HSE hazards;
- Evaluate the identified risks;
- Where necessary, make recommendations to eliminate or reduce risks;
- Record the workshop findings;
- Include results in the implementation procedures; and
- Provide a basis for the ongoing monitoring and closure of associated actions.

This approach aligns with the processes outlined in ISO 31000:2018 Risk Management - Principles and Guidelines (Standards Australia/Standards New Zealand 2018) (Figure 7).

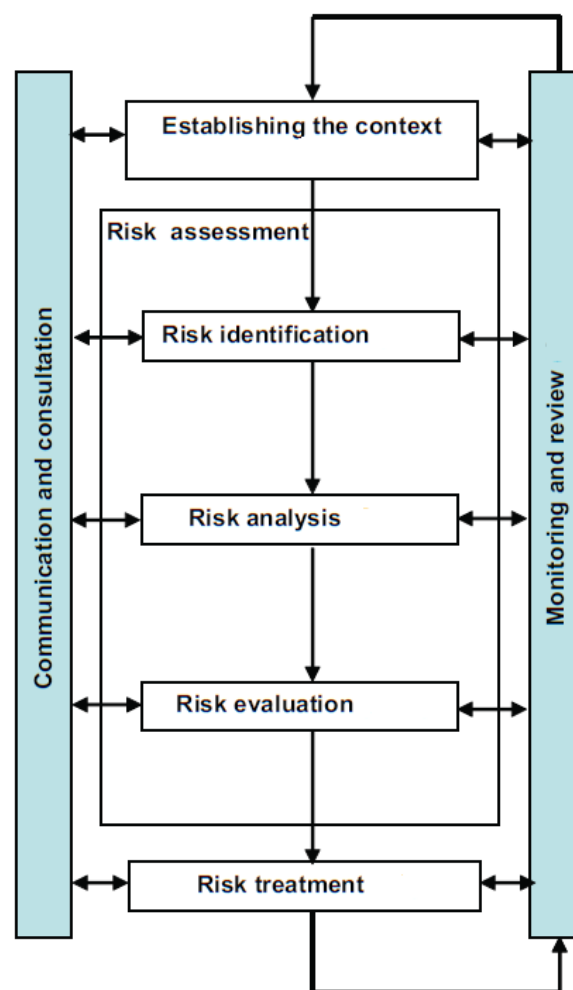


Figure 7: Risk Management Process ISO 31000:2018

The risk assessment for this EP was undertaken in accordance with Warrego Energy’s Risk and Hazard Management Procedure.

9 Performance Objectives, Standards and Measurement Criteria

Environmental performance objectives, performance standards, and measurement criteria were defined to address the potential environmental impacts and risks identified during the risk assessment in accordance with DMIRS (2018) Guidance Note.

Potential environmental impacts identified as associated with the survey will be managed by the mitigation measures strategies detailed in Table 7.

Table 7: Risk Assessment Outcome Summary

Aspect	Hazard	Mitigation Measures
Fauna	Loss of significant fauna (bird) or livestock due to aircraft activity	<ul style="list-style-type: none"> • Project induction – including Job Hazard Analysis and information about ESA’s and potential bird activity. • Licensed pilots - All personnel flying aircraft will have an appropriate licence to fly the aircraft as described in this EP. • Bird Strike Avoidance Procedure – Aircraft Crew to complete Pilot Survey Training and monitor bird activities and locations in accordance with the Bird Strike Avoidance Procedure, specifically the co-pilot will be monitoring for bird populations and the flight path (or time) may be modified for bird avoidance. All bird activity hazards, fauna strikes, or flight changes are entered into the Contractor Reporting System and reported to the ATSB. • Daylight operation only – minimised flying time / duration and allows greatest visibility of fauna. • Reconnaissance Flight Management procedures - Aircraft Crew to ensure the Reconnaissance Flight Management procedures implemented. Specifically, to allow accurate route planning, effective contingencies (emergency landing areas), identify avoidance areas, verify contract heights, and several other additional items further outlined in the procedure. • Inertial Particle Separator - can be placed in by-pass in areas of unusually high bird activity if detected. • Flight height restrictions – Flight heights are maintained to 60m and 120m Flight altitude as per contracted survey specifications and with compliance with CASA requirements over urban areas. • Stakeholder engagement – Warrego will continue engagement with relevant stakeholders before and during operations. • Aircraft Maintenance – Aircraft are maintained in accordance with manufacturer’s specification, aircraft maintenance schedule and CASA requirements to ensure that they are in good operating order and not a fire hazard. All equipment will be Regulation compliant and Pre-start checks will be used to ensure all equipment is nominal.

<p>Temporary disruption to residents, landholders and third parties and fauna / livestock through noise from aircraft movements.</p>	<p>Temporary disruption to residents, landholders and third parties and fauna / livestock through noise from aircraft movements.</p>	<ul style="list-style-type: none"> • Project induction - Warrego Energy to ensure the Aircraft Crew and other project personnel are adequately informed on locations of environmental and stakeholder sensitivities as well as related responsibilities such flight height restrictions • Aircraft noise maintenance - Ensure Aircraft has standard / compliant noise control devices fitted and maintained. • Licensed pilots - All personnel flying aircraft will have an appropriate licence to fly the aircraft as described in this EP. • Daylight operation only – minimised flying time / duration and will not be producing noise emissions during night. • Reconnaissance Flight Management procedures - Aircraft Crew to ensure the Reconnaissance Flight Management procedures implemented. Specifically, to allow accurate route planning, effective contingencies (emergency landing areas), identify avoidance areas, verify contract heights, and several other additional items further outlined in the procedure. • Flight height restrictions – Flight heights are maintained to 60m and 120m Flight altitude as per contracted survey specifications and with compliance with CASA requirements over urban areas. • Adherence to flight parameters – Unless deviation is required, the Pilot will fly designated flight paths using the specified grid for each respective survey type (500m AGG, 150m AMAG). This includes turnarounds being performed within a designated turnaround zone. • Complaints Register – Warrego Energy will record and investigate any noise emission complaints over the course of the activity and record these in the projects complaints register. • Stakeholder consultation – Warrego Energy will continue engagement (recorded in Stakeholder Engagement Register) including prior notification to the public of activity and consultation with relevant stakeholders. Notice To Airmen (NOTAM) – A NOTAM is the principal way to notify other airspace users of the survey operation. It is usual practice for pilots to review NOTAMS during their pre-flight planning.
--	--	---

<p>Contribution to increased greenhouse gas emissions through aircraft usage</p>	<p>Contribution to increased greenhouse gas emissions through aircraft usage</p>	<ul style="list-style-type: none"> • Project induction – Warrego Energy to ensure the Aircraft Crew and other project personnel are adequately trained, such as low level flying, and informed on record keeping requirements, such as fuel usage. • Licensed pilots - All personnel flying aircraft will have an appropriate licence to fly the aircraft as described in this EP. • Aircraft maintenance – Aircraft are maintained in accordance with manufacturer’s specification, aircraft maintenance schedule and CASA requirements to ensure that they are in good operating order and not producing excessive air emissions. All equipment will be Regulation complaint and Pre-start checks will be used to ensure all equipment is nominal. • Adherence to flight parameters - Aircraft Crew to ensure flight plan is optimised to avoid unnecessary trips and turns which will help reduce the overall greenhouse gas emissions • Fuel Records – Aircraft crew will record fuel usage and report this to DMIRS.
<p>Unplanned aircraft failure or crash landing resulting in land, water contamination and / or fire</p>	<p>Unplanned aircraft failure or crash landing resulting in land, water contamination and / or fire</p>	<ul style="list-style-type: none"> • Project induction - Warrego Energy to ensure the Aircraft Crew and other project personnel are adequately trained, such as low level flying, Pilot emergency training, Pilot proficiency training, and informed On Job Hazard Analysis and the OSCP. • Licensed pilots - All personnel flying aircraft will have an appropriate licence to fly the aircraft as described in this EP. • Aircraft maintenance – Aircraft are maintained in accordance with manufacturer’s specification, aircraft maintenance schedule and CASA requirements to ensure that they are in good operating order and not a fire hazard. All equipment will be Regulation complaint and Pre-start checks will be used to ensure all equipment is nominal. • Emergency Response Plan - In accordance with Regulation 32 and 46 of the Work Health and Safety (Petroleum and Geothermal Energy Operations) Regulations 2022, an Emergency Response Plan is to be in place detailing the management plan for emergencies during the project including the requirement for training drills to be conducted. • Daylight operations only – minimised flying time / duration and will allow pilots to better respond to potential emergencies if required. • Refuelling procedure – All refuelling will take place on a

		<p>CASA regulated airfield only and will not occur anywhere else.</p> <ul style="list-style-type: none">• Daily weather check – the aircraft crew will assess the weather on a daily basis to ensure the weather is appropriate for the activities described in this EP. If they are not, the pilots may choose to not fly until the weather is permitting.
--	--	---

10 References

DMIRS (2018) Guidance Note - Environmental Performance Objectives, Environmental Performance Standards and Measurement Criteria for Petroleum Environment Plans. Department of Mines, Industry Regulation and Safety, Government of Western Australia.

DMIRS (2022) Guideline for the Development of Petroleum and Geothermal Environment Plans in Western Australia. Department of Mines, Industry Regulation and Safety. Government of Western Australia.

Warrego Energy 127 Pty Ltd (2023), Rannoch AGG and Etive AMAG Airborne Surveys Environmental Plan

Attachment 1: HSEQ Policy



Occupational Health and Safety, Environment and Quality Policy

"Tread lightly on the land" has been a central tenet of Warrego Energy Limited from its creation and remains a core value for the Company. Belief and commitment to this principle comes from the General Manager and the Board of Directors.

This policy applies to all Warrego Energy Pty Ltd companies.

The Workplace Health and Safety, Environment and Quality (HSEQ) objectives are:

- realisation of Warrego Energy's tenet *"Tread lightly on the land"*
 - zero harm to a person's health
 - minimise environmental impact
 - preserve cultural heritage
 - respect our neighbours, communities, and stakeholders
- compliance with prevailing legislation
- application of appropriate international best practise
- regular review and improvement

These HSEQ objectives will be achieved by:

- fostering a culture of openness and accessibility across all areas of Warrego Energy's business;
- committing suitable resources to ensure this policy and the HSEQ objectives are achieved;
- provision of a safe working environment and safe working practices;
- definition, communication and conscientious implementation of a documented HSEQ integrated management system meeting prevailing legislation and relevant elements of AS/NZS ISO 9001:2016, AS/NZS ISO 14001:2016, AS/NZS ISO 45001:2018 and AS/NZS ISO 31000:2018;
- providing suitable and sufficient instruction, information, training and supervision to employees;
- consistent application of hazard management with a defined level of acceptable risk;
- within prevailing legislation, applying appropriate International best practise irrespective of the operating region;
- consultation with affected parties to seek to find mutually acceptable solutions; and
- undertaking of proportionate and systematic review, audit, measurement and evaluation of the systems to identify and implement improvement.

A blue ink signature of Austen Fresson, consisting of a stylized, cursive script.

Austen Fresson
General Manager
Warrego Energy Pty Ltd

Attachment 2: AMG Survey Area Coordinates

AGM Survey Boundary Point Coordinates



ET_ID	Location	AreaName	ET_X	ET_Y	ET_IDR
0	Internal	STP-EPA-0127	115.176748067229000	-27.635482448151100	0_1
1	Internal	STP-EPA-0127	115.178433653609000	-27.635537377451600	0_1
2	Internal	STP-EPA-0127	115.178434224046000	-27.635523495229500	0_1
3	Internal	STP-EPA-0127	115.178444436414000	-27.635523827951900	0_1
4	Internal	STP-EPA-0127	115.178473423591000	-27.634802882997400	0_1
5	Internal	STP-EPA-0127	115.176788411881000	-27.634747890827200	0_1
6	Internal	STP-EPA-0127	115.176778277655000	-27.634747556305400	0_1
7	Internal	R 48435	115.176876909990000	-27.632347322748500	0_1
8	Internal	R 48435	115.176582868495000	-27.632348215298000	0_1
9	Internal	R 48435	115.176583417827000	-27.632334884244800	0_1
10	Internal	STP-EPA-0127	115.176769455684000	-27.627921851227200	0_1
11	Internal	STP-EPA-0127	115.176948455001000	-27.623563857134900	0_1
12	Internal	STP-EPA-0127	115.177127432708000	-27.619205858666100	0_1
13	Internal	STP-EPA-0127	115.177306466809000	-27.614847856846000	0_1
14	Internal	STP-EPA-0127	115.177484479517000	-27.610489839320500	0_1
15	Internal	STP-EPA-0127	115.177663468381000	-27.606131831431800	0_1
16	Internal	STP-EPA-0127	115.177842429573000	-27.601773819087800	0_1
17	Internal	STP-EPA-0127	115.178020450546000	-27.597415791210700	0_1
18	Internal	STP-EPA-0127	115.178199446554000	-27.593057772948300	0_1
19	Internal	STP-EPA-0127	115.178378500444000	-27.588699845216300	0_1
20	Internal	STP-EPA-0127	115.178557447208000	-27.584341818125100	0_1
21	Internal	STP-EPA-0127	115.178735451829000	-27.579983779096400	0_1
22	Internal	STP-EPA-0127	115.178902442370000	-27.575911811294100	0_1
23	Internal	STP-EPA-0127	115.179069496950000	-27.571839752199600	0_1
24	Internal	STP-EPA-0127	115.179236457824000	-27.567766789277900	0_1
25	Internal	STP-EPA-0127	115.179403465382000	-27.563694724904500	0_1
26	Internal	STP-EPA-0127	115.179570446942000	-27.559622747661100	0_1
27	Internal	STP-EPA-0127	115.179737494090000	-27.555550769398000	0_1
28	Internal	STP-EPA-0127	115.179904408304000	-27.551478792929400	0_1
29	Internal	STP-EPA-0127	115.180071380516000	-27.547406723284300	0_1
30	Internal	STP-EPA-0127	115.180237414655000	-27.543334728826100	0_1
31	Internal	STP-EPA-0127	115.180669352850000	-27.540133726849400	0_1
32	Internal	STP-EPA-0127	115.180956377017000	-27.537949749790900	0_1
33	Internal	STP-EPA-0127	115.181235298718000	-27.535886761806500	0_1
34	Internal	STP-EPA-0127	115.181829343061000	-27.531501739091700	0_1
35	Internal	STP-EPA-0127	115.182423325274000	-27.527116798221100	0_1
36	Internal	STP-EPA-0127	115.183017334285000	-27.522731765267800	0_1
37	Internal	STP-EPA-0127	115.183059251555000	-27.519394717753700	0_1
38	Internal	STP-EPA-0127	115.183102310313000	-27.516058764844200	0_1
39	Internal	STP-EPA-0127	115.183144290688000	-27.512721807126500	0_1
40	Internal	STP-EPA-0127	115.183175222695000	-27.510422761241800	0_1
41	Internal	STP-EPA-0127	115.183206227987000	-27.508123804026700	0_1
42	Internal	STP-EPA-0127	115.183269196622000	-27.503664769869900	0_1
43	Internal	STP-EPA-0127	115.183332234217000	-27.499205734736800	0_1
44	Internal	STP-EPA-0127	115.183388152516000	-27.494965785040400	0_1
45	Internal	STP-EPA-0127	115.183444154689000	-27.490726825825400	0_1
46	Internal	STP-EPA-0127	115.183500160452000	-27.486486781118300	0_1
47	Internal	STP-EPA-0127	115.183557221321000	-27.482247742278000	0_1
48	Internal	STP-EPA-0127	115.183613199230000	-27.478007781560300	0_1

AGM Survey Boundary Point Coordinates



49	Internal	STP-EPA-0127	115.183669233694000	-27.473768810969900	0_1
50	Internal	STP-EPA-0127	115.183725272761000	-27.469528753996200	0_1
51	Internal	STP-EPA-0127	115.183782296589000	-27.465288800332500	0_1
52	Internal	STP-EPA-0127	115.183838280320000	-27.461049825197800	0_1
53	Internal	STP-EPA-0127	115.183894265645000	-27.456809761834400	0_1
54	Internal	STP-EPA-0127	115.183950303954000	-27.452570783321300	0_1
55	Internal	STP-EPA-0127	115.184007261771000	-27.448330818800700	0_1
56	Internal	STP-EPA-0127	115.184063269670000	-27.444091834897600	0_1
57	Internal	STP-EPA-0127	115.184117275723000	-27.439943778599300	0_1
58	Internal	STP-EPA-0127	115.184171249484000	-27.435796805250000	0_1
59	Internal	STP-EPA-0127	115.184225293801000	-27.431649823214900	0_1
60	Internal	STP-EPA-0127	115.184280322633000	-27.427502857038000	0_1
61	Internal	STP-EPA-0127	115.184334273678000	-27.423354786868100	0_1
62	Internal	STP-EPA-0127	115.184389278445000	-27.419207814700200	0_1
63	Internal	STP-EPA-0127	115.184443351568000	-27.415060825302600	0_1
64	Internal	STP-EPA-0127	115.184497344508000	-27.410912839678400	0_1
65	Internal	STP-EPA-0127	115.184551307692000	-27.406765845885300	0_1
66	Internal	STP-EPA-0127	115.184606343242000	-27.402618862767700	0_1
67	Internal	STP-EPA-0127	115.184660365353000	-27.398471864070400	0_1
68	Internal	STP-EPA-0127	115.184714374833000	-27.394329823216000	0_1
69	Internal	STP-EPA-0127	115.184767351316000	-27.390188851400600	0_1
70	Internal	STP-EPA-0127	115.184821318710000	-27.386047798047100	0_1
71	Internal	STP-EPA-0127	115.184875356044000	-27.381906836189600	0_1
72	Internal	STP-EPA-0127	115.184929380411000	-27.377765779727600	0_1
73	Internal	STP-EPA-0127	115.184982406418000	-27.373623804452700	0_1
74	Internal	STP-EPA-0127	115.185036405497000	-27.369482831361000	0_1
75	Internal	STP-EPA-0127	115.185090392150000	-27.365341854829800	0_1
76	Internal	STP-EPA-0127	115.185143365240000	-27.361200774294800	0_1
77	Internal	STP-EPA-0127	115.185197377568000	-27.357059794251400	0_1
78	Internal	STP-EPA-0127	115.185251203993000	-27.352931621122800	0_1
79	Internal	STP-EPA-0127	115.185271002964000	-27.352931831554400	0_1
80	Internal	STP-EPA-0127	115.185273364160000	-27.352751354825500	0_1
81	Internal	STP-EPA-0127	115.185253173953000	-27.352751150140300	0_1
82	Internal	STP-EPA-0127	115.185253317458000	-27.352737822235200	0_1
83	Internal	STP-EPA-0127	115.185287352837000	-27.350362783437300	0_1
84	Internal	STP-EPA-0127	115.185285362627000	-27.350346786929900	0_1
85	Internal	STP-EPA-0127	115.185292220717000	-27.349457505931400	0_1
86	Internal	STP-EPA-0127	115.185585100908000	-27.349459517170800	0_1
87	Internal	STP-EPA-0127	115.187303056361000	-27.349471265108400	0_1
88	Internal	STP-EPA-0127	115.187322069734000	-27.347215289594400	0_1
89	Internal	STP-EPA-0127	115.187147949768000	-27.347214103050000	0_1
90	Internal	STP-EPA-0127	115.188241773759000	-27.345451710255200	0_1
91	Internal	STP-EPA-0127	115.188617996123000	-27.345454279840200	0_1
92	Internal	STP-EPA-0127	115.188622536067000	-27.344912837013300	0_1
93	Internal	STP-EPA-0127	115.187965702431000	-27.344908352900300	0_1
94	Internal	STP-EPA-0127	115.187960449894000	-27.345532637033700	0_1
95	Internal	STP-EPA-0127	115.186917852363000	-27.347212524269800	0_1
96	Internal	STP-EPA-0127	115.185604142050000	-27.347203540786700	0_1
97	Internal	STP-EPA-0127	115.185311216018000	-27.347201543644300	0_1
98	Internal	STP-EPA-0127	115.185311331141000	-27.347187845314100	0_1

AGM Survey Boundary Point Coordinates



99 Internal	STP-EPA-0127	115.185339192916000	-27.343907835207600	0_1
100 Internal	STP-EPA-0127	115.185359097591000	-27.343907972933900	0_1
101 Internal	STP-EPA-0127	115.185360620693000	-27.343727495921100	0_1
102 Internal	STP-EPA-0127	115.185340179420000	-27.343727354833000	0_1
103 Internal	STP-EPA-0127	115.185340250211000	-27.343713831917900	0_1
104 Internal	STP-EPA-0127	115.185374257085000	-27.339905828596400	0_1
105 Internal	STP-EPA-0127	115.185407170500000	-27.336097808205700	0_1
106 Internal	STP-EPA-0127	115.185440158562000	-27.332289786828300	0_1
107 Internal	STP-EPA-0127	115.185473151566000	-27.328481762655900	0_1
108 Internal	STP-EPA-0127	115.185513092310000	-27.323986756605900	0_1
109 Internal	STP-EPA-0127	115.185552101917000	-27.319491827795500	0_1
110 Internal	STP-EPA-0127	115.185592096832000	-27.314996819700100	0_1
111 Internal	STP-EPA-0127	115.185631173305000	-27.310501796049500	0_1
112 Internal	STP-EPA-0127	115.185670148600000	-27.306006771067600	0_1
113 Internal	STP-EPA-0127	115.185708158496000	-27.301544756284500	0_1
114 Internal	STP-EPA-0127	115.185746158488000	-27.297082735982700	0_1
115 Internal	STP-EPA-0127	115.185783145103000	-27.292620791007800	0_1
116 Internal	STP-EPA-0127	115.185821183867000	-27.288159757758500	0_1
117 Internal	STP-EPA-0127	115.185858230959000	-27.283697717954600	0_1
120 Internal	STP-EPA-0127	115.186161497819000	-27.283691632420300	0_1
121 Internal	STP-EPA-0127	115.186163438762000	-27.283480771987500	0_1
122 Internal	STP-EPA-0127	115.186203337506000	-27.278987540891100	0_1
123 Internal	STP-EPA-0127	115.186243235026000	-27.274494309762100	0_1
124 Internal	STP-EPA-0127	115.186284068511000	-27.269989889072100	0_1
125 Internal	STP-EPA-0127	115.186324888517000	-27.265485468174700	0_1
126 Internal	STP-EPA-0127	115.186365722309000	-27.260981047423400	0_1
127 Internal	STP-EPA-0127	115.186406541832000	-27.256476612916600	0_1
128 Internal	STP-EPA-0127	115.186447376166000	-27.251972177667200	0_1
129 Internal	STP-EPA-0127	115.186488181864000	-27.247467742917600	0_1
130 Internal	STP-EPA-0127	115.186529002357000	-27.242963308328400	0_1
131 Internal	STP-EPA-0127	115.186569821726000	-27.238458859252300	0_1
132 Internal	STP-EPA-0127	115.186610627374000	-27.233954425311300	0_1
133 Internal	STP-EPA-0127	115.186651433933000	-27.229449976007800	0_1
134 Internal	STP-EPA-0127	115.186692225998000	-27.224945527388900	0_1
135 Internal	STP-EPA-0127	115.186732919259000	-27.220502504327900	0_1
136 Internal	STP-EPA-0127	115.186773599423000	-27.216059480237600	0_1
137 Internal	STP-EPA-0127	115.186814279583000	-27.211616457092900	0_1
138 Internal	STP-EPA-0127	115.186854959754000	-27.207173433991700	0_1
139 Internal	STP-EPA-0127	115.186895626041000	-27.202730396313300	0_1
140 Internal	STP-EPA-0127	115.186936292326000	-27.198287359581300	0_1
141 Internal	STP-EPA-0127	115.186976958638000	-27.193844321991200	0_1
142 Internal	STP-EPA-0127	115.187018756773000	-27.189344161882100	0_1
143 Internal	STP-EPA-0127	115.187060540382000	-27.184844001558600	0_1
144 Internal	STP-EPA-0127	115.187092028156000	-27.181510071872600	0_1
145 Internal	STP-EPA-0127	115.187123516008000	-27.178176141588300	0_1
146 Internal	STP-EPA-0127	115.187155004700000	-27.174842226059600	0_1
147 Internal	STP-EPA-0127	115.187193980619000	-27.170802497706100	0_1
148 Internal	STP-EPA-0127	115.187232969726000	-27.166762783562400	0_1
149 Internal	STP-EPA-0127	115.187271946241000	-27.162723055315600	0_1
150 Internal	STP-EPA-0127	115.187310921805000	-27.158683341998800	0_1

AGM Survey Boundary Point Coordinates



151 Internal	STP-EPA-0127	115.187349897908000	-27.154643613846500	0_1
152 Internal	STP-EPA-0127	115.187388859187000	-27.150603885101500	0_1
153 Internal	STP-EPA-0127	115.187430125998000	-27.146446461045600	0_1
154 Internal	STP-EPA-0127	115.187471379426000	-27.142289023645800	0_1
155 Internal	STP-EPA-0127	115.187512646284000	-27.138131599423400	0_1
156 Internal	STP-EPA-0127	115.187556762715000	-27.133729004832900	0_1
157 Internal	STP-EPA-0127	115.187600879909000	-27.129326423873600	0_1
158 Internal	STP-EPA-0127	115.187644996287000	-27.124923829448100	0_1
159 Internal	STP-EPA-0127	115.187689113646000	-27.120521235118500	0_1
160 Internal	STP-EPA-0127	115.187733215868000	-27.116118639774400	0_1
161 Internal	STP-EPA-0127	115.187777332401000	-27.111716031160100	0_1
162 Internal	STP-EPA-0127	115.187821435801000	-27.107313422460300	0_1
163 Internal	STP-EPA-0127	115.187865523819000	-27.102910828087500	0_1
164 Internal	STP-EPA-0127	115.187909627172000	-27.098508219555800	0_1
165 Internal	STP-EPA-0127	115.187953715596000	-27.094105597377500	0_1
166 Internal	STP-EPA-0127	115.187997804804000	-27.089702987930400	0_1
167 Internal	STP-EPA-0127	115.188041893185000	-27.085300365921800	0_1
168 Internal	STP-EPA-0127	115.188085968223000	-27.080897757365400	0_1
169 Internal	STP-EPA-0127	115.188130043691000	-27.076495120920200	0_1
170 Internal	STP-EPA-0127	115.188174117914000	-27.072092498083700	0_1
171 Internal	STP-EPA-0127	115.188218193127000	-27.067689875346200	0_1
172 Internal	STP-EPA-0127	115.188262267531000	-27.063287239146000	0_1
173 Internal	STP-EPA-0127	115.188306194143000	-27.058898063192900	0_1
174 Internal	STP-EPA-0127	115.190443302418000	-27.058915526016300	0_1
175 Internal	STP-EPA-0127	115.190455037817000	-27.057742380715200	0_1
176 Internal	STP-EPA-0127	115.188307648824000	-27.057724848725900	0_1
177 Internal	STP-EPA-0127	115.188015971230000	-27.057722462046200	0_1
178 Internal	STP-EPA-0127	115.188016107956000	-27.057709000840200	0_1
179 Internal	STP-EPA-0127	115.188318077154000	-27.057711471355100	0_1
180 Internal	STP-EPA-0127	115.188361355722000	-27.053359824113900	0_1
181 Internal	STP-EPA-0127	115.188404634606000	-27.049008177928000	0_1
182 Internal	STP-EPA-0127	115.188447898933000	-27.044656517262100	0_1
183 Internal	STP-EPA-0127	115.188491163375000	-27.040304870285500	0_1
184 Internal	STP-EPA-0127	115.188534414257000	-27.035953209744900	0_1
185 Internal	STP-EPA-0127	115.188578866629000	-27.031449473183200	0_1
186 Internal	STP-EPA-0127	115.188623304262000	-27.026945737303400	0_1
187 Internal	STP-EPA-0127	115.188667728411000	-27.022441986778100	0_1
188 Internal	STP-EPA-0127	115.188712166826000	-27.017938250847400	0_1
189 Internal	STP-EPA-0127	115.188756590750000	-27.013434500258800	0_1
190 Internal	STP-EPA-0127	115.188801015054000	-27.008930750547700	0_1
191 Internal	STP-EPA-0127	115.188845438757000	-27.004426999896900	0_1
192 Internal	STP-EPA-0127	115.188889848967000	-26.999923235504300	0_1
193 Internal	STP-EPA-0127	115.188934258564000	-26.995419471074900	0_1
194 Internal	STP-EPA-0127	115.188978669333000	-26.990915721073300	0_1
195 Internal	STP-EPA-0127	115.189023847489000	-26.986407989635700	0_1
196 Internal	STP-EPA-0127	115.189069026189000	-26.981900243727800	0_1
197 Internal	STP-EPA-0127	115.189114665618000	-26.977394383811000	0_1
198 Internal	STP-EPA-0127	115.189160304543000	-26.972888510314200	0_1
199 Internal	STP-EPA-0127	115.189207006361000	-26.968382078191600	0_1
200 Internal	STP-EPA-0127	115.189253693504000	-26.963875631400400	0_1

AGM Survey Boundary Point Coordinates



201 Internal	STP-EPA-0127	115.189300380833000	-26.959369185476000	0_1
202 Internal	STP-EPA-0127	115.189347053273000	-26.954862738419700	0_1
203 Internal	STP-EPA-0127	115.189393726910000	-26.950356292243800	0_1
204 Internal	STP-EPA-0127	115.189440399974000	-26.945849831581500	0_1
205 Internal	STP-EPA-0127	115.189488302971000	-26.941353891122400	0_1
206 Internal	STP-EPA-0127	115.189536205359000	-26.936857936184900	0_1
207 Internal	STP-EPA-0127	115.189584624950000	-26.932349533772900	0_1
208 Internal	STP-EPA-0127	115.189633057684000	-26.927841131484400	0_1
209 Internal	STP-EPA-0127	115.189681477601000	-26.923332715447700	0_1
210 Internal	STP-EPA-0127	115.189729883265000	-26.918824312722800	0_1
211 Internal	STP-EPA-0127	115.189778302289000	-26.914315896585900	0_1
212 Internal	STP-EPA-0127	115.189826708284000	-26.909807480237900	0_1
213 Internal	STP-EPA-0127	115.189875336658000	-26.905298254354100	0_1
214 Internal	STP-EPA-0127	115.189923966305000	-26.900789013999800	0_1
215 Internal	STP-EPA-0127	115.189972315835000	-26.896286800399100	0_1
216 Internal	STP-EPA-0127	115.190020665465000	-26.891784586764400	0_1
217 Internal	STP-EPA-0127	115.190069015195000	-26.887282373095900	0_1
218 Internal	STP-EPA-0127	115.190117350148000	-26.882780145664000	0_1
219 Internal	STP-EPA-0127	115.190165685993000	-26.878277931748200	0_1
220 Internal	STP-EPA-0127	115.190214022158000	-26.873775704263000	0_1
221 Internal	STP-EPA-0127	115.190262357420000	-26.869273476732300	0_1
222 Internal	STP-EPA-0127	115.190310678699000	-26.864771248988700	0_1
223 Internal	STP-EPA-0127	115.190359001306000	-26.860269007689500	0_1
224 Internal	STP-EPA-0127	115.190407322007000	-26.855766766332700	0_1
225 Internal	STP-EPA-0127	115.190454471107000	-26.851382262662600	0_1
226 Internal	STP-EPA-0127	115.190501605211000	-26.846997744467100	0_1
227 Internal	STP-EPA-0127	115.190548753251000	-26.842613227461400	0_1
228 Internal	STP-EPA-0127	115.190595887089000	-26.838228709480200	0_1
229 Internal	STP-EPA-0127	115.190643021800000	-26.833844191619400	0_1
230 Internal	STP-EPA-0127	115.190690141505000	-26.829459660136900	0_1
231 Internal	STP-EPA-0127	115.190737275953000	-26.825075142491800	0_1
232 Internal	STP-EPA-0127	115.190784396417000	-26.820690610336100	0_1
233 Internal	STP-EPA-0127	115.190831516737000	-26.816306079191200	0_1
234 Internal	STP-EPA-0127	115.190878623077000	-26.811921533536300	0_1
235 Internal	STP-EPA-0127	115.190965459084000	-26.809991670421900	0_1
236 Internal	STP-EPA-0127	115.191158787582000	-26.805699633024700	0_1
237 Internal	STP-EPA-0127	115.191352088357000	-26.801407595730000	0_1
238 Internal	STP-EPA-0127	115.191545375508000	-26.797115557815700	0_1
239 Internal	STP-EPA-0127	115.191738648006000	-26.792823521074200	0_1
240 Internal	STP-EPA-0127	115.191931907119000	-26.788531469274800	0_1
241 Internal	STP-EPA-0127	115.192125151372000	-26.784239432185400	0_1
242 Internal	STP-EPA-0127	115.192267909445000	-26.781066182664800	0_1
243 Internal	STP-EPA-0127	115.192410667095000	-26.777892934124200	0_1
244 Internal	R 40819	115.192552793522000	-26.774733419092400	0_1
245 Internal	R 40819	115.194189838203000	-26.774792716068000	0_1
246 Internal	R 40819	115.194222248839000	-26.774071271449000	0_1
247 Internal	R 40819	115.192575442329000	-26.774011634048500	0_1
248 Internal	R 40819	115.192283356268000	-26.774001047923100	0_1
249 Internal	R 40819	115.192283965001000	-26.773987313308300	0_1
251 Internal	R 40819	115.192585849070000	-26.773998254614600	0_1

AGM Survey Boundary Point Coordinates



252	Internal	STP-EPA-0127	115.192670128986000	-26.772124173407300	0_1
253	Internal	STP-EPA-0127	115.192820276540000	-26.768783761439800	0_1
254	Internal	STP-EPA-0127	115.192828659218000	-26.768597571138400	0_1
255	Internal	STP-EPA-0127	115.192831424547000	-26.768536019722200	0_1
256	Internal	STP-EPA-0127	115.193003700652000	-26.764684759018000	0_1
257	Internal	STP-EPA-0127	115.193175977084000	-26.760833498493900	0_1
258	Internal	STP-EPA-0127	115.193348238780000	-26.756982237055400	0_1
259	Internal	STP-EPA-0127	115.193520501023000	-26.753130962260900	0_1
260	Internal	STP-EPA-0127	115.193720996016000	-26.748626904991300	0_1
261	Internal	STP-EPA-0127	115.193921491203000	-26.744122846975600	0_1
262	Internal	STP-EPA-0127	115.194121972718000	-26.739618775400500	0_1
263	Internal	STP-EPA-0127	115.194322426053000	-26.735114718063100	0_1
264	Internal	STP-EPA-0127	115.194522864734000	-26.730610646251900	0_1
265	Internal	STP-EPA-0127	115.194722311950000	-26.726113741461700	0_1
266	Internal	STP-EPA-0127	115.194921745224000	-26.721616850203700	0_1
267	Internal	STP-EPA-0127	115.195121164987000	-26.717119945404900	0_1
268	Internal	STP-EPA-0127	115.195320123647000	-26.712620372160600	0_1
269	Internal	STP-EPA-0127	115.195519067601000	-26.708120798899700	0_1
270	Internal	STP-EPA-0127	115.195717998085000	-26.703621211196000	0_1
271	Internal	STP-EPA-0127	115.195916914864000	-26.699121624391600	0_1
272	Internal	STP-EPA-0127	115.196115817970000	-26.694622036682000	0_1
273	Internal	STP-EPA-0127	115.196314706375000	-26.690122449859600	0_1
274	Internal	STP-EPA-0127	115.196513567265000	-26.685622848417500	0_1
275	Internal	STP-EPA-0127	115.196712427331000	-26.681123260676400	0_1
276	Internal	STP-EPA-0127	115.196911259864000	-26.676623660121300	0_1
277	Internal	STP-EPA-0127	115.197110078963000	-26.672124045126200	0_1
278	Internal	STP-EPA-0127	115.197308884193000	-26.667624443667600	0_1
279	Internal	STP-EPA-0127	115.197407312840000	-26.665396498747100	0_1
280	External	STP-EPA-0127	115.251369330690000	-26.665395635577500	0_1
281	External	STP-EPA-0127	115.334707683968000	-26.665397225864400	0_1
282	External	STP-EPA-0127	115.406617704891000	-26.665401270121400	0_1
283	External	STP-EPA-0127	115.406617790498000	-26.667484784803900	0_1
284	External	STP-EPA-0127	115.406617978657000	-26.671961437671100	0_1
285	External	STP-EPA-0127	115.406618168620000	-26.676438058167100	0_1
286	External	STP-EPA-0127	115.406618375559000	-26.680914711455500	0_1
287	External	STP-EPA-0127	115.406618567249000	-26.685391330375400	0_1
288	External	STP-EPA-0127	115.406618775552000	-26.689867936045900	0_1
289	External	STP-EPA-0127	115.406618984445000	-26.694344524676100	0_1
290	External	STP-EPA-0127	115.406619176619000	-26.698821112320000	0_1
291	External	STP-EPA-0127	115.406619379769000	-26.703297730882100	0_1
292	External	STP-EPA-0127	115.406619549029000	-26.707774354583100	0_1
293	External	STP-EPA-0127	115.406619734943000	-26.712250962325700	0_1
294	External	STP-EPA-0127	115.406619938104000	-26.716727583905000	0_1
295	External	STP-EPA-0127	115.406620125802000	-26.721204186456500	0_1
296	External	STP-EPA-0127	115.406620315635000	-26.725680805382500	0_1
297	External	STP-EPA-0127	115.406620505255000	-26.730157392813800	0_1
298	External	STP-EPA-0127	115.406620687940000	-26.734633998322400	0_1
299	External	STP-EPA-0127	115.406620870199000	-26.739110587679100	0_1
300	External	STP-EPA-0127	115.406621051580000	-26.743587193374900	0_1
301	External	STP-EPA-0127	115.406621237271000	-26.748063803733200	0_1

AGM Survey Boundary Point Coordinates



302	External	STP-EPA-0127	115.406621423531000	-26.752540398852500	0_1
303	External	STP-EPA-0127	115.406621609918000	-26.757017010321500	0_1
304	External	STP-EPA-0127	115.406621795907000	-26.761493603832000	0_1
305	External	STP-EPA-0127	115.406621999646000	-26.765970175977000	0_1
306	External	STP-EPA-0127	115.406622170309000	-26.770446765902800	0_1
307	External	STP-EPA-0127	115.406622357654000	-26.774923338964000	0_1
308	External	STP-EPA-0127	115.406622535464000	-26.779399900281600	0_1
309	External	STP-EPA-0127	115.406622711080000	-26.783876428273500	0_1
310	External	STP-EPA-0127	115.406622888837000	-26.788352972635500	0_1
311	External	STP-EPA-0127	115.406623051840000	-26.792829518734500	0_1
312	External	STP-EPA-0127	115.406623216206000	-26.797306064945900	0_1
313	External	STP-EPA-0127	115.406623411315000	-26.801782596254800	0_1
314	External	STP-EPA-0127	115.406623577389000	-26.806259143581700	0_1
315	External	STP-EPA-0127	115.406623762077000	-26.810735680382400	0_1
316	External	STP-EPA-0127	115.406623946119000	-26.815212217271800	0_1
317	External	STP-EPA-0127	115.406624130546000	-26.819688752456000	0_1
318	External	STP-EPA-0127	115.406614377893000	-26.819686431985800	0_1
319	External	STP-EPA-0127	115.406614378254000	-26.819701653784300	0_1
320	External	STP-EPA-0127	115.406624130317000	-26.819891591460200	0_1
321	External	STP-EPA-0127	115.406614378072000	-26.819889312517100	0_1
322	External	STP-EPA-0127	115.406614466783000	-26.824075158599600	0_1
323	External	STP-EPA-0127	115.406614556056000	-26.828261005111600	0_1
324	External	STP-EPA-0127	115.406614645114000	-26.832446835796100	0_1
325	External	STP-EPA-0127	115.406614733741000	-26.836632665995900	0_1
326	External	STP-EPA-0127	115.406614825723000	-26.840818512904200	0_1
327	External	STP-EPA-0127	115.406614915504000	-26.845004342156400	0_1
328	External	STP-EPA-0127	115.406615007069000	-26.849190156505500	0_1
329	External	STP-EPA-0127	115.410208631800000	-26.849190237802500	0_1
330	External	STP-EPA-0127	115.413802238886000	-26.849190192273100	0_1
331	External	STP-EPA-0127	115.417395847579000	-26.849190081516200	0_1
332	External	STP-EPA-0127	115.417395865371000	-26.853097823795400	0_1
333	External	STP-EPA-0127	115.417395869690000	-26.857005572052800	0_1
334	External	STP-EPA-0127	115.417395872925000	-26.860913303859900	0_1
335	External	STP-EPA-0127	115.417395876649000	-26.864821050827600	0_1
336	External	STP-EPA-0127	115.417395891415000	-26.868728777869900	0_1
337	External	STP-EPA-0127	115.417395889761000	-26.872623639674300	0_1
338	External	STP-EPA-0127	115.417395888996000	-26.872636488281000	0_1
339	External	STP-EPA-0127	115.418046411370000	-26.872636611472100	0_1
340	External	STP-EPA-0127	115.418046477118000	-26.882640732137800	0_1
341	External	STP-EPA-0127	115.418046357882000	-26.915398067243100	0_1
342	External	STP-EPA-0127	115.418047064874000	-26.998730314678100	0_1
343	External	STP-EPA-0127	115.418048591479000	-27.082064972428100	0_1
344	External	STP-EPA-0127	115.418049570865000	-27.165399341384800	0_1
345	External	STP-EPA-0127	115.418048349616000	-27.248730592830300	0_1
346	External	STP-EPA-0127	115.334713145568000	-27.248729515908300	0_1
347	External	STP-EPA-0127	115.334712615680000	-27.332063130389400	0_1
348	External	STP-EPA-0127	115.334712294177000	-27.415396984264700	0_1
349	External	STP-EPA-0127	115.334715283112000	-27.498731223799400	0_1
350	External	STP-EPA-0127	115.334720487851000	-27.582068902027000	0_1
351	External	STP-EPA-0127	115.334723685191000	-27.665406355237200	0_1

AGM Survey Boundary Point Coordinates



352	External	STP-EPA-0127	115.334726368284000	-27.748741864710900	0_1
353	External	STP-EPA-0127	115.418059289848000	-27.748742202092000	0_1
354	External	STP-EPA-0127	115.418061410955000	-27.832077534218100	0_1
355	Internal	R 36656	115.418063328191000	-27.885045384867200	0_1
356	Internal	R 36656	115.416267918482000	-27.883470594370700	0_1
357	Internal	R 36656	115.413055777923000	-27.880653003296000	0_1
358	Internal	R 36656	115.409843817038000	-27.877835342366900	0_1
359	Internal	R 36656	115.406632011615000	-27.875017598695900	0_1
360	Internal	R 36656	115.403420387861000	-27.872199784346000	0_1
361	Internal	R 36656	115.399827540844000	-27.869046287588400	0_1
362	Internal	R 36656	115.396234903269000	-27.865892694564500	0_1
363	Internal	R 36656	115.392642474915000	-27.862739017945500	0_1
364	Internal	R 36656	115.389050255976000	-27.859585242428500	0_1
365	Internal	R 36656	115.385458248437000	-27.856431368977200	0_1
366	Internal	R 36656	115.381866449191000	-27.853277399398600	0_1
367	Internal	R 36656	115.378406482391000	-27.850238986987800	0_1
368	Internal	R 36656	115.374805574421000	-27.847076605144200	0_1
369	Internal	R 36656	115.371204862531000	-27.843914127574400	0_1
370	Internal	R 36656	115.367604359941000	-27.840751550861700	0_1
371	Internal	R 36656	115.364004066578000	-27.837588877751500	0_1
372	Internal	R 36656	115.360403983462000	-27.834426105586300	0_1
373	Internal	R 36656	115.356804095296000	-27.831263236930200	0_1
374	Internal	R 36656	115.353204431319000	-27.828100282999600	0_1
375	Internal	R 36656	115.349604976449000	-27.824937231920700	0_1
376	Internal	R 36656	115.346005730665000	-27.821774082829000	0_1
377	Internal	R 36656	115.342406680727000	-27.818610836506300	0_1
378	Internal	R 36656	115.339525387572000	-27.816078188756200	0_1
379	Internal	R 36656	115.337357017267000	-27.814172087719300	0_1
380	Internal	R 36656	115.335188744025000	-27.812265959270400	0_1
381	Internal	R 36656	115.332358678305000	-27.809779942680900	0_1
382	Internal	R 36656	115.329528752016000	-27.807293855809500	0_1
383	Internal	R 36656	115.329120720695000	-27.806934733093700	0_1
384	Internal	R 36656	115.325785561814000	-27.804002714763400	0_1
385	Internal	R 36656	115.322450569364000	-27.801070599794500	0_1
386	Internal	R 36656	115.319115773358000	-27.798138414755500	0_1
387	Internal	R 36656	115.315781144579000	-27.795206143978600	0_1
388	Internal	R 36656	115.312446698165000	-27.792273791288600	0_1
389	Internal	R 36656	115.309112433103000	-27.789341354898700	0_1
390	Internal	R 36656	115.305778348156000	-27.786408847459800	0_1
391	Internal	R 36656	115.302444446523000	-27.783476257308900	0_1
392	Internal	R 36656	115.299110712182000	-27.780543568936400	0_1
393	Internal	R 36656	115.295832004611000	-27.777658936609700	0_1
394	Internal	R 36656	115.292553464336000	-27.774774221232300	0_1
395	Internal	R 36656	115.289275106578000	-27.771889421216100	0_1
396	Internal	R 36656	115.285996916885000	-27.769004550852000	0_1
397	Internal	R 36656	115.282718893399000	-27.766119597510100	0_1
398	Internal	R 36656	115.279441052341000	-27.763234560518400	0_1
399	Internal	R 36656	115.276163379270000	-27.760349453264300	0_1
400	Internal	R 36656	115.272885872348000	-27.757464262215500	0_1
401	Internal	R 36656	115.269608548791000	-27.754578987616100	0_1

AGM Survey Boundary Point Coordinates



402 Internal	R 36656	115.266331391119000	-27.751693642814400	0_1
403 Internal	R 36656	115.263054415747000	-27.748808214507300	0_1
404 Internal	R 36656	115.259777986079000	-27.745922367045300	0_1
405 Internal	R 36656	115.256501737445000	-27.743036448773600	0_1
406 Internal	R 36656	115.253225671020000	-27.740150448003600	0_1
407 Internal	R 36656	115.249949757150000	-27.737264377927600	0_1
408 Internal	R 36656	115.246674025714000	-27.734378208266100	0_1
409 Internal	R 36656	115.243398474962000	-27.731491983250200	0_1
410 Internal	R 36656	115.240123093366000	-27.728605661246600	0_1
411 Internal	R 36656	115.236847877424000	-27.725719269315200	0_1
412 Internal	R 36656	115.233572830387000	-27.722832793085600	0_1
413 Internal	R 36656	115.230297965177000	-27.719946247192000	0_1
414 Internal	R 36656	115.227023266793000	-27.717059617031500	0_1
415 Internal	R 36656	115.223749323427000	-27.714172400258900	0_1
416 Internal	R 36656	115.220475547600000	-27.711285114656000	0_1
417 Internal	R 36656	115.217201952743000	-27.708397743276500	0_1
418 Internal	R 36656	115.213928512180000	-27.705510303856200	0_1
419 Internal	R 36656	115.210655267730000	-27.702622779815400	0_1
420 Internal	R 36656	115.207382175760000	-27.699735171522300	0_1
421 Internal	R 36656	115.204109266408000	-27.696847494738100	0_1
422 Internal	R 36656	115.200836523694000	-27.693959733039600	0_1
423 Internal	R 36656	115.197563962785000	-27.691071887555200	0_1
424 Internal	R 36656	115.194291570239000	-27.688183972579500	0_1
425 Internal	R 36656	115.191019345257000	-27.685295973690500	0_1
426 Internal	R 36656	115.187869453193000	-27.682514369573100	0_1
427 Internal	R 36656	115.184719730382000	-27.679732680618800	0_1
428 Internal	R 36656	115.181570160091000	-27.676950936417200	0_1
429 Internal	R 36656	115.178420742776000	-27.674169108119400	0_1
430 Internal	R 48435	115.175271494633000	-27.671387195964000	0_1
431 Internal	R 48435	115.175456119983000	-27.666899119785000	0_1
432 Internal	R 48435	115.175640731440000	-27.662411030108800	0_1
433 Internal	R 48435	115.175825329813000	-27.657922939581300	0_1
434 Internal	R 48435	115.176009898864000	-27.653434849794300	0_1
435 Internal	R 48435	115.176194469011000	-27.648946760245900	0_1
436 Internal	R 48435	115.176379024286000	-27.644458656286000	0_1
437 Internal	R 48435	115.176563553308000	-27.639970552205300	0_1
0 Internal	R 1806	115.283626371500000	-27.427263630336300	0_2
1 Internal	R 1806	115.283626022575000	-27.423189508558200	0_2
2 Internal	R 1806	115.279379399700000	-27.423189662370400	0_2
3 Internal	R 1806	115.275132778195000	-27.423189689366600	0_2
4 Internal	R 1806	115.270886157050000	-27.423189591338900	0_2
5 Internal	R 1806	115.266639534482000	-27.423189354726300	0_2
6 Internal	R 1806	115.265824045095000	-27.424814659929100	0_2
7 Internal	R 1806	115.266131549325000	-27.425765168440400	0_2
8 Internal	R 1806	115.265791676832000	-27.426513854631900	0_2
9 Internal	R 1806	115.265186223916000	-27.428511442866100	0_2
10 Internal	R 1806	115.265106385649000	-27.430243521338300	0_2
11 Internal	R 1806	115.265582310720000	-27.431911156912900	0_2
12 Internal	R 1806	115.266465121042000	-27.434013953623500	0_2
13 Internal	R 1806	115.267917006039000	-27.435673989330800	0_2

AGM Survey Boundary Point Coordinates



14 Internal	R 1806	115.270376955011000	-27.436730723686900	0_2
15 Internal	R 1806	115.272440202471000	-27.436973924405900	0_2
16 Internal	R 1806	115.274277348750000	-27.436610443506200	0_2
17 Internal	R 1806	115.274744276229000	-27.436092860589100	0_2
18 Internal	R 1806	115.275246491321000	-27.434915273313800	0_2
19 Internal	R 1806	115.276465737604000	-27.434966753159600	0_2
20 Internal	R 1806	115.277284509785000	-27.435774545118600	0_2
21 Internal	R 1806	115.280054896877000	-27.437714437568800	0_2
22 Internal	R 1806	115.283627264275000	-27.437714452160200	0_2
23 Internal	R 1806	115.283626999278000	-27.434526101802700	0_2
24 Internal	R 1806	115.283626734248000	-27.431337738383700	0_2
0 Internal	R 1807	115.291391083154000	-27.306716454676000	0_3
1 Internal	R 1807	115.293465436687000	-27.305490894697800	0_3
2 Internal	R 1807	115.296548943881000	-27.306410291985200	0_3
3 Internal	R 1807	115.297450347215000	-27.305861081833900	0_3
4 Internal	R 1807	115.297620876497000	-27.303476499786100	0_3
5 Internal	R 1807	115.299432291478000	-27.301561765806100	0_3
6 Internal	R 1807	115.301294149932000	-27.300936826025900	0_3
7 Internal	R 1807	115.301313176154000	-27.300930441244100	0_3
8 Internal	R 1807	115.307166469470000	-27.297724755644700	0_3
9 Internal	R 1807	115.308082723409000	-27.295118094689100	0_3
10 Internal	R 1807	115.308114113839000	-27.293671448094300	0_3
11 Internal	R 1807	115.303606242199000	-27.293671628990600	0_3
12 Internal	R 1807	115.299098356777000	-27.293671656998900	0_3
13 Internal	R 1807	115.294590470530000	-27.293671545814200	0_3
14 Internal	R 1807	115.290082584531000	-27.293671293643600	0_3
15 Internal	R 1807	115.285574698784000	-27.293670902291500	0_3
16 Internal	R 1807	115.285574725703000	-27.297302137594300	0_3
17 Internal	R 1807	115.285574767167000	-27.300933359624600	0_3
18 Internal	R 1807	115.285574795472000	-27.304564596022600	0_3
19 Internal	R 1807	115.285574822976000	-27.308195831595800	0_3
20 Internal	R 1807	115.289690911922000	-27.308195818459900	0_3
0 Internal	R 48435	115.176278886414000	-27.632347988225700	0_4
1 Internal	R 48435	115.176268692302000	-27.632347978694600	0_4
2 Internal	R 48435	115.175862826130000	-27.632347336617500	0_4
3 Internal	STP-EPA-0127	115.175765505399000	-27.634714571933700	0_4
4 Internal	STP-EPA-0127	115.171117468939000	-27.634562837876000	0_4
5 Internal	STP-EPA-0127	115.171116923377000	-27.634576388240600	0_4
6 Internal	STP-EPA-0127	115.171107198324000	-27.634576070434700	0_4
7 Internal	STP-EPA-0127	115.171077513246000	-27.635297514695800	0_4
8 Internal	STP-EPA-0127	115.175735294751000	-27.635449437148800	0_4
9 Internal	R 48435	115.175555013920000	-27.639833549572000	0_4
10 Internal	R 48435	115.175374719178000	-27.644217662191900	0_4
11 Internal	R 48435	115.175194409746000	-27.648601760557800	0_4
12 Internal	R 48435	115.175014087183000	-27.652985872667900	0_4
13 Internal	R 48435	115.174833749907000	-27.657369971425600	0_4
14 Internal	R 48435	115.174653385513000	-27.661754071107600	0_4
15 Internal	R 48435	115.174473020629000	-27.666138154916400	0_4
16 Internal	R 48435	115.174292641567000	-27.670522253357000	0_4
17 Internal	R 36656	115.171086773005000	-27.667685551948600	0_4

AGM Survey Boundary Point Coordinates



18 Internal	R 36656	115.167881072259000	-27.664848780533900	0_4
19 Internal	R 36656	115.164675525346000	-27.662011925417200	0_4
20 Internal	R 36656	115.161470144176000	-27.659175000321000	0_4
21 Internal	R 36656	115.158264932794000	-27.656338004423600	0_4
22 Internal	R 36656	115.155059888331000	-27.653500925981800	0_4
23 Internal	R 36656	115.151646246240000	-27.650479249717800	0_4
24 Internal	R 36656	115.148232785822000	-27.647457503490000	0_4
25 Internal	R 36656	115.144819506492000	-27.644435660248000	0_4
26 Internal	R 36656	115.141406423223000	-27.641413731957600	0_4
27 Internal	R 36656	115.137993522768000	-27.638391721181900	0_4
28 Internal	R 36656	115.134580816288000	-27.635369625396200	0_4
29 Internal	R 36656	115.131168291583000	-27.632347445372000	0_4
30 Internal	R 36656	115.128158112806000	-27.629680953505400	0_4
31 Internal	R 36656	115.125148073974000	-27.627014404240100	0_4
32 Internal	R 36656	115.122138173258000	-27.624347784938600	0_4
33 Internal	R 36656	115.119128427859000	-27.621681095856400	0_4
34 Internal	R 36656	115.115862880658000	-27.618787886105400	0_4
35 Internal	R 36656	115.112597513632000	-27.615894593432200	0_4
36 Internal	R 36656	115.109332301215000	-27.613001230152900	0_4
37 Internal	R 36656	115.106067270963000	-27.610107783133800	0_4
38 Internal	R 36656	115.102802407657000	-27.607214252196600	0_4
39 Internal	R 36656	115.099537725221000	-27.604320651097900	0_4
40 Internal	R 36656	115.096273197278000	-27.601426980407800	0_4
41 Internal	R 36656	115.093008850620000	-27.598533212545000	0_4
42 Internal	R 36656	115.089744686560000	-27.595639387266900	0_4
43 Internal	R 36656	115.086480675378000	-27.592745464483400	0_4
44 Internal	R 36656	115.083216846931000	-27.589851473514500	0_4
45 Internal	R 36656	115.080025547924000	-27.587021561588100	0_4
46 Internal	R 36656	115.076834417320000	-27.584191565521600	0_4
47 Internal	R 36656	115.073643454857000	-27.581361498875900	0_4
48 Internal	R 36656	115.070452645546000	-27.578531348835100	0_4
49 Internal	R 36656	115.067262005073000	-27.575701143621200	0_4
50 Internal	R 36656	115.064071530899000	-27.572870853443900	0_4
51 Internal	R 36656	115.060881223981000	-27.570040480148600	0_4
52 Internal	R 36656	115.057691072667000	-27.567210051576800	0_4
53 Internal	R 36656	115.054501086570000	-27.564379538107600	0_4
54 Internal	R 36656	115.050904732857000	-27.561516741074300	0_4
55 Internal	R 36656	115.047308575226000	-27.558653859536900	0_4
56 Internal	R 36656	115.043712612848000	-27.555790881786800	0_4
57 Internal	R 36656	115.040116818413000	-27.552927804766200	0_4
58 Internal	R 36656	115.036521218960000	-27.550064644232700	0_4
59 Internal	R 36656	115.032925801560000	-27.547201385598800	0_4
60 Internal	R 36656	115.029330579333000	-27.544338029987000	0_4
61 Internal	R 36656	115.025735539130000	-27.541474575441000	0_4
62 Internal	R 36656	115.022140679639000	-27.538611037318300	0_4
63 Internal	R 36656	115.018546017274000	-27.535747402349800	0_4
64 Internal	R 36656	115.015648015803000	-27.53288157189909100	0_4
65 Internal	R 36656	115.012750041964000	-27.530019230032000	0_4
66 Internal	R 1804	115.011659331811000	-27.527151500341000	0_4
67 Internal	R 1804	115.011658788456000	-27.52428379902935200	0_4

AGM Survey Boundary Point Coordinates



68 Internal	R 1804	115.011658258067000	-27.527924656033100	0_4
69 Internal	R 1804	115.011657600690000	-27.524536145565900	0_4
70 Internal	R 1804	115.011656959436000	-27.521147649220100	0_4
71 Internal	R 1804	115.007607758431000	-27.521147956613200	0_4
72 Internal	R 1804	115.003558557835000	-27.521148165750900	0_4
73 Internal	R 1804	114.999509359170000	-27.521148249580300	0_4
74 Internal	R 1804	114.995460172617000	-27.521148206442600	0_4
75 Internal	R 36656	114.991371703285000	-27.518835932749600	0_4
76 Internal	R 36656	114.987283415275000	-27.516523533731200	0_4
77 Internal	R 36656	114.983195295199000	-27.514211021864300	0_4
78 Internal	R 36656	114.979107343282000	-27.511898384552800	0_4
79 Internal	R 36656	114.975019572673000	-27.509585622023600	0_4
80 Internal	R 36656	114.970931955799000	-27.507272747447700	0_4
81 Internal	R 36656	114.966844520241000	-27.504959746823100	0_4
82 Internal	R 36656	114.963995985728000	-27.503347836791600	0_4
83 Internal	R 36656	114.961147535953000	-27.501735857189800	0_4
84 Internal	R 36656	114.958299169406000	-27.500123835081600	0_4
85 Internal	R 36656	114.955751210623000	-27.498681602430600	0_4
86 Internal	R 36656	114.951797842928000	-27.496443955130500	0_4
87 Internal	R 36656	114.947844643297000	-27.494206182766900	0_4
88 Internal	R 36656	114.943891598056000	-27.491968313146800	0_4
89 Internal	R 36656	114.939938720669000	-27.489730329354700	0_4
90 Internal	R 36656	114.935985996868000	-27.487492236626300	0_4
91 Internal	R 36656	114.932033439142000	-27.485254016227400	0_4
92 Internal	R 36656	114.928081036815000	-27.483015697812800	0_4
93 Internal	R 36656	114.924128788347000	-27.480777255220000	0_4
94 Internal	R 36656	114.919906054086000	-27.478384710681400	0_4
95 Internal	R 36656	114.915683488698000	-27.475992040698800	0_4
96 Internal	R 36656	114.911461104607000	-27.473599230154800	0_4
97 Internal	R 36656	114.907238902547000	-27.471206293538900	0_4
98 Internal	R 36656	114.903016881466000	-27.468813232679400	0_4
99 Internal	R 36656	114.902915334454000	-27.468755676977900	0_4
100 Internal	R 36656	114.902791603275000	-27.468685548853600	0_4
101 Internal	R 36656	114.899231165515000	-27.466668582715400	0_4
102 Internal	R 36656	114.895670868407000	-27.464651533196900	0_4
103 Internal	R 36656	114.892110697052000	-27.462634385657700	0_4
104 Internal	R 36656	114.888550665314000	-27.460617155672900	0_4
105 Internal	R 36656	114.884990745180000	-27.458599826597100	0_4
106 Internal	R 36656	114.881430964931000	-27.456582400687800	0_4
107 Internal	R 36656	114.877162228473000	-27.454162152926500	0_4
108 Internal	R 36656	114.872893659680000	-27.451741794474400	0_4
109 Internal	R 36656	114.868625287693000	-27.449321282499200	0_4
110 Internal	R 36656	114.864357109967000	-27.446900644076600	0_4
111 Internal	R 36656	114.860089114323000	-27.444479880865700	0_4
112 Internal	R 36656	114.855821301070000	-27.442058976667600	0_4
113 Internal	R 36656	114.851553668879000	-27.439637947745900	0_4
114 Internal	R 36656	114.847286230905000	-27.437216793441500	0_4
115 Internal	R 36656	114.843018975306000	-27.434795498270900	0_4
116 Internal	R 36656	114.838751902791000	-27.432374077626700	0_4
117 Internal	R 36656	114.834702842819000	-27.430075840199700	0_4

AGM Survey Boundary Point Coordinates



118	External	STP-EPA-0127	114.834701295873000	-27.415398414311600	0_4
119	External	STP-EPA-0127	114.834699367915000	-27.332063242070300	0_4
120	External	STP-EPA-0127	114.834698114702000	-27.248728585429300	0_4
121	External	STP-EPA-0127	114.834697295284000	-27.165396176024100	0_4
122	External	STP-EPA-0127	114.834696668926000	-27.082061710791500	0_4
123	External	STP-EPA-0127	114.834696074228000	-26.998727197878600	0_4
124	External	STP-EPA-0127	114.834697488387000	-26.915396154823900	0_4
125	External	STP-EPA-0127	114.834698644818000	-26.832063136369300	0_4
126	External	STP-EPA-0127	114.834698725298000	-26.748729891679100	0_4
127	External	STP-EPA-0127	114.834699222600000	-26.665398817239800	0_4
128	External	STP-EPA-0127	114.918031502677000	-26.665397596431700	0_4
129	External	STP-EPA-0127	115.001367109339000	-26.665397418636500	0_4
130	External	STP-EPA-0127	115.084703662241000	-26.665397948817200	0_4
131	External	STP-EPA-0127	115.168035846154000	-26.665396968857800	0_4
132	Internal	STP-EPA-0127	115.196401949628000	-26.665396515225300	0_4
133	Internal	STP-EPA-0127	115.196304061281000	-26.667611800726100	0_4
134	Internal	STP-EPA-0127	115.196105312175000	-26.672109292357500	0_4
135	Internal	STP-EPA-0127	115.195906549428000	-26.676606783991700	0_4
136	Internal	STP-EPA-0127	115.195707773036000	-26.681104275628200	0_4
137	Internal	STP-EPA-0127	115.195508982202000	-26.685601753717300	0_4
138	Internal	STP-EPA-0127	115.195310163420000	-26.690099246068300	0_4
139	Internal	STP-EPA-0127	115.195111330214000	-26.694596723066000	0_4
140	Internal	STP-EPA-0127	115.194912497394000	-26.699094201145800	0_4
141	Internal	STP-EPA-0127	115.194713636837000	-26.703591679047100	0_4
142	Internal	STP-EPA-0127	115.194514762832000	-26.708089142509200	0_4
143	Internal	STP-EPA-0127	115.194315874127000	-26.712586606860500	0_4
144	Internal	STP-EPA-0127	115.194116971751000	-26.717084070308500	0_4
145	Internal	STP-EPA-0127	115.193917510103000	-26.721580947322700	0_4
146	Internal	STP-EPA-0127	115.193718034936000	-26.726077810795600	0_4
147	Internal	STP-EPA-0127	115.193518544812000	-26.730574687787600	0_4
148	Internal	STP-EPA-0127	115.193318064385000	-26.735078717363700	0_4
149	Internal	STP-EPA-0127	115.193117569067000	-26.739582746904700	0_4
150	Internal	STP-EPA-0127	115.192917059632000	-26.744086790862200	0_4
151	Internal	STP-EPA-0127	115.192716536743000	-26.748590806821000	0_4
152	Internal	STP-EPA-0127	115.192515985668000	-26.753094836113500	0_4
153	Internal	STP-EPA-0127	115.192345260265000	-26.756907484096400	0_4
154	Internal	STP-EPA-0127	115.192174534780000	-26.760720118764700	0_4
155	Internal	STP-EPA-0127	115.192003795927000	-26.764532753488200	0_4
156	Internal	STP-EPA-0127	115.191833042712000	-26.768345387351300	0_4
157	Internal	STP-EPA-0127	115.191824702478000	-26.768531591620300	0_4
158	Internal	STP-EPA-0127	115.191707467587000	-26.771149315895900	0_4
159	Internal	STP-EPA-0127	115.191699364478000	-26.771330029758900	0_4
160	Internal	STP-EPA-0127	115.191665431898000	-26.772087809766300	0_4
161	Internal	R 40819	115.191581138004000	-26.773961863409900	0_4
162	Internal	R 40819	115.191982967238000	-26.773976417874400	0_4
163	Internal	R 40819	115.191982358484000	-26.773990151583700	0_4
164	Internal	R 40819	115.191972616719000	-26.773989798881600	0_4
165	Internal	R 40819	115.191570731153000	-26.773975242764300	0_4
166	Internal	R 40819	115.189963264119000	-26.773917001559800	0_4
167	Internal	R 40819	115.189930798385000	-26.774638391150600	0_4

AGM Survey Boundary Point Coordinates



168 Internal	R 40819	115.191538279129000	-26.774696659451300	0_4
169 Internal	R 40819	115.191548068191000	-26.774697013691900	0_4
170 Internal	STP-EPA-0127	115.191405914290000	-26.777856514599900	0_4
171 Internal	STP-EPA-0127	115.191263128813000	-26.781029763445000	0_4
172 Internal	STP-EPA-0127	115.191120342921000	-26.784203012367400	0_4
173 Internal	STP-EPA-0127	115.190927070281000	-26.788495036394000	0_4
174 Internal	STP-EPA-0127	115.190733769730000	-26.792787073158300	0_4
175 Internal	STP-EPA-0127	115.190540455527000	-26.797079111108100	0_4
176 Internal	STP-EPA-0127	115.190347126920000	-26.801371133986400	0_4
177 Internal	STP-EPA-0127	115.190153783660000	-26.805663157134300	0_4
178 Internal	STP-EPA-0127	115.189960427755000	-26.809955180577100	0_4
179 Internal	STP-EPA-0127	115.189872962201000	-26.811898972566300	0_4
180 Internal	STP-EPA-0127	115.189825143924000	-26.816348994692800	0_4
181 Internal	STP-EPA-0127	115.189777311004000	-26.820799016664400	0_4
182 Internal	STP-EPA-0127	115.189729477737000	-26.825249025124500	0_4
183 Internal	STP-EPA-0127	115.189681645702000	-26.829699047171600	0_4
184 Internal	STP-EPA-0127	115.189633798230000	-26.834149055513700	0_4
185 Internal	STP-EPA-0127	115.189585966288000	-26.838599064085900	0_4
186 Internal	STP-EPA-0127	115.189538118692000	-26.843049072488900	0_4
187 Internal	STP-EPA-0127	115.189490272770000	-26.847499066502500	0_4
188 Internal	STP-EPA-0127	115.189442412197000	-26.851949060359200	0_4
189 Internal	STP-EPA-0127	115.189394550826000	-26.856399068677700	0_4
190 Internal	STP-EPA-0127	115.189346690107000	-26.860849063495600	0_4
191 Internal	STP-EPA-0127	115.189298830056000	-26.865299043910200	0_4
192 Internal	STP-EPA-0127	115.189250955132000	-26.869749037702900	0_4
193 Internal	STP-EPA-0127	115.189203094946000	-26.874199018174800	0_4
194 Internal	STP-EPA-0127	115.189155206013000	-26.878648998307300	0_4
195 Internal	STP-EPA-0127	115.189107331602000	-26.883098978654700	0_4
196 Internal	STP-EPA-0127	115.189059442515000	-26.887548959745100	0_4
197 Internal	STP-EPA-0127	115.189011553874000	-26.891998939967000	0_4
198 Internal	STP-EPA-0127	115.188963665895000	-26.896448905783700	0_4
199 Internal	STP-EPA-0127	115.188915776320000	-26.900898872510300	0_4
200 Internal	STP-EPA-0127	115.188867874091000	-26.905348839102100	0_4
201 Internal	STP-EPA-0127	115.188819971300000	-26.909798804811400	0_4
202 Internal	STP-EPA-0127	115.188771538150000	-26.914307235229100	0_4
203 Internal	STP-EPA-0127	115.188723119143000	-26.918815665784500	0_4
204 Internal	STP-EPA-0127	115.188674671782000	-26.923324109471000	0_4
205 Internal	STP-EPA-0127	115.188626237989000	-26.927832526209200	0_4
206 Internal	STP-EPA-0127	115.188577790939000	-26.932340956271700	0_4
207 Internal	STP-EPA-0127	115.188529342929000	-26.936849386276900	0_4
208 Internal	STP-EPA-0127	115.188481426089000	-26.941345383436400	0_4
209 Internal	STP-EPA-0127	115.188433510415000	-26.945841380582000	0_4
210 Internal	STP-EPA-0127	115.188386795057000	-26.950347854231100	0_4
211 Internal	STP-EPA-0127	115.188340065781000	-26.954854328566600	0_4
212 Internal	STP-EPA-0127	115.188293336913000	-26.959360789330700	0_4
213 Internal	STP-EPA-0127	115.188246607231000	-26.963867250046500	0_4
214 Internal	STP-EPA-0127	115.188199864647000	-26.968373710558200	0_4
215 Internal	STP-EPA-0127	115.188153135362000	-26.972880170299800	0_4
216 Internal	STP-EPA-0127	115.188107454401000	-26.977386100119300	0_4
217 Internal	STP-EPA-0127	115.188061772493000	-26.981892043431000	0_4

AGM Survey Boundary Point Coordinates



218	Internal	STP-EPA-0127	115.188017530325000	-26.986351537885700	0_4
219	Internal	STP-EPA-0127	115.187973287602000	-26.990811044994200	0_4
220	Internal	STP-EPA-0127	115.187929044730000	-26.995270539488800	0_4
221	Internal	STP-EPA-0127	115.187884788424000	-26.999730032932000	0_4
222	Internal	STP-EPA-0127	115.187840532771000	-27.004189526407500	0_4
223	Internal	STP-EPA-0127	115.187796275742000	-27.008649020791400	0_4
224	Internal	STP-EPA-0127	115.187752019597000	-27.013108500768500	0_4
225	Internal	STP-EPA-0127	115.187707748775000	-27.017567994118600	0_4
226	Internal	STP-EPA-0127	115.187663478820000	-27.022027473963700	0_4
227	Internal	STP-EPA-0127	115.187619208509000	-27.026486953826800	0_4
228	Internal	STP-EPA-0127	115.187574938073000	-27.030946419269000	0_4
229	Internal	STP-EPA-0127	115.187530652924000	-27.035405899887800	0_4
230	Internal	STP-EPA-0127	115.187486368671000	-27.039865365195800	0_4
231	Internal	STP-EPA-0127	115.187442084043000	-27.044324831423000	0_4
232	Internal	STP-EPA-0127	115.187397800078000	-27.048784296777300	0_4
233	Internal	STP-EPA-0127	115.187353501628000	-27.053243762868600	0_4
234	Internal	STP-EPA-0127	115.187309203048000	-27.057703214537400	0_4
235	Internal	STP-EPA-0127	115.187712142036000	-27.057706509361700	0_4
237	Internal	STP-EPA-0127	115.187712014331000	-27.057719971585000	0_4
238	Internal	STP-EPA-0127	115.187702043256000	-27.057719889126400	0_4
239	Internal	STP-EPA-0127	115.187298774589000	-27.057716592729800	0_4
240	Internal	STP-EPA-0127	115.182662339125000	-27.057678594265400	0_4
241	Internal	STP-EPA-0127	115.182653719683000	-27.058535056790500	0_4
242	Internal	STP-EPA-0127	115.182650534158000	-27.058851710675700	0_4
243	Internal	STP-EPA-0127	115.187287012396000	-27.058889737122700	0_4
244	Internal	STP-EPA-0127	115.187297306139000	-27.058889821968400	0_4
245	Internal	STP-EPA-0127	115.187253379574000	-27.063278996168700	0_4
246	Internal	STP-EPA-0127	115.187209319392000	-27.067681619060000	0_4
247	Internal	STP-EPA-0127	115.187165243848000	-27.072084255378700	0_4
248	Internal	STP-EPA-0127	115.187121183619000	-27.076486878442700	0_4
249	Internal	STP-EPA-0127	115.187077109035000	-27.080889514946600	0_4
250	Internal	STP-EPA-0127	115.187033019520000	-27.085292137805100	0_4
251	Internal	STP-EPA-0127	115.186988945335000	-27.089694746505700	0_4
252	Internal	STP-EPA-0127	115.186944855781000	-27.094097368632300	0_4
253	Internal	STP-EPA-0127	115.186900767194000	-27.098499991759200	0_4
254	Internal	STP-EPA-0127	115.186856678827000	-27.102902599630000	0_4
255	Internal	STP-EPA-0127	115.186812589408000	-27.107305208474500	0_4
256	Internal	STP-EPA-0127	115.186768486851000	-27.111707817234000	0_4
257	Internal	STP-EPA-0127	115.186724384497000	-27.116110411639000	0_4
258	Internal	STP-EPA-0127	115.186680280872000	-27.120513020552900	0_4
259	Internal	STP-EPA-0127	115.186636164338000	-27.124915614942500	0_4
260	Internal	STP-EPA-0127	115.186592061891000	-27.129318209597500	0_4
261	Internal	STP-EPA-0127	115.186547945293000	-27.133720804153000	0_4
262	Internal	STP-EPA-0127	115.186503814759000	-27.138123385072800	0_4
263	Internal	STP-EPA-0127	115.186462533862000	-27.142280865224300	0_4
264	Internal	STP-EPA-0127	115.186421238362000	-27.146438344652500	0_4
265	Internal	STP-EPA-0127	115.186379943593000	-27.150595810919100	0_4
266	Internal	STP-EPA-0127	115.186340926165000	-27.154635580663000	0_4
267	Internal	STP-EPA-0127	115.186301922369000	-27.158675336643300	0_4
268	Internal	STP-EPA-0127	115.186262904733000	-27.162715092946000	0_4

AGM Survey Boundary Point Coordinates



269	Internal	STP-EPA-0127	115.186223886386000	-27.166754848838100	0_4
270	Internal	STP-EPA-0127	115.186184869331000	-27.170794605247800	0_4
271	Internal	STP-EPA-0127	115.186145850789000	-27.174834346795300	0_4
272	Internal	STP-EPA-0127	115.186114335202000	-27.178168319329100	0_4
273	Internal	STP-EPA-0127	115.186082819470000	-27.181502304800500	0_4
274	Internal	STP-EPA-0127	115.186051303021000	-27.184836276124900	0_4
275	Internal	STP-EPA-0127	115.186009477751000	-27.189336506346600	0_4
276	Internal	STP-EPA-0127	115.185967637946000	-27.193836736353800	0_4
277	Internal	STP-EPA-0127	115.185926943497000	-27.198279787182000	0_4
278	Internal	STP-EPA-0127	115.185886250048000	-27.202722838969900	0_4
279	Internal	STP-EPA-0127	115.185845555374000	-27.207165904324600	0_4
280	Internal	STP-EPA-0127	115.185804861157000	-27.211608941749300	0_4
281	Internal	STP-EPA-0127	115.185764153603000	-27.216051992583300	0_4
282	Internal	STP-EPA-0127	115.185723445028000	-27.220495044349800	0_4
283	Internal	STP-EPA-0127	115.185682736688000	-27.224938081721300	0_4
284	Internal	STP-EPA-0127	115.185641902738000	-27.229442544282900	0_4
285	Internal	STP-EPA-0127	115.185601055308000	-27.233947006639500	0_4
286	Internal	STP-EPA-0127	115.185560221874000	-27.238451455608600	0_4
287	Internal	STP-EPA-0127	115.185519373950000	-27.242955904359200	0_4
288	Internal	STP-EPA-0127	115.185478525668000	-27.247460353074100	0_4
289	Internal	STP-EPA-0127	115.185437663903000	-27.251964801582900	0_4
290	Internal	STP-EPA-0127	115.185396815913000	-27.256469250238700	0_4
291	Internal	STP-EPA-0127	115.185355954658000	-27.260973685152300	0_4
292	Internal	STP-EPA-0127	115.185315092809000	-27.265478134467100	0_4
293	Internal	STP-EPA-0127	115.185274230833000	-27.269982569306900	0_4
294	Internal	STP-EPA-0127	115.185233355368000	-27.274487003939100	0_4
295	Internal	STP-EPA-0127	115.185193415285000	-27.278980290530900	0_4
296	Internal	STP-EPA-0127	115.185153461614000	-27.283473591370700	0_4
297	Internal	STP-EPA-0127	115.185151533517000	-27.283693113743000	0_4
298	Internal	STP-EPA-0127	115.18555196665000	-27.283697635954900	0_4
300	Internal	STP-EPA-0127	115.185516155875000	-27.288158778402800	0_4
301	Internal	STP-EPA-0127	115.185478170609000	-27.292620803735900	0_4
302	Internal	STP-EPA-0127	115.185439191016000	-27.297081730412600	0_4
303	Internal	STP-EPA-0127	115.185400178769000	-27.301543735244200	0_4
304	Internal	STP-EPA-0127	115.185361156506000	-27.306005736357400	0_4
305	Internal	STP-EPA-0127	115.185322168714000	-27.310500763351300	0_4
306	Internal	STP-EPA-0127	115.185283164704000	-27.314995783799300	0_4
307	Internal	STP-EPA-0127	115.185244156481000	-27.319490805077300	0_4
308	Internal	STP-EPA-0127	115.185205133983000	-27.323985824346900	0_4
309	Internal	STP-EPA-0127	115.185166096229000	-27.328480839789800	0_4
310	Internal	STP-EPA-0127	115.185134177325000	-27.332288788116800	0_4
311	Internal	STP-EPA-0127	115.185102180135000	-27.336096821923300	0_4
312	Internal	STP-EPA-0127	115.185070274280000	-27.339903772803000	0_4
313	Internal	STP-EPA-0127	115.185037255368000	-27.343711789422500	0_4
314	Internal	STP-EPA-0127	115.185037185172000	-27.343725273534200	0_4
315	Internal	STP-EPA-0127	115.185027161092000	-27.343725204619100	0_4
316	Internal	STP-EPA-0127	115.184996845311000	-27.343724995606500	0_4
317	Internal	STP-EPA-0127	115.184995323420000	-27.343905486148300	0_4
318	Internal	STP-EPA-0127	115.185025637229000	-27.343905695137300	0_4
319	Internal	STP-EPA-0127	115.185036205045000	-27.343905766607600	0_4

AGM Survey Boundary Point Coordinates



320 Internal	STP-EPA-0127	115.185008324841000	-27.347185801366600	0_4
321 Internal	STP-EPA-0127	115.185008210284000	-27.347199462698000	0_4
322 Internal	STP-EPA-0127	115.184997865512000	-27.347199392308600	0_4
323 Internal	STP-EPA-0127	115.184593634432000	-27.347196625488200	0_4
324 Internal	STP-EPA-0127	115.179945142334000	-27.347164690291900	0_4
325 Internal	STP-EPA-0127	115.179931927233000	-27.348721587683500	0_4
326 Internal	STP-EPA-0127	115.179316345561000	-27.349255207823600	0_4
327 Internal	STP-EPA-0127	115.176028110247000	-27.348362897584800	0_4
328 Internal	STP-EPA-0127	115.172739945044000	-27.347470517934200	0_4
329 Internal	STP-EPA-0127	115.169451822897000	-27.346578054988700	0_4
330 Internal	STP-EPA-0127	115.169187415024000	-27.347355126893000	0_4
331 Internal	STP-EPA-0127	115.172812825981000	-27.348339134920900	0_4
332 Internal	STP-EPA-0127	115.176438293302000	-27.349323044393700	0_4
333 Internal	STP-EPA-0127	115.180063844006000	-27.350306870996000	0_4
334 Internal	STP-EPA-0127	115.180664044047000	-27.350281110514000	0_4
335 Internal	STP-EPA-0127	115.180869652118000	-27.349676719364500	0_4
336 Internal	STP-EPA-0127	115.179925988500000	-27.349420665748400	0_4
337 Internal	STP-EPA-0127	115.184574579092000	-27.349452588182600	0_4
338 Internal	STP-EPA-0127	115.184978810069000	-27.349455367985300	0_4
339 Internal	STP-EPA-0127	115.184989203557000	-27.349455439016800	0_4
340 Internal	STP-EPA-0127	115.184983368255000	-27.350174838841100	0_4
341 Internal	STP-EPA-0127	115.184981336155000	-27.350355827121900	0_4
342 Internal	STP-EPA-0127	115.184981321947000	-27.350361781967700	0_4
343 Internal	STP-EPA-0127	115.184950398129000	-27.352734786849800	0_4
344 Internal	STP-EPA-0127	115.184950250280000	-27.352747945017400	0_4
345 Internal	STP-EPA-0127	115.184939819726000	-27.352747834680400	0_4
346 Internal	STP-EPA-0127	115.184909506345000	-27.352747513675900	0_4
347 Internal	STP-EPA-0127	115.184907131421000	-27.352927990199100	0_4
348 Internal	STP-EPA-0127	115.184937445862000	-27.352928311219600	0_4
349 Internal	STP-EPA-0127	115.184948199846000	-27.352928423957300	0_4
350 Internal	STP-EPA-0127	115.184889419679000	-27.357349778782500	0_4
351 Internal	STP-EPA-0127	115.184831441497000	-27.361783795069700	0_4
352 Internal	STP-EPA-0127	115.184772408841000	-27.366218788624500	0_4
353 Internal	STP-EPA-0127	115.184714377487000	-27.370652799672600	0_4
354 Internal	STP-EPA-0127	115.184656395348000	-27.375087801439400	0_4
355 Internal	STP-EPA-0127	115.184597334460000	-27.379521790934200	0_4
356 Internal	STP-EPA-0127	115.184539325488000	-27.383956783289000	0_4
357 Internal	STP-EPA-0127	115.184480314987000	-27.388390859140900	0_4
358 Internal	STP-EPA-0127	115.184422375229000	-27.392824852337700	0_4
359 Internal	STP-EPA-0127	115.184363322000000	-27.397259824722600	0_4
360 Internal	STP-EPA-0127	115.184305352290000	-27.401693813881500	0_4
361 Internal	STP-EPA-0127	115.184247349922000	-27.406128790882900	0_4
362 Internal	STP-EPA-0127	115.184188348898000	-27.410562849606100	0_4
363 Internal	STP-EPA-0127	115.184130317570000	-27.414997822579600	0_4
364 Internal	STP-EPA-0127	115.184071285967000	-27.419431786093700	0_4
365 Internal	STP-EPA-0127	115.184013306146000	-27.423866843633100	0_4
366 Internal	STP-EPA-0127	115.183954330460000	-27.428300803318700	0_4
367 Internal	STP-EPA-0127	115.183896319680000	-27.432735854997000	0_4
368 Internal	STP-EPA-0127	115.183837309953000	-27.437169806973300	0_4
369 Internal	STP-EPA-0127	115.183779286980000	-27.441603768180900	0_4

AGM Survey Boundary Point Coordinates



370 Internal	STP-EPA-0127	115.183720314442000	-27.446038798228400	0_4
371 Internal	STP-EPA-0127	115.183662258524000	-27.450472750840400	0_4
372 Internal	STP-EPA-0127	115.183603251898000	-27.454907774979700	0_4
373 Internal	STP-EPA-0127	115.183545249444000	-27.459341816693500	0_4
374 Internal	STP-EPA-0127	115.183486297198000	-27.463776745823800	0_4
375 Internal	STP-EPA-0127	115.183428251616000	-27.468210782417300	0_4
376 Internal	STP-EPA-0127	115.183369258721000	-27.472645796708100	0_4
377 Internal	STP-EPA-0127	115.183311181096000	-27.477079830129500	0_4
378 Internal	STP-EPA-0127	115.183252175897000	-27.481513756653500	0_4
379 Internal	STP-EPA-0127	115.183194227066000	-27.485948777277600	0_4
380 Internal	STP-EPA-0127	115.183135192370000	-27.490382787301300	0_4
381 Internal	STP-EPA-0127	115.183077210552000	-27.494817800225500	0_4
382 Internal	STP-EPA-0127	115.183018176162000	-27.499251803883400	0_4
383 Internal	STP-EPA-0127	115.182960210010000	-27.503685818761600	0_4
384 Internal	STP-EPA-0127	115.182901213223000	-27.508120811130800	0_4
385 Internal	STP-EPA-0127	115.182864219234000	-27.510910746395500	0_4
386 Internal	STP-EPA-0127	115.182811251747000	-27.514844735094500	0_4
387 Internal	STP-EPA-0127	115.182758272964000	-27.518778722393100	0_4
388 Internal	STP-EPA-0127	115.182706283873000	-27.522712721375400	0_4
389 Internal	STP-EPA-0127	115.182193327600000	-27.526513730597400	0_4
390 Internal	STP-EPA-0127	115.181681328128000	-27.530314752740700	0_4
391 Internal	STP-EPA-0127	115.181168298816000	-27.534114761820300	0_4
392 Internal	STP-EPA-0127	115.180655380018000	-27.537915761922300	0_4
393 Internal	STP-EPA-0127	115.180173380609000	-27.541489772010200	0_4
394 Internal	STP-EPA-0127	115.179932353361000	-27.543267750666600	0_4
395 Internal	STP-EPA-0127	115.179927354476000	-27.543312712259000	0_4
396 Internal	STP-EPA-0127	115.179744376238000	-27.547763737285200	0_4
397 Internal	STP-EPA-0127	115.179562442245000	-27.552215765447300	0_4
398 Internal	STP-EPA-0127	115.179380484789000	-27.556666800813200	0_4
399 Internal	STP-EPA-0127	115.179197481589000	-27.561117731605400	0_4
400 Internal	STP-EPA-0127	115.179015452539000	-27.565568764804200	0_4
401 Internal	STP-EPA-0127	115.178833481944000	-27.570019793643600	0_4
402 Internal	STP-EPA-0127	115.178650479183000	-27.574470807428200	0_4
403 Internal	STP-EPA-0127	115.178468451218000	-27.578921829772600	0_4
404 Internal	STP-EPA-0127	115.178286482125000	-27.583372761120900	0_4
405 Internal	STP-EPA-0127	115.178103486391000	-27.587823764120200	0_4
406 Internal	STP-EPA-0127	115.177921466574000	-27.592274775701500	0_4
407 Internal	STP-EPA-0127	115.177739504168000	-27.596725784714600	0_4
408 Internal	STP-EPA-0127	115.177556425812000	-27.601176866904100	0_4
409 Internal	STP-EPA-0127	115.177374495089000	-27.605627872393900	0_4
410 Internal	STP-EPA-0127	115.177191434485000	-27.610079847973800	0_4
411 Internal	STP-EPA-0127	115.177009451421000	-27.614530845225200	0_4
412 Internal	STP-EPA-0127	115.176826441898000	-27.618981822954200	0_4
413 Internal	STP-EPA-0127	115.176644408504000	-27.623432811992900	0_4
414 Internal	STP-EPA-0127	115.176461431134000	-27.627883873741800	0_4
415 Internal	R 48435	115.176279430450000	-27.632334856561200	0_4
0 Internal	R 1805	115.090692211021000	-27.510497006550900	0_5
1 Internal	R 1805	115.090694851222000	-27.507472817013700	0_5
2 Internal	R 1805	115.086623370363000	-27.507469812602900	0_5
3 Internal	R 1805	115.082551887347000	-27.507466683394800	0_5

AGM Survey Boundary Point Coordinates



4 Internal	R 1805	115.078480405792000	-27.507463455611100	0_5
5 Internal	R 1805	115.074408923392000	-27.507460088607100	0_5
6 Internal	R 1805	115.074405779969000	-27.510568978196300	0_5
7 Internal	R 1805	115.074402650936000	-27.513677868550200	0_5
8 Internal	R 1805	115.074399506964000	-27.516786758360000	0_5
9 Internal	R 1805	115.074396894226000	-27.519384952153600	0_5
10 Internal	R 1805	115.074394268522000	-27.521983133169200	0_5
11 Internal	R 1805	115.078466239040000	-27.521986499362700	0_5
12 Internal	R 1805	115.082538224655000	-27.521989740924800	0_5
13 Internal	R 1805	115.086610194980000	-27.521992857436800	0_5
14 Internal	R 1805	115.090682180162000	-27.521995860144300	0_5
15 Internal	R 1805	115.090684555226000	-27.519270638294000	0_5
16 Internal	R 1805	115.090686944077000	-27.516545416581500	0_5
17 Internal	R 1805	115.090689585342000	-27.513521211358000	0_5
0 Internal	R 38890	115.144560252316000	-27.916465121860200	0_6
1 Internal	R 38890	115.144553137271000	-27.916464655087100	0_6
2 Internal	R 38890	115.144365843984000	-27.918714330231600	0_6
3 Internal	R 38890	115.146026983282000	-27.918823448946200	0_6
4 Internal	R 48435	115.145710077996000	-27.922629544471600	0_6
5 Internal	R 48435	115.145393157789000	-27.926435627387100	0_6
6 Internal	R 48435	115.145076223225000	-27.930241723871600	0_6
7 Internal	R 48435	115.144759261552000	-27.934047806678800	0_6
8 Internal	R 48435	115.145169374690000	-27.934015186408200	0_6
9 Internal	R 48435	115.145161774010000	-27.934106437542600	0_6
10 Internal	R 48435	115.145154174976000	-27.934197591230400	0_6
11 Internal	R 48435	115.144743937187000	-27.934230210653300	0_6
12 Internal	R 48435	115.144409148816000	-27.938249235682300	0_6
13 Internal	R 48435	115.144394075655000	-27.938430284645600	0_6
14 Internal	R 48435	115.144044270741000	-27.942629339097200	0_6
15 Internal	R 48435	115.143694436953000	-27.946828392647800	0_6
16 Internal	R 48435	115.143344577315000	-27.951027446240000	0_6
17 Internal	R 48435	115.142509571542000	-27.955314594512700	0_6
18 Internal	R 48435	115.141674510090000	-27.959601728672300	0_6
19 Internal	R 48435	115.140839378479000	-27.963888862057900	0_6
20 Internal	R 48435	115.140004176905000	-27.968175982035100	0_6
21 Internal	R 48435	115.139168919589000	-27.972463087891100	0_6
22 Internal	R 48435	115.138333593051000	-27.976750193880700	0_6
23 Internal	R 48435	115.137498196255000	-27.981037299987300	0_6
24 Internal	R 48435	115.136662729425000	-27.985324391771900	0_6
25 Internal	R 48435	115.135827206754000	-27.989611470326800	0_6
26 Internal	R 48435	115.134991614792000	-27.993898548101800	0_6
27 Internal	R 48435	115.134155951717000	-27.998185611532600	0_6
28 Internal	R 48435	115.134044083317000	-27.998759490877900	0_6
29 External	STP-EPA-0127	115.084746186566000	-27.998754030874200	0_6
30 External	STP-EPA-0127	115.001415224984000	-27.998754994888200	0_6
31 External	STP-EPA-0127	114.918082895568000	-27.9987555878771600	0_6
32 External	STP-EPA-0127	114.834750456478000	-27.998756650426900	0_6
33 External	STP-EPA-0127	114.834750920840000	-27.915422715168300	0_6
34 External	STP-EPA-0127	114.834743884640000	-27.832084539240400	0_6
35 External	STP-EPA-0127	114.834734969336000	-27.748745800906500	0_6

AGM Survey Boundary Point Coordinates



36	External	STP-EPA-0127	114.834726904017000	-27.665410516203100	0_6
37	External	STP-EPA-0127	114.834718404715000	-27.582072967231000	0_6
38	External	STP-EPA-0127	114.834708203859000	-27.498733970723700	0_6
39	Internal	R 36656	114.834702864254000	-27.430289758069600	0_6
40	Internal	R 36656	114.838643342932000	-27.432526363632500	0_6
41	Internal	R 36656	114.842910416504000	-27.434947784116400	0_6
42	Internal	R 36656	114.847177671887000	-27.437369092643600	0_6
43	Internal	R 36656	114.851445122026000	-27.439790247861500	0_6
44	Internal	R 36656	114.855712755001000	-27.442211291057300	0_6
45	Internal	R 36656	114.859980569335000	-27.444632194192500	0_6
46	Internal	R 36656	114.864248564021000	-27.447052957211700	0_6
47	Internal	R 36656	114.868516755962000	-27.449473595674700	0_6
48	Internal	R 36656	114.872785142163000	-27.451894107689600	0_6
49	Internal	R 36656	114.877053696581000	-27.454314480183700	0_6
50	Internal	R 36656	114.881322446265000	-27.456734727066300	0_6
51	Internal	R 36656	114.885565143054000	-27.459139146917300	0_6
52	Internal	R 36656	114.889808020622000	-27.461543439667100	0_6
53	Internal	R 36656	114.894051079197000	-27.463947593548000	0_6
54	Internal	R 36656	114.898294334727000	-27.466351621395400	0_6
55	Internal	R 36656	114.902537771019000	-27.468755523826800	0_6
56	Internal	R 36656	114.902661208831000	-27.468825484409500	0_6
57	Internal	R 36656	114.902761470438000	-27.468882313406200	0_6
58	Internal	R 36656	114.907012870934000	-27.471292027170800	0_6
59	Internal	R 36656	114.911264450717000	-27.473701629408800	0_6
60	Internal	R 36656	114.915516214639000	-27.476111077738300	0_6
61	Internal	R 36656	114.919768171028000	-27.478520413756500	0_6
62	Internal	R 36656	114.924020312306000	-27.480929610235900	0_6
63	Internal	R 36656	114.927955685111000	-27.483158497682000	0_6
64	Internal	R 36656	114.931891226325000	-27.485387274709200	0_6
65	Internal	R 36656	114.935826921840000	-27.487615938368300	0_6
66	Internal	R 36656	114.939762769587000	-27.489844491304600	0_6
67	Internal	R 36656	114.943698786785000	-27.492072932838900	0_6
68	Internal	R 36656	114.947634956257000	-27.494301261782600	0_6
69	Internal	R 36656	114.951571294177000	-27.496529479245200	0_6
70	Internal	R 36656	114.955507785375000	-27.498757584971000	0_6
71	Internal	R 36656	114.958190707909000	-27.500276205119800	0_6
72	Internal	R 36656	114.961039073263000	-27.501888240326900	0_6
73	Internal	R 36656	114.963887538283000	-27.503500219731400	0_6
74	Internal	R 36656	114.966736071836000	-27.505112130230600	0_6
75	Internal	R 36656	114.970825029898000	-27.507425996548300	0_6
76	Internal	R 36656	114.974914169409000	-27.509739736734000	0_6
77	Internal	R 36656	114.979003478196000	-27.512053352379200	0_6
78	Internal	R 36656	114.983092952004000	-27.514366855118800	0_6
79	Internal	R 36656	114.987182609266000	-27.516680233452600	0_6
80	Internal	R 36656	114.991272418649000	-27.518993485086300	0_6
81	Internal	R 1804	114.995362411265000	-27.521306624874000	0_6
82	Internal	R 1804	114.995362983669000	-27.525170934301400	0_6
83	Internal	R 1804	114.995363570301000	-27.529035242952900	0_6
84	Internal	R 1804	114.995364059418000	-27.532350439106800	0_6
85	Internal	R 1804	114.995364546914000	-27.535665635655800	0_6

AGM Survey Boundary Point Coordinates



86 Internal	R 1804	114.999421306089000	-27.535693757257800	0_6
87 Internal	R 1804	115.003478049330000	-27.535721738451400	0_6
88 Internal	R 1804	115.007534806211000	-27.535749622078400	0_6
89 Internal	R 1804	115.011591565049000	-27.535777380896700	0_6
90 Internal	R 1804	115.011591202457000	-27.535672299411900	0_6
91 Internal	R 1804	115.011659388321000	-27.533541243154200	0_6
92 Internal	R 36656	115.012631116028000	-27.534727896709000	0_6
93 Internal	R 36656	115.015540545101000	-27.535320498450100	0_6
94 Internal	R 36656	115.018450001378000	-27.535913028102400	0_6
95 Internal	R 36656	115.022040376344000	-27.538773227505300	0_6
96 Internal	R 36656	115.025630946751000	-27.541633342880700	0_6
97 Internal	R 36656	115.029221684538000	-27.544493359355900	0_6
98 Internal	R 36656	115.032812618023000	-27.547353280006200	0_6
99 Internal	R 36656	115.036403747294000	-27.550213101187700	0_6
100 Internal	R 36656	115.03995042713000	-27.553072839594500	0_6
101 Internal	R 36656	115.043586534962000	-27.555932479380900	0_6
102 Internal	R 36656	115.047178223036000	-27.558792021400200	0_6
103 Internal	R 36656	115.050770077584000	-27.561651466107800	0_6
104 Internal	R 36656	115.054362128762000	-27.564510827430400	0_6
105 Internal	R 36656	115.057551679827000	-27.567340963440100	0_6
106 Internal	R 36656	115.060741386699000	-27.570171028879700	0_6
107 Internal	R 36656	115.063931273686000	-27.573001024964100	0_6
108 Internal	R 36656	115.067121299551000	-27.575830936651400	0_6
109 Internal	R 36656	115.070311508600000	-27.578660779874400	0_6
110 Internal	R 36656	115.073501869752000	-27.581490537928600	0_6
111 Internal	R 36656	115.076692399708000	-27.584320241703900	0_6
112 Internal	R 36656	115.079883097002000	-27.587149860468000	0_6
113 Internal	R 36656	115.083073948478000	-27.589979394914500	0_6
114 Internal	R 36656	115.086337777592000	-27.592873386504100	0_6
115 Internal	R 36656	115.089601788443000	-27.595767308992400	0_6
116 Internal	R 36656	115.092865968144000	-27.598661147732800	0_6
117 Internal	R 36656	115.096130314459000	-27.601554916203200	0_6
118 Internal	R 36656	115.099394828660000	-27.604448600855200	0_6
119 Internal	R 36656	115.102659523938000	-27.607342201840400	0_6
120 Internal	R 36656	115.105924386935000	-27.610235731582000	0_6
121 Internal	R 36656	115.109189417861000	-27.613129179224100	0_6
122 Internal	R 36656	115.112454615775000	-27.616022542017900	0_6
123 Internal	R 36656	115.115719996630000	-27.618915836396300	0_6
124 Internal	R 36656	115.118985544292000	-27.621809059403600	0_6
125 Internal	R 36656	115.121959164694000	-27.624443757863400	0_6
126 Internal	R 36656	115.124932937975000	-27.627078386161800	0_6
127 Internal	R 36656	115.127906850999000	-27.629712943196400	0_6
128 Internal	R 36656	115.130880904522000	-27.632347445200900	0_6
129 Internal	R 36656	115.134314061774000	-27.635387925426200	0_6
130 Internal	R 36656	115.137747415451000	-27.638428308023300	0_6
131 Internal	R 36656	115.141180950398000	-27.641468591852200	0_6
132 Internal	R 36656	115.144614681355000	-27.644508805957600	0_6
133 Internal	R 36656	115.148048594394000	-27.647548936581700	0_6
134 Internal	R 36656	115.151482700949000	-27.650588968501600	0_6
135 Internal	R 36656	115.154917004828000	-27.653628917979100	0_6

AGM Survey Boundary Point Coordinates



136 Internal	R 36656	115.158144177404000	-27.656485568642300	0_6
137 Internal	R 36656	115.161371517956000	-27.659342149351200	0_6
138 Internal	R 36656	115.164599025721000	-27.662198646530200	0_6
139 Internal	R 36656	115.167826700738000	-27.665055059249300	0_6
140 Internal	R 36656	115.171054543788000	-27.667911402833900	0_6
141 Internal	R 48435	115.174282554927000	-27.670767675451700	0_6
142 Internal	R 48435	115.174186372663000	-27.673105583421400	0_6
143 Internal	R 48435	115.174591973330000	-27.673109663526200	0_6
144 Internal	R 48435	115.174584541546000	-27.673290097410900	0_6
145 Internal	R 48435	115.174178953923000	-27.673286046313400	0_6
146 Internal	R 48435	115.173996019063000	-27.677732841932100	0_6
147 Internal	R 48435	115.173813082968000	-27.682179622476800	0_6
148 Internal	R 48435	115.173630134215000	-27.686626404041700	0_6
149 Internal	R 48435	115.173447156595000	-27.691073185510300	0_6
150 Internal	R 48435	115.173264179516000	-27.695519966367600	0_6
151 Internal	R 48435	115.173081174799000	-27.699966733606600	0_6
152 Internal	R 48435	115.172898155377000	-27.704413501837500	0_6
153 Internal	R 48435	115.172715122305000	-27.708860268366600	0_6
154 Internal	R 48435	115.172532088728000	-27.713307035172100	0_6
155 Internal	R 48435	115.172349027494000	-27.717753788357700	0_6
156 Internal	R 48435	115.171488038315000	-27.722037751669200	0_6
157 Internal	R 48435	115.170626964652000	-27.726321714599500	0_6
158 Internal	R 48435	115.169765849311000	-27.730605663271900	0_6
159 Internal	R 48435	115.168904650682000	-27.734889598035900	0_6
160 Internal	R 48435	115.168043381926000	-27.739173519063000	0_6
161 Internal	R 48435	115.167182056779000	-27.743457452704800	0_6
162 Internal	R 48435	115.166320662688000	-27.747741359985100	0_6
163 Internal	R 48435	115.165459198177000	-27.752025267054000	0_6
164 Internal	R 48435	115.164597663466000	-27.756309159471700	0_6
165 Internal	R 48435	115.163736059291000	-27.760593052587700	0_6
166 Internal	R 48435	115.162874399074000	-27.764876931235400	0_6
167 Internal	R 48435	115.162012669348000	-27.769160810575500	0_6
168 Internal	R 48435	115.161150869337000	-27.773444675252700	0_6
169 Internal	R 48435	115.160288999773000	-27.777728540616300	0_6
170 Internal	R 48435	115.159427059880000	-27.782012391310900	0_6
171 Internal	R 48435	115.158565050634000	-27.786296228249400	0_6
172 Internal	R 48435	115.157702985989000	-27.790580065152400	0_6
173 Internal	R 48435	115.156840836729000	-27.794863888090300	0_6
174 Internal	R 48435	115.155978633042000	-27.799147711000600	0_6
175 Internal	R 48435	115.155617371097000	-27.803496870864000	0_6
176 Internal	R 48435	115.155256069751000	-27.807846031209800	0_6
177 Internal	R 48435	115.154894739400000	-27.812195176833900	0_6
178 Internal	R 48435	115.154533380777000	-27.816544323990300	0_6
179 Internal	R 48435	115.154172009141000	-27.820893470175200	0_6
180 Internal	R 48435	115.153810594021000	-27.825242615882900	0_6
181 Internal	R 48435	115.153449152661000	-27.829591761343400	0_6
182 Internal	R 48435	115.153087682221000	-27.833940893883500	0_6
183 Internal	R 48435	115.152726185538000	-27.838290025272800	0_6
184 Internal	R 48435	115.152364658512000	-27.842639157261000	0_6
185 Internal	R 48435	115.152003091228000	-27.846988275274800	0_6

AGM Survey Boundary Point Coordinates



186 Internal	R 48435	115.151641508824000	-27.851337393187700	0_6
187 Internal	R 48435	115.151279900110000	-27.855686511751800	0_6
188 Internal	R 48435	115.150918248848000	-27.860035629846300	0_6
189 Internal	R 48435	115.150556582671000	-27.864384734303800	0_6
190 Internal	R 48435	115.150194875958000	-27.868733838317600	0_6
191 Internal	R 48435	115.149833154081000	-27.873082942227400	0_6
192 Internal	R 48435	115.149471390618000	-27.877432046580600	0_6
193 Internal	R 48435	115.149109600036000	-27.881781136228500	0_6
194 Internal	R 48435	115.148747794264000	-27.886130225770600	0_6
195 Internal	R 48435	115.148385946846000	-27.890479317558400	0_6
196 Internal	R 48435	115.148024073081000	-27.894828407284500	0_6
197 Internal	R 48435	115.147662169099000	-27.899177483164000	0_6
198 Internal	R 48435	115.147300237704000	-27.903526558771300	0_6
199 Internal	R 48435	115.146938265671000	-27.907875634830400	0_6
200 Internal	R 48435	115.146576278610000	-27.912224698148100	0_6
201 Internal	R 38890	115.146215513970000	-27.916558741002000	0_6
202 Internal	R 38890	115.144561487500000	-27.916450260330800	0_6
0 Internal	R 1803	114.930394906294000	-27.637649909831800	0_7
1 Internal	R 1803	114.930395212789000	-27.634043526829200	0_7
2 Internal	R 1803	114.926110677612000	-27.633981136079500	0_7
3 Internal	R 1803	114.921826127453000	-27.633918592819300	0_7
4 Internal	R 1803	114.921925703963000	-27.634231894523400	0_7
5 Internal	R 1803	114.921770359745000	-27.635653549022200	0_7
6 Internal	R 1803	114.921601910833000	-27.636341228967100	0_7
7 Internal	R 1803	114.920749261775000	-27.638139231241600	0_7
8 Internal	R 1803	114.919268123819000	-27.639581238389500	0_7
9 Internal	R 1803	114.917619277413000	-27.640989496947900	0_7
10 Internal	R 1803	114.916394206032000	-27.641882560907000	0_7
11 Internal	R 1803	114.913818627987000	-27.643473026849800	0_7
12 Internal	R 1803	114.912181571853000	-27.644893576905700	0_7
13 Internal	R 1803	114.910428007727000	-27.646896949893400	0_7
14 Internal	R 1803	114.909439613226000	-27.648441566965600	0_7
15 Internal	R 1803	114.913630496087000	-27.648447322037100	0_7
16 Internal	R 1803	114.917821378278000	-27.648452938445800	0_7
17 Internal	R 1803	114.922012246091000	-27.648458443059700	0_7
18 Internal	R 1803	114.926203128393000	-27.648463808337400	0_7
19 Internal	R 1803	114.930394011494000	-27.648469060244300	0_7
20 Internal	R 1803	114.930394304109000	-27.644862677418900	0_7
21 Internal	R 1803	114.930394612861000	-27.641256293202100	0_7
0 Internal	R 13170	115.015880832857000	-27.962025739229000	0_8
1 Internal	R 13170	115.015880163027000	-27.960725720411900	0_8
2 Internal	R 13170	115.013625206139000	-27.960211965096400	0_8
3 Internal	R 13170	115.013626380872000	-27.962026898965400	0_8
0 Internal	R 13028	115.005756481296000	-27.998343240029100	0_9
1 Internal	R 13028	115.009739296806000	-27.998344777551400	0_9
2 Internal	R 13028	115.013722098569000	-27.998346202005500	0_9
3 Internal	R 13028	115.013723579603000	-27.994716879693000	0_9
4 Internal	R 13028	115.013725059939000	-27.991087543949200	0_9
5 Internal	R 13028	115.010290031193000	-27.991086412466900	0_9
6 Internal	R 13028	115.010249127261000	-27.991086398893200	0_9

AGM Survey Boundary Point Coordinates



7 Internal	R 13028	115.010064431716000	-27.991086342560000	0_9
8 Internal	R 13028	115.008909726895000	-27.992978598695600	0_9
9 Internal	R 13028	115.006718695502000	-27.996568902909800	0_9
10 Internal	R 13028	115.005656150192000	-27.998343198389900	0_9
0 Internal	R 13028	115.008679796349000	-27.992976447621100	0_10
1 Internal	R 13028	115.008417666356000	-27.992973974056100	0_10
2 Internal	R 13028	115.006641777728000	-27.992962910081100	0_10
3 Internal	R 13028	115.005700755786000	-27.993298466488800	0_10
4 Internal	R 13028	115.005338379297000	-27.994554745704500	0_10
5 Internal	R 13028	115.006435932438000	-27.996435491356400	0_10
6 Internal	R 13028	115.006539156071000	-27.996484204053000	0_10
0 Internal	R 38890	115.147040286452000	-27.918890000593500	0_11
1 Internal	R 38890	115.149431434146000	-27.919047022031200	0_11
2 Internal	R 38890	115.149432618468000	-27.919032784269500	0_11
3 Internal	R 38890	115.149440414683000	-27.919033296049000	0_11
4 Internal	R 38890	115.149627432809000	-27.916783234946000	0_11
5 Internal	R 38890	115.147236459800000	-27.916626304866500	0_11
6 Internal	R 38890	115.147228675995000	-27.916625791330300	0_11
7 Internal	R 48435	115.147589091990000	-27.912293289322300	0_11
8 Internal	R 48435	115.147950701243000	-27.907946280860500	0_11
9 Internal	R 48435	115.148312283126000	-27.903599272132200	0_11
10 Internal	R 48435	115.148673836863000	-27.899252249590400	0_11
11 Internal	R 48435	115.149035362233000	-27.894905226769900	0_11
12 Internal	R 48435	115.149396847044000	-27.890558204409800	0_11
13 Internal	R 48435	115.149758316708000	-27.886211181949800	0_11
14 Internal	R 48435	115.150119745061000	-27.881864145501700	0_11
15 Internal	R 48435	115.150481159316000	-27.877517108066100	0_11
16 Internal	R 48435	115.150842531003000	-27.873170071968900	0_11
17 Internal	R 48435	115.151203874625000	-27.868823021160800	0_11
18 Internal	R 48435	115.151565205158000	-27.864475971185100	0_11
19 Internal	R 48435	115.151926493184000	-27.860128920745600	0_11
20 Internal	R 48435	115.152287753957000	-27.855781869144800	0_11
21 Internal	R 48435	115.152648986654000	-27.851434805542400	0_11
22 Internal	R 48435	115.153010191101000	-27.847087740766600	0_11
23 Internal	R 48435	115.153371368291000	-27.842740676636000	0_11
24 Internal	R 48435	115.153732516234000	-27.838393611319600	0_11
25 Internal	R 48435	115.154093637153000	-27.834046534017900	0_11
26 Internal	R 48435	115.154454716679000	-27.829699454466700	0_11
27 Internal	R 48435	115.154815780135000	-27.825352376615100	0_11
28 Internal	R 48435	115.155176817425000	-27.821005297621100	0_11
29 Internal	R 48435	115.155537812520000	-27.816658205538800	0_11
30 Internal	R 48435	115.155898793631000	-27.812311113380500	0_11
31 Internal	R 48435	115.156259733366000	-27.807964020780900	0_11
32 Internal	R 48435	115.156620657349000	-27.803616913642800	0_11
33 Internal	R 48435	115.156981540717000	-27.799269822319600	0_11
34 Internal	R 48435	115.157844137634000	-27.794984448439300	0_11
35 Internal	R 48435	115.158706677266000	-27.790699060046300	0_11
36 Internal	R 48435	115.159569147186000	-27.786413673222100	0_11
37 Internal	R 48435	115.160431534500000	-27.782128271552900	0_11
38 Internal	R 48435	115.161293878569000	-27.777842869103100	0_11

AGM Survey Boundary Point Coordinates



39 Internal	R 48435	115.162156139016000	-27.773557454507700	0_11
40 Internal	R 48435	115.163018331142000	-27.769272024363200	0_11
41 Internal	R 48435	115.163880464839000	-27.764986595048600	0_11
42 Internal	R 48435	115.164742517041000	-27.760701151820100	0_11
43 Internal	R 48435	115.165604511901000	-27.756415707636300	0_11
44 Internal	R 48435	115.166466437467000	-27.752130250608600	0_11
45 Internal	R 48435	115.167328292535000	-27.747844793358800	0_11
46 Internal	R 48435	115.168190093594000	-27.743559321667900	0_11
47 Internal	R 48435	115.169051808198000	-27.739273836011300	0_11
48 Internal	R 48435	115.169913468580000	-27.734988351258700	0_11
49 Internal	R 48435	115.170775059580000	-27.730702865406800	0_11
50 Internal	R 48435	115.171636579629000	-27.726417352265200	0_11
51 Internal	R 48435	115.172498030340000	-27.722131838030500	0_11
52 Internal	R 48435	115.173359424870000	-27.717846325586500	0_11
53 Internal	R 48435	115.173532398733000	-27.713645077704200	0_11
54 Internal	R 48435	115.173705360424000	-27.709443844741300	0_11
55 Internal	R 48435	115.173878307389000	-27.705242597784200	0_11
56 Internal	R 48435	115.174051240434000	-27.701041349478800	0_11
57 Internal	R 48435	115.174224159744000	-27.696840088997700	0_11
58 Internal	R 48435	115.174397064917000	-27.692638840703600	0_11
59 Internal	R 48435	115.174569955364000	-27.688437579318700	0_11
60 Internal	R 48435	115.174742832890000	-27.684236318404800	0_11
61 Internal	R 48435	115.174915709694000	-27.680035056317800	0_11
62 Internal	R 48435	115.175088559380000	-27.675833795417700	0_11
63 Internal	R 48435	115.175261407546000	-27.671632520699200	0_11
64 Internal	R 36656	115.178384127214000	-27.674390990915400	0_11
65 Internal	R 36656	115.181507002226000	-27.677149378218300	0_11
66 Internal	R 36656	115.184630029367000	-27.679907694273500	0_11
67 Internal	R 36656	115.187753223834000	-27.682665941059900	0_11
68 Internal	R 36656	115.190876573485000	-27.685424118393100	0_11
69 Internal	R 36656	115.194148797947000	-27.688312131437400	0_11
70 Internal	R 36656	115.197421191211000	-27.691200047047200	0_11
71 Internal	R 36656	115.200693766032000	-27.694087892435000	0_11
72 Internal	R 36656	115.203966507468000	-27.696975652937100	0_11
73 Internal	R 36656	115.207239418304000	-27.699863345708900	0_11
74 Internal	R 36656	115.210512508999000	-27.702750952806400	0_11
75 Internal	R 36656	115.213785768381000	-27.705638476763700	0_11
76 Internal	R 36656	115.217059195241000	-27.708525931074300	0_11
77 Internal	R 36656	115.220332804033000	-27.711413301454900	0_11
78 Internal	R 36656	115.223606580369000	-27.714300601229300	0_11
79 Internal	R 36656	115.226880523464000	-27.717187817723500	0_11
80 Internal	R 36656	115.230155221580000	-27.720074447606500	0_11
81 Internal	R 36656	115.233430100486000	-27.722961007841700	0_11
82 Internal	R 36656	115.236705147258000	-27.725847483794500	0_11
83 Internal	R 36656	115.239980362703000	-27.728733889886800	0_11
84 Internal	R 36656	115.243255745036000	-27.731620212529500	0_11
85 Internal	R 36656	115.246531309491000	-27.734506451887100	0_11
86 Internal	R 36656	115.249807041913000	-27.737392606848300	0_11
87 Internal	R 36656	115.253082954277000	-27.740278691073800	0_11
88 Internal	R 36656	115.256359035413000	-27.743164707100600	0_11

AGM Survey Boundary Point Coordinates



89 Internal	R 36656	115.259635284590000	-27.746050638645500	0_11
90 Internal	R 36656	115.262911700817000	-27.748936485667500	0_11
91 Internal	R 36656	115.266188689120000	-27.751821913866800	0_11
92 Internal	R 36656	115.269465846526000	-27.754707259297700	0_11
93 Internal	R 36656	115.272743170859000	-27.757592532734800	0_11
94 Internal	R 36656	115.276020677303000	-27.760477737948900	0_11
95 Internal	R 36656	115.279298350110000	-27.763362845833400	0_11
96 Internal	R 36656	115.282576190920000	-27.766247882553600	0_11
97 Internal	R 36656	115.285854214158000	-27.769132835624400	0_11
98 Internal	R 36656	115.289132404394000	-27.772017720168000	0_11
99 Internal	R 36656	115.292410762921000	-27.774902519926400	0_11
100 Internal	R 36656	115.295689302726000	-27.777787249471600	0_11
101 Internal	R 36656	115.298968024259000	-27.780671881703600	0_11
102 Internal	R 36656	115.302317572579000	-27.783618498015600	0_11
103 Internal	R 36656	115.305667316040000	-27.786565031069000	0_11
104 Internal	R 36656	115.309017227301000	-27.789511478692300	0_11
105 Internal	R 36656	115.312367320538000	-27.792457844638600	0_11
106 Internal	R 36656	115.315717609830000	-27.795404138976800	0_11
107 Internal	R 36656	115.319068066154000	-27.798350336953000	0_11
108 Internal	R 36656	115.322418704590000	-27.801296449550900	0_11
109 Internal	R 36656	115.325769524902000	-27.804242493884900	0_11
110 Internal	R 36656	115.329120525350000	-27.807188452754800	0_11
111 Internal	R 36656	115.329528556545000	-27.807547576390000	0_11
112 Internal	R 36656	115.332286328892000	-27.809971663993600	0_11
113 Internal	R 36656	115.335044212503000	-27.812395711715400	0_11
114 Internal	R 36656	115.337138989732000	-27.814237131558600	0_11
115 Internal	R 36656	115.339233837683000	-27.816078524013500	0_11
116 Internal	R 36656	115.342260821851000	-27.818739121970100	0_11
117 Internal	R 36656	115.345545466871000	-27.821625904656900	0_11
118 Internal	R 36656	115.348830293129000	-27.824512604768200	0_11
119 Internal	R 36656	115.352115286248000	-27.827399234738300	0_11
120 Internal	R 36656	115.355400447488000	-27.830285780112900	0_11
121 Internal	R 36656	115.358685790040000	-27.833172242825400	0_11
122 Internal	R 36656	115.361971301547000	-27.836058636237400	0_11
123 Internal	R 36656	115.365256993443000	-27.838944944210100	0_11
124 Internal	R 36656	115.368542853546000	-27.841831168374900	0_11
125 Internal	R 36656	115.371828881663000	-27.844717323141500	0_11
126 Internal	R 36656	115.375115090219000	-27.847603394186900	0_11
127 Internal	R 36656	115.378401481270000	-27.850489381505700	0_11
128 Internal	R 36656	115.381718535803000	-27.853402163042200	0_11
129 Internal	R 36656	115.385311215192000	-27.856556734279000	0_11
130 Internal	R 36656	115.388904090581000	-27.859711222740000	0_11
131 Internal	R 36656	115.392497174443000	-27.862865611385000	0_11
132 Internal	R 36656	115.396090468788000	-27.866019903809600	0_11
133 Internal	R 36656	115.399683972659000	-27.869174098159300	0_11
134 Internal	R 36656	115.403277685891000	-27.872328207932500	0_11
135 Internal	R 36656	115.406489323646000	-27.875146023018300	0_11
136 Internal	R 36656	115.409701130676000	-27.877963781722800	0_11
137 Internal	R 36656	115.412913103337000	-27.880781456900100	0_11
138 Internal	R 36656	115.416125230509000	-27.883599046590500	0_11

AGM Survey Boundary Point Coordinates



139	Internal	R 36656	115.418063333851000	-27.885298993330100	0_11
140	External	STP-EPA-0127	115.418063821010000	-27.915413267634200	0_11
141	External	STP-EPA-0127	115.418067434794000	-27.998748664612600	0_11
142	External	STP-EPA-0127	115.418070214976000	-28.082085619572800	0_11
143	External	STP-EPA-0127	115.418071741256000	-28.165422060746300	0_11
144	External	STP-EPA-0127	115.334739220338000	-28.165423474615800	0_11
145	External	STP-EPA-0127	115.334740071204000	-28.248757409928700	0_11
146	External	STP-EPA-0127	115.251404289230000	-28.248758952015200	0_11
147	External	STP-EPA-0127	115.168073550561000	-28.248759755327700	0_11
148	External	STP-EPA-0127	115.168074146099000	-28.165425691934200	0_11
149	External	STP-EPA-0127	115.168074885168000	-28.082089218891900	0_11
150	External	STP-EPA-0127	115.168074900688000	-27.998752938993500	0_11
151	Internal	R 48435	115.135076056123000	-27.998759415877800	0_11
152	Internal	R 48435	115.135118808943000	-27.998540096944100	0_11
153	Internal	R 48435	115.135958901089000	-27.994230345555600	0_11
154	Internal	R 48435	115.136798921052000	-27.989920595047900	0_11
155	Internal	R 48435	115.137638872951000	-27.985610843674600	0_11
156	Internal	R 48435	115.138478767438000	-27.981301064508400	0_11
157	Internal	R 48435	115.139318578643000	-27.976991285178200	0_11
158	Internal	R 48435	115.140158334030000	-27.972681506058100	0_11
159	Internal	R 48435	115.140998032835000	-27.968371713603200	0_11
160	Internal	R 48435	115.141837648673000	-27.964061906556900	0_11
161	Internal	R 48435	115.142677208757000	-27.959752099729000	0_11
162	Internal	R 48435	115.143516698880000	-27.955442292930000	0_11
163	Internal	R 48435	115.144356118542000	-27.951132457276800	0_11
164	Internal	R 48435	115.144707446751000	-27.946915215908700	0_11
165	Internal	R 48435	115.145058760250000	-27.942697958452800	0_11
166	Internal	R 48435	115.145410045548000	-27.938480701874800	0_11
167	Internal	R 48435	115.145425106089000	-27.938299639035700	0_11
168	Internal	R 48435	115.145748186810000	-27.934417713933400	0_11
169	Internal	R 48435	115.146071253207000	-27.930535788728300	0_11
170	Internal	R 48435	115.146394292049000	-27.926653865047600	0_11
171	Internal	R 48435	115.146717303390000	-27.922771940185100	0_11
0	Internal	R 17946	115.225412050188000	-27.932430174233800	0_12
1	Internal	R 17946	115.225357515680000	-27.936360111105200	0_12
2	Internal	R 17946	115.229446128308000	-27.936404715100900	0_12
3	Internal	R 17946	115.233534763088000	-27.936449226793700	0_12
4	Internal	R 17946	115.237623397407000	-27.936493598060100	0_12
5	Internal	R 17946	115.241712023759000	-27.936537851366600	0_12
6	Internal	R 17946	115.241761318032000	-27.932907324755800	0_12
7	Internal	R 17946	115.241810590636000	-27.929276806837800	0_12
8	Internal	R 17946	115.241859889597000	-27.925646281078300	0_12
9	Internal	R 17946	115.241909174147000	-27.922015755079700	0_12
10	Internal	R 17946	115.237821656914000	-27.921971713013700	0_12
11	Internal	R 17946	115.233734107565000	-27.921927537442900	0_12
12	Internal	R 17946	115.229646590788000	-27.921883250855800	0_12
13	Internal	R 17946	115.225559058038000	-27.921838840897100	0_12
14	Internal	R 17946	115.225512834291000	-27.925169543952700	0_12
15	Internal	R 17946	115.225466609987000	-27.928500238214800	0_12
0	Internal	R 17940	115.331809180234000	-27.923141592743600	0_13

AGM Survey Boundary Point Coordinates



1 Internal	R 17940	115.328572913375000	-27.925976477349700	0_13
2 Internal	R 17940	115.325336464420000	-27.928811279057000	0_13
3 Internal	R 17940	115.322099860593000	-27.931646009902300	0_13
4 Internal	R 17940	115.318863090876000	-27.934480657992500	0_13
5 Internal	R 17940	115.315626138794000	-27.937315235734800	0_13
6 Internal	R 17940	115.319626375283000	-27.937355958342000	0_13
7 Internal	R 17940	115.323626596951000	-27.937396555473400	0_13
8 Internal	R 17940	115.327626832835000	-27.937437053656200	0_13
9 Internal	R 17940	115.331627068073000	-27.937477426536300	0_13
10 Internal	R 17940	115.331672597255000	-27.933893464283600	0_13
11 Internal	R 17940	115.331718124007000	-27.930309502892300	0_13
12 Internal	R 17940	115.331763652201000	-27.926725555044800	0_13
0 Internal	R 17940	115.328435631297000	-27.925589624331000	0_14
1 Internal	R 17940	115.331236821453000	-27.923135864768300	0_14
2 Internal	R 17940	115.327360722163000	-27.923097014722600	0_14
3 Internal	R 17940	115.323484636571000	-27.923058066544700	0_14
4 Internal	R 17940	115.319608549681000	-27.923019005612400	0_14
5 Internal	R 17940	115.315732464521000	-27.922979834669900	0_14
6 Internal	R 17940	115.315460277119000	-27.922977082998200	0_14
7 Internal	R 17940	115.315428187227000	-27.925458139684000	0_14
8 Internal	R 17940	115.315396112014000	-27.927939196581500	0_14
9 Internal	R 17940	115.315356576910000	-27.930997334433600	0_14
10 Internal	R 17940	115.315317028695000	-27.934055471705100	0_14
11 Internal	R 17940	115.315277493770000	-27.937113609621500	0_14
12 Internal	R 17940	115.318729958279000	-27.934090271360500	0_14
13 Internal	R 17940	115.322182241605000	-27.931066848698300	0_14
14 Internal	R 17940	115.325634328510000	-27.928043343286500	0_14
0 Internal	R 12648	115.194782699561000	-27.979691141256900	0_15
1 Internal	R 12648	115.198350429409000	-27.976567988253800	0_15
2 Internal	R 12648	115.199135605010000	-27.976268377776300	0_15
3 Internal	R 12648	115.195175141062000	-27.976268699715100	0_15
4 Internal	R 12648	115.191214677984000	-27.976268893937800	0_15
5 Internal	R 12648	115.191214719778000	-27.979541552477700	0_15
6 Internal	R 12648	115.191214760755000	-27.982814211409400	0_15
0 Internal	R 12648	115.195203150033000	-27.983530374810400	0_16
1 Internal	R 12648	115.199191525481000	-27.983528907626700	0_16
2 Internal	R 12648	115.199190366416000	-27.979989425807800	0_16
3 Internal	R 12648	115.199189206897000	-27.976449929708700	0_16
4 Internal	R 12648	115.198565761179000	-27.976761862420300	0_16
5 Internal	R 12648	115.196115534685000	-27.978906805156900	0_16
6 Internal	R 12648	115.193665197114000	-27.981051692549000	0_16
7 Internal	R 12648	115.191214775686000	-27.983196537577100	0_16
8 Internal	R 12648	115.191214775194000	-27.983531728881600	0_16
0 Internal	R 38378	115.186012818960000	-28.071014141496900	0_17
1 Internal	R 38378	115.186013042755000	-28.067070637900100	0_17
2 Internal	R 38378	115.184006065176000	-28.067072649445600	0_17
3 Internal	R 38378	115.182637999272000	-28.067563953916100	0_17
4 Internal	R 38378	115.182636629549000	-28.071013275752900	0_17

Attachment 3: Stakeholder Engagement Summary

Attachment 3: Stakeholder Consultation Summary

Stakeholder(s)	Timeframe	Summary	Outcomes / Issues / Actions	Close out of Issues / Actions
Wajarri Yamatji Native Title Party (Determined and Claim)	December 2019 – March 2023	Re-commencement of Native Title and Heritage Protection Agreement negotiations.	Heritage Protection Agreement executed in March 2023.	Negotiations closed out.
Nanda People Native Title Party (Determined and Claim)	2021 – March 2023	Re-commencement of Native Title and Heritage Protection Agreement negotiations.	Heritage Protection Agreement executed in March 2023.	Negotiations closed out.
Mullewa Wadjari Native Title Party (Claim)	2021 – March 2023	Re-commencement of Native Title and Heritage Protection Agreement negotiations.	Heritage Protection Agreement executed in March 2023.	Negotiations closed out.
Local Government Authorities	2021 – current	Overview of Permit Application and subsequent Permit Work Program. Specific activities and timeframes as known, permission to conduct aerial survey.	Commitment to ongoing communications via email with periodic face to face as appropriate. No objections raised to aerial survey or other proposed activities at this stage.	Ongoing communications being conducted, therefore action closed out as ongoing in accordance with Stakeholder Engagement Plan.
DBCA	2021 – current	Overview of Permit Application and subsequent Permit Work Program. Specific activities and timeframes as known, permission to conduct aerial survey.	Ongoing communication.	Ongoing communications being conducted, therefore action closed out as ongoing in accordance with Stakeholder Engagement Plan.
DWER	2021 – ongoing	Overview of Permit Application and subsequent Permit Work Program. Specific activities and timeframes as known.	Ongoing communication especially when planning drilling or other on ground activities.	Ongoing communications being conducted, therefore action closed out as ongoing in accordance with Stakeholder Engagement Plan.
DBCA	July – October 2023	Discussion regarding 2023 spring survey adjacent to Class A nature reserve.	Land not managed by DBCA, so no permissions required	No further action required.
DBCA	July 2023 – December 2023	Discussion regarding S15A consent for Toolonga and Wandana Nature Reserves for aerial survey.	Send EP once submitted to DMIRS	EP provided to DBCA 3 November 2023. Additional supporting documentation provided during November and December 2023.

Stakeholder(s)	Timeframe	Summary	Outcomes / Issues / Actions	Close out of Issues / Actions
				<p>DBCA responded to DEMIRS regarding S15A consent in December 2023.</p> <p>No further action required.</p>
Yamatji Southern Regional Corporation Native Title Group	June – October 2023	Discussion regarding executing a YPSHA, integration of the ACH Act, Heritage Notices and timing, concurrent Heritage Notice for Aerial Survey alongside negotiation of YPSHA.	Agreed concurrent activities. Subsequently with repeal pending on ACH Act and reverting to AH Act, YPSHA executed in October 2023	YPSHA executed.
Yamatji Southern Regional Corporation Native Title Group	June 2023 – ongoing	Communication regarding upcoming activities in general and Heritage Notice for Aerial Survey	No objections or concerns received to date	N/A
Wajarri Yamatji Native Title Party (Determined and Claim)	21 July 2023	Monitoring and Heritage Committee Meeting #1. Discussed protocols and processes under the HPA, Permit Work Program, Aerial survey, 2023 spring survey, timing of meetings.	<p>Agreed July and February as tentative timing for bi-annual meetings.</p> <p>No objections to aerial survey.</p> <p>Cultural Heritage induction requirements for 2023 spring survey and prior to any ongoing activities.</p>	<p>Monitoring and Heritage Committee Meeting #1 conducted. Closed.</p> <p>No objections to Aerial Survey.</p> <p>Cultural Heritage inductions planned for stakeholder engagement personnel and 2023 spring survey personnel. Conducted in August and October 2023. Closed.</p>
Mullewa Wadjari Native Title Party (Claim)	24 July 2023	Monitoring and Heritage Committee Meeting #1. Discussed protocols and processes under the HPA, Permit Work Program, Aerial survey, 2023 spring survey, timing of meetings.	<p>Agreed July and February as tentative timing for bi-annual meetings.</p> <p>No objections to aerial survey.</p> <p>Cultural Heritage induction requirements for 2023 spring survey and prior to any ongoing activities.</p>	<p>Monitoring and Heritage Committee Meeting #1 conducted. Closed.</p> <p>No objections to Aerial Survey.</p> <p>Cultural Heritage inductions planned for stakeholder engagement personnel and 2023 spring survey personnel. Conducted in August and October 2023. Closed.</p>
Nanda People Native Title Party (Determined and Claim)	15 September 2023	Monitoring and Heritage Committee Meeting #1. Discussed protocols and processes under the HPA, Permit Work Program, Aerial survey, timing of meetings.	<p>Agreed July and February as tentative timing for bi-annual meetings.</p> <p>No objections to aerial survey.</p>	<p>Monitoring and Heritage Committee Meeting #1 conducted. Closed.</p> <p>No objections to Aerial Survey.</p> <p>Cultural Heritage inductions planned for on country with stakeholder personnel in February 2024 as initial inductions.</p>

Stakeholder(s)	Timeframe	Summary	Outcomes / Issues / Actions	Close out of Issues / Actions
			Cultural Heritage induction requirements discussed and will be trialled at February 2024 meeting.	
Landholders and Lease holders (~50)	July 2023 - ongoing	Overview of Permit Application and subsequent Permit Work Program. Specific activities and timeframes as known, permission to conduct aerial survey.	Initial letters sent outlining Permit Work Program. Specific activities and timeframes as known, permission to conduct aerial survey. Due to seasonal activity, commitment from Warrego Energy to follow up in late January onwards specifically.	Follow up to be initiated in late January 2024 to aim to complete face to face meetings, if not at least phone calls with all landholders and leaseholders.
DPLH	July – October 2023	Notification of 2023 spring survey and general Permit activities including aerial survey. Seeking confirmation of leasehold contact details to facilitate direct stakeholder contact	No issues raised regarding 2023 spring survey or aerial survey. Confirmation of correct contact details for leasehold contact.	No issues raised. All DPLH reserves excluded from aerial survey, so no S15A required from DPLH.
Landholders and Lease holders (3)	July – October 2023	Overview of Permit Work Program and seeking and obtaining land access permission for 2023 spring survey.	Land access permission granted by email, phone, text and signed agreement.	Permission obtained from all 3 landholders / lessees.
Wajarri Yamatji Native Title Party (Determined and Claim)	September – October 2023	Liaison regarding CH induction for 2023 spring survey team.	CH induction completed.	Closed.
Mullewa Wadjari Native Title Party (Claim)	September – October 2023	Liaison regarding CH induction for 2023 spring survey team.	CH induction completed.	Closed.
AGIG / DBP (Pipeline owner / operator)	August 2023 - ongoing	General discussions regarding Permit grant and upcoming activities including aerial survey.	DBNGP corridor excluded from aerial survey.	N/A
Mineral title holders and applicants	October 2023	Letter notification sent regarding Permit activities and outlining the aerial survey.	No issues or objections to aerial survey.	Letters sent via post and email in January and February 2024.
Local tourism operators / roadhouses, etc	October 2023	Letter notification sent regarding Permit activities and outlining the aerial survey.	No issues or objections to aerial survey.	In person follow up being conducted in February 2024 and ongoing.