

Soil Gas Sampling Environment Plan

Summary Document

HSE-SUM-075 | Revision 0 | 20/10/2023

Contents

1 Introduction	1
1.1 Contact Details	1
2 Overview of Activity	1
2.1 Timing.....	1
2.2 Soil Sampling	1
2.3 Waste	4
2.4 Demobilisation	4
3 Environmental Impacts and Management Measures	4
3.1 Communication and Consultation	8

Figures

Figure 1 SPA_Area1-Norseman Activity Area overview.....	2
Figure 2 SPA_Area2-Perth Activity Area overview	3

Table

Table 1 Summary of the existing environment, potential impacts and management approach with the Activity.....	5
---------------------------------------------------------------------------------------------------------------	---



1 Introduction

2H Resources (Company) is a subsidiary of Buru Energy Limited (Buru Energy, Buru); an Australian ASX listed company; and is engaged in natural gas exploration in the Wheatbelt and Goldfields-Esperance regions of Western Australia. The Company currently operates under Buru Energy Limited's management systems, including its policies and procedures.

The Company has developed the *Soil Gas Sampling Environment Plan* (HSE-PLN-076) (Environment Plan) for the management of environmental aspects associated with the Company's soil gas sampling activities for the detection of helium and other natural gases in Special Prospecting Authority (SPA) areas in Western Australia. This Summary Document summarises the activities and mitigation and management measures in the approved Environment Plan.

1.1 Contact Details

Contact details for the Company are:

2H Resources

Phone: +61 8 9215 1800

Email: info@2HResources.com.au

2 Overview of Activity

The SPA areas, as identified and shown in Figure 1 and Figure 2, are approximately 140 km North-East of Perth and 550 km East of Perth, respectively.

The Activity is aimed at high-grading areas with elevated levels of natural gas expulsion including helium and other natural gasses, for potential future exploration.

2.1 Timing

The Activity is currently planned for Q2 or Q3 2024. The duration of field activities will take approximately 6 weeks.

2.2 Soil Sampling

Soil sampling will be undertaken at specified locations with gas detection equipment along traverses in SPA_Area1-Norseman (Figure 1) and in SPA_Area2-Perth (Figure 2).

No clearing of vegetation is required as soil sampling locations will be located in existing road reserves and previously disturbed mineral drill sites.

A light vehicle will stop along the road easement or access track at pre-determined survey points. A gas vapour probe kit will be utilised at each survey location to collect soil gas samples. Depending on the activity area, sampling will be done by driving the probe into the soil by drilling a small diameter hole to a depth of approximately 1 m. In SPA_Area1-Norseman, the probe will be driven into the soil of a previously disturbed mineral drill site. Tubing is connected to the probe and the gas sample collected in a sample bag;

Any holes created during the activity will be backfilled prior to moving to the next sample location.



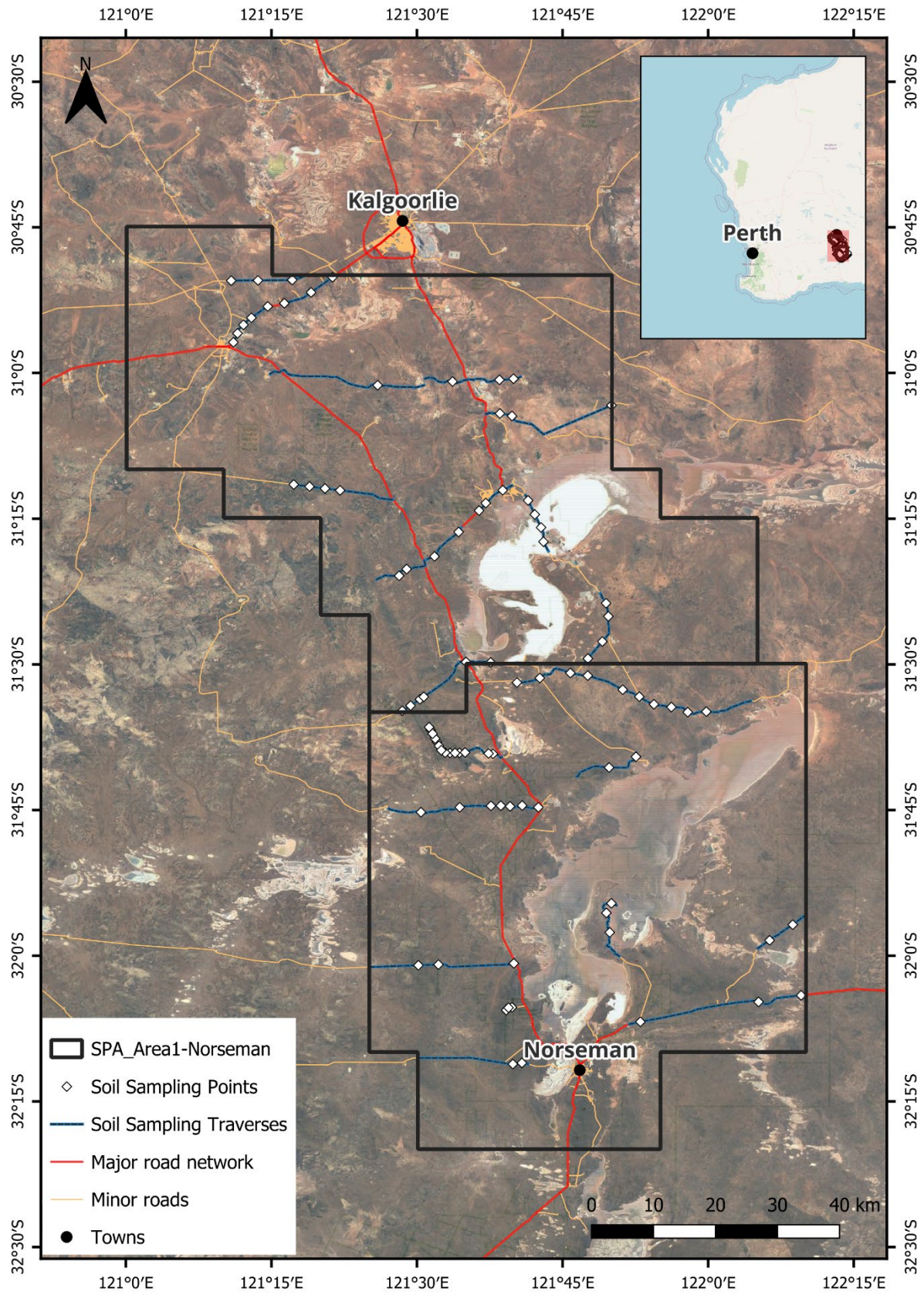


Figure 1 SPA_Area1-Norseman Activity Area overview



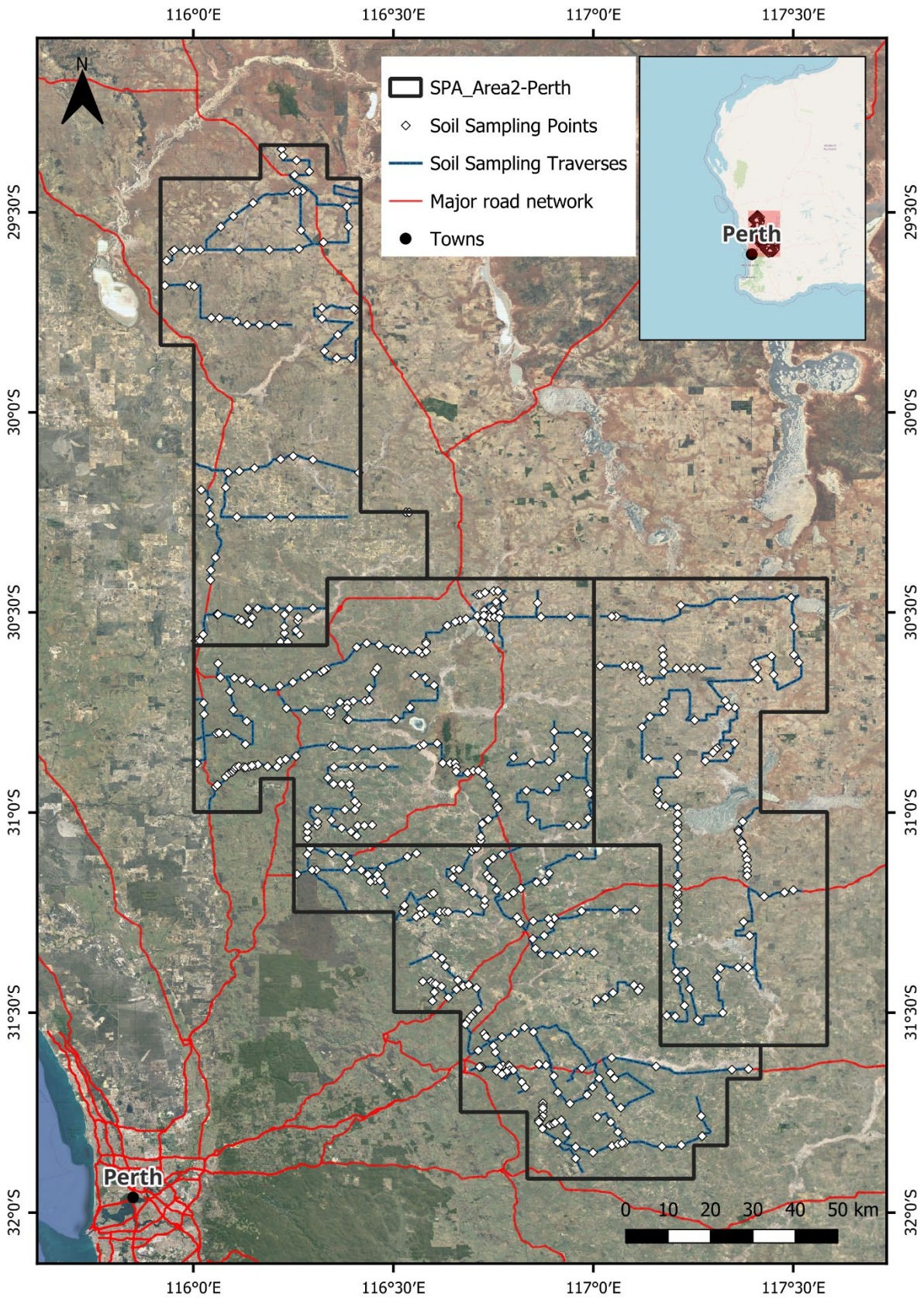


Figure 2 SPA_Area2-Perth Activity Area overview



2.3 Waste

No specific waste is expected to be generated during the Activities. Waste, if any, would be limited to putrescible or general waste produced by the personnel. All daily general waste will be kept inside the light vehicle and disposed offsite each day.

2.4 Demobilisation

Upon completion of the Activities, demobilisation will be implemented in accordance with the *Demobilisation Procedure* (HSE-PRO-021). Demobilisation will include the removal of all equipment and personnel from the Activity areas, and ensuring no waste is left behind.

3 Environmental Impacts and Management Measures

The Activity will be confined to the soil sampling buffer locations and traverses within SPA_Area1-Norseman, and to the soil sampling locations and traverses within SPA_Area2-Perth. A summary of the existing environmental characteristics of surrounding the Activity area, potential impacts that could result from the Activity and the risk of these potential impacts occurring is provided in Table 1. Included in this Table are also the management and mitigation measures that form part of the implementation strategy to minimise environmental risk.



Table 1 Summary of the existing environment, potential impacts and management approach with the Activity.

Environmental characteristic	Description	Potential Impact	Management Measures	Risk	Implementation Strategy
Groundwater	Groundwater in the Activity areas is expected to be close to the surface, given the local scale flow systems and the shallow valley floor aquifers. Based on local and regional data, groundwater at the Activity areas ranges between fresh to hypersaline, particularly towards salt lakes.	Contamination of groundwater.	<ul style="list-style-type: none"> Regular inspections of the vehicle during the Activity. Vehicle and personnel restricted to the Activity areas. All spills cleaned up in accordance with the <i>Soil Gas Sampling Spill Response Plan</i> (HSE-ER-023). 	Given the mitigation and management measures that will be implemented, contamination is unlikely.	<ul style="list-style-type: none"> Company Representative to ensure all environmental incidents are reported. Company Representative to ensure no disturbance outside of the Activity areas.
Landforms and surface water	<p>The Yilgran Craton landscape in the Activity areas is characterised by a low plateau, undulating with little relief, along with chains of salt lakes. Perennial salt lakes, as well as minor non-perennial watercourses, feature across the Activity areas, in proximity to the soil sampling locations.</p> <p>Soil types in the Activity areas vary considerably, from sandy / loamy soils or earths, sand, gravel, stony soils and wet / saline / salt lake soils. Areas in road reserves and previously disturbed mineral drill sites are expected to be historically cleared, likely compacted and may also be surface coated with gravel.</p>	Contamination of soil or surface water.		Through the implementation of management measures, it is unlikely that the Activity will have an impact on landforms or surface water.	<ul style="list-style-type: none"> Visual inspection of Activity areas following demobilisation. Internal environmental audit.
Vegetation and Flora	<p>The SPA_Area1-Norseman Activity areas are located in the Coolgardie Botanical District.</p> <p>The SPA_Area2-Perth Activity areas are located in road reserves, within the Avon Botanical District. Many different pre-European vegetation units feature within the Activity areas.</p>	Loss of native flora species including competition by weed species.	<ul style="list-style-type: none"> Vehicle and personnel restricted to the Activity areas. Cleared areas on the road reserves in SPA_Area2-Perth, and easily accessible previously disturbed mineral drill sites in SPA_Area1-Norseman will be prioritised as sampling locations. Personnel vehicle inspected for weeds or weed contaminated materials, and cleaned prior to arrival at Activity areas. 	Given the existing landscape, and through the implementation of management measures, it is unlikely that	<ul style="list-style-type: none"> Visual inspection of Activity areas following demobilisation. Internal environmental audit.



Environmental characteristic	Description	Potential Impact	Management Measures	Risk	Implementation Strategy
	<p>Road reserves and previously disturbed mineral drill sites are expected to be historically cleared, however conservation significant flora species may be present in areas which have not been historically cleared. Some Environmentally Sensitive Areas are located surrounding the Activity areas, adjacent to road reserves.</p>		<ul style="list-style-type: none"> Activity areas will not encroach onto ESA boundaries. Fire management measures to be implemented. 	<p>the Activity will have a significant impact on flora and vegetation.</p>	
Fauna	<p>As the Activity areas are located in road reserves and previously disturbed mineral drill sites which have the potential to be already be significantly disturbed, fauna habitat may be limited. Surrounding land use in SPA_Area1-Norseman consists mainly of mining. Surrounding land use in SPA_Area2-Perth consists of agricultural activities and cropping fields, further restricting fauna habitat. Desktop searches show that conservation significant fauna species have the potential to be present in the area or may pass through the area.</p>	<p>Loss of a local population of a conservation significant fauna species.</p> <p>Disturbance of fauna.</p>	<ul style="list-style-type: none"> Vehicle and personnel restricted to the Activity areas. Vehicles will comply with <i>Travel Management Procedure</i> (HSE-PRO-002). Activity restricted to daylight hours. 	<p>Given the existing landscape, the nature and duration of the activity, it is unlikely that the Activity will significantly impact fauna.</p>	
Cultural Heritage and Stakeholders	<p>In SPA_Area1-Norseman, the Activity areas are located alongside tracks and roads, within Shire or State managed road reserves and within mining leases. In SPA_Area2-Perth, the Activity areas are located on Shire or State managed road reserves, within an agricultural landscape. The Activity will not encroach on private properties. No registered Department of Aboriginal Affairs sites are located at the proposed soil sampling locations. Heritage sites</p>	<p>Loss of environmental values associated with heritage site.</p> <p>Disturbance of local residents.</p>	<ul style="list-style-type: none"> Vehicle and personnel restricted to the Activity areas. Sampling locations selected away from heritage sites. Cleared areas on the road reserves in SPA_Area2-Perth and on previously disturbed drill sites in SPA_Area1-Norseman will be prioritised as sampling locations. Vehicles will comply with <i>Travel Management Procedure</i> (HSE-PRO-002). On-going consultation with local landholders, traditional owners and other stakeholders. 	<p>Given limited use of the area by the local community and the implementation of the management measures, impacts to the community are unlikely.</p>	<ul style="list-style-type: none"> Visual inspection of Activity areas following demobilisation. Internal environmental audit.



Environmental characteristic	Description	Potential Impact	Management Measures	Risk	Implementation Strategy
	located on the established roads (on the traverses) or in the sampling buffers will not be impacted.				



3.1 Communication and Consultation

The Company will be engaging in communication and consultation with relevant stakeholders as summarised in the Environment Plan. The Activity areas are located within sparsely populated regions in agricultural settings. The stakeholders identified include:

- Department of Mines, Industry Regulation and Safety;
- Main Roads WA;
- Relevant mining companies on whose tenements the Activity will occur;
- Relevant pastoral leaseholders;
- Relevant Aboriginal Corporations; and
- Relevant Shires.

Stakeholders will be updated on the progress of the Activity and consulted with on an ongoing basis, as relevant / requested. This includes providing updates on any unforeseen changes, such as delays to the intended commencement or completion of the Activity set out in this Environment Plan.

