

<b>DOCUMENT NO</b> PB-HSE-PLN-00004SUM	<b>REVISION</b> Rev 3	<b>DATE OF REVISION</b> 16/11/2021
---	--------------------------	---------------------------------------



**mitsui** E&P  
Australia

# **PERTH BASIN FACILITIES ENVIRONMENT PLAN SUMMARY**

---

**REVIEW FREQUENCY**

Next Revision Date	Revision Cycle
16/11/2026	5 years

**REVISION HISTORY**

REVISION #	DATE	AMENDMENTS
3	12/10/2021	Submitted to DMIRS for review and approval
2	28/05/2021	Submitted to DMIRS for review and approval
1	20/04/2020	Submitted to DMIRS for review and approval
0	21/05/2019	Submitted to DMIRS for review and approval

**DISTRIBUTION**

All controlled documentation is uploaded and managed in the MEPAU Document Management System (DMS). Reader should access the DMS to ensure latest version is always referenced.

Distribution outside of the DMS is to the discretion of the document author / owner.

**Disclaimer:**

This document is protected by copyright, no part of this document may be reproduced or adapted without the consent of the originator/company owner, all rights are reserved. This document is “uncontrolled when printed”, refer to electronic copy for up to date version.

## TABLE OF CONTENTS

<b>RELATED DOCUMENTS .....</b>	<b>5</b>
<b>TERMS, ABBREVIATIONS AND DEFINITIONS .....</b>	<b>5</b>
<b>1.0 INTRODUCTION .....</b>	<b>7</b>
1.1 Purpose.....	7
1.2 Scope .....	7
1.3 Nominated Contact Details.....	8
<b>2.0 DESCRIPTION OF THE ACTIVITY .....</b>	<b>8</b>
2.1 Timeframe and Schedule .....	8
2.2 Activity Description .....	8
2.2.1 WGP Activities .....	9
2.2.2 DGF Activities .....	10
2.2.3 Hovea and Eremia Oil Field Activities .....	11
2.2.4 WGF Activities .....	12
2.2.5 Arrowsmith-02 Wellsite Activities.....	12
2.3 Decommissioning and Site Reinstatement .....	12
2.4 Chemical Disclosure.....	13
<b>3.0 DESCRIPTION OF THE ENVIRONMENT.....</b>	<b>14</b>
<b>4.0 ENVIRONMENTAL RISK ASSESSMENT AND MANAGEMENT .....</b>	<b>19</b>
<b>5.0 IMPLEMENTATION STRATEGY .....</b>	<b>21</b>
5.1 Management System Overview .....	21
5.1.1 Documentation Hierarchy.....	21
5.1.2 Corporate HSE Elements.....	22
5.1.3 Systems, Practices and Procedures .....	23
5.2 Environment Plan Review .....	25
<b>6.0 CONSULTATION .....</b>	<b>25</b>
6.1 Ongoing Consultation .....	26
<b>7.0 REFERENCES.....</b>	<b>26</b>
Attachment 1 Perth Basin Location Figures.....	29
Attachment 1.01 Permit Boundaries.....	30
Attachment 1.02 Waitsia Gas Project Field Layout .....	31
Attachment 1.03 Dongara Gas Field Layout .....	32
Attachment 1.04 Hovea & Eremia Field Layout.....	33
Attachment 1.05 Woodada Gas Field Layout .....	34
Attachment 1.06 Arrowsmith-02 Layout .....	35
Attachment 2 DPF WDW Chemical Disclosure.....	36

**LIST OF FIGURES**

Figure 3-1 WGP – HPF – Eremia – XAGGS Environmental Sensitivities ..... 16  
Figure 3-2 Dongara Gas Field Environmental Sensitivities..... 17  
Figure 3-3 Woodada Gas Field and Arrowsmith Environmental Sensitivities ..... 18  
Figure 5-1 HSEMS Documentation Hierarchy..... 22

**LIST OF TABLES**

Table 1-1 Overview of the Perth Basin Oil and Gas Fields ..... 7  
Table 1-2 Nominated Contact Details ..... 8  
Table 2-1 List of Location Figures ..... 9  
Table 3-1 Perth Basin Description of the Environment Summary ..... 14  
Table 4-1 Risk Assessment Outcome Summary ..... 19  
Table 5-1 HSE Elements ..... 22  
Table 5-2 Systems, Practices and Procedures ..... 23

## RELATED DOCUMENTS

Document Number	Document Title
HSE-E-075	Perth Basin WIA Environment Plan
HSE-SC-306	MEPAU's Perth Basin Operations Risk Matrix
MEP-EXA-GDL-001	MEPAU Stakeholder Engagement Framework
MEP-HSE-POL-001	MEPAU HSE Policy
PB-HSE-PLN-00001	Waste Management Plan
PB-HSE-PLN-00002	Fauna Management Plan
PB-HSE-PLN-00003	Chemical and Hazardous Material Management Plan
PB-HSE-PLN-00004	Perth Basin Environment Plan
PB-HSE-PLN-00007	Perth Basin Emergency Response Plan
PB-HSE-PLN-00009	Perth Basin Oil Spill Contingency Plan
PB-HSE-PLN-00012	Weed and Vegetation Management Plan
PB-HSE-PRO-119	Surveillance Sampling Program
PB-OPS-PRO-00001	Permit To Work Procedure
PB-OPS-PRO-00029	Bulk Transfer Procedure

## TERMS, ABBREVIATIONS AND DEFINITIONS

Term or abbreviation	Definition
ALARP	As Low As Reasonably Practicable
AWE Perth Pty Ltd	Subsidiary of Mitsui & Co. Ltd (trading as MEPAU)
C&M	Care and Maintenance (infrastructure is kept in accordance with a C&M plan ready for reinstatement to operating or decommissioning)
CMMS	Computerised Maintenance Management System
Comingled Waste Water	Defined term for collective waste water i.e. Produced Water, storm water, washdown water, oily water etc. (Stored in horizontal tanks and reinjected into WDW)
DBCA	Department of Biodiversity, Conservation and Attractions
DBNGP	Dampier Bunbury Natural Gas Pipeline
Decommissioning	Decommissioning and removal of redundant infrastructure using machinery and potential ground disturbance activities
DFES	Department of Fire and Emergency Services
DGF	Dongara Gas Field
DMIRS	Department of Mines, Industry Regulation and Safety
DMS	Document Management System
DPF	Dongara Production Facility

<b>Term or abbreviation</b>	<b>Definition</b>
DWER	Department of Water and Environmental Regulation
EP	Environment Plan
ERP	Emergency Response Plan
ESA	Environmentally Sensitive Area
GDE	Groundwater Dependent Ecosystem
HPF	Hovea Production Facility
HSEMS	Health, Safety and Environment Management System
MEPAU	Mitsui E&P Australia Group (Mitsui E&P Australia Pty Ltd and AWE Ltd)
MNES	Matters of National Environmental Significance
NGER	National Greenhouse and Energy Reporting
NPI	National Pollutant Inventory
OSCP	Oil Spill Contingency Plan
PGER(E)R	Petroleum and Geothermal Energy Resources (Environment) Regulations 2012
Redundant infrastructure	Small scale infrastructure including but not limited to valves, pipework, flowlines, pipelines, storage tanks and other associated infrastructure
SDS	Safety Data Sheet
WDW	Water Disposal Well
WEP	Waitsia Export Pipeline
WGF	Woodada Gas Field
WGP	Waitsia Gas Project
WIA	Well Intervention Activity
WPF	Woodada Production Facility
XPF	Xyris Production Facility
YNR	Yardanogo Nature Reserve

## 1.0 INTRODUCTION

AWE Perth Pty Ltd (AWE) is a wholly owned subsidiary of AWE Limited. Mitsui E&P Australia Pty Ltd and AWE Limited are wholly owned subsidiaries of Mitsui & Co. Ltd. Combined they form the unified brand Mitsui E&P Australia Group (MEPAU).

The onshore MEPAU Perth Basin Oil and Gas Fields are located near the town of Dongara approximately 360 kilometers north of Perth, Western Australia. Table 1-1 details the Perth Basin Oil and Gas Fields associated with this EP.

**Table 1-1 Overview of the Perth Basin Oil and Gas Fields**

Field	Associated Facility	Status
Waitsia Gas Field (WGF)	Xyris Production Facility (XPF)	Operating
Dongara Gas Field (DGF)	Dongara Production Facility (DPF)	Partially under Care and Maintenance (C&M)
Hovea / Eremia Oil Field	Hovea Production Facility (HPF)	Partially under C&M
Woodada Gas Field (WGF)	Woodada Production Facility (WPF)	C&M
<u>Arrowsmith</u>	<u>N/A</u>	<u>Exploration Permit with one wellsite under C&amp;M</u>

### 1.1 Purpose

The purpose of this Environment Plan (EP) is to give practical guidance in facilitating environmental management during Operations and Maintenance activities of the Perth Basin facilities. This EP includes the assessment of environmental aspects and impacts identified associated with these O&M activities and the management and mitigation strategies for these identified aspects.

This EP has been prepared to meet the requirements of the:

- Petroleum and Geothermal Energy Resources (Environment) Regulations 2012; and
- Petroleum Pipelines (Environment) Regulations 2012.

Guidance on the EP development was provided by the Department of Mines, Industry Regulation and Safety (DMIRS) '*Guideline for the Development of Petroleum and Geothermal Environment Plans in Western Australia, November 2016*' and the '*Guidance Note – Environmental Performance Objectives, Environmental Performance Standards and Measurement Criteria for Petroleum Environment Plans.*'

### 1.2 Scope

The scope of this EP includes the day-to-day MEPAU petroleum activities undertaken in the Perth Basin Petroleum Permit areas L1, L2, L4 ~~and~~, L5 ~~and~~ EP413 as described in Section 2.0.

This EP includes all Operations and Maintenance activities associated with the Perth Basin facilities, wells, flowlines and pipelines. Decommissioning and removal of redundant infrastructure and rehabilitation on Private land is also included in the scope of this EP and managed under a Land Access Agreement (LAA) with each Landholder.

Well Intervention Activities (WIA) (including well plug and abandonment (P&A)) undertaken at Perth Basin well sites in the Petroleum Permit areas L1, L2, L4 ~~and~~, L5 and EP413 are managed in accordance with the Perth Basin WIA Environment Plan [HSE-E-075].

Decommissioning and Rehabilitation of sites within Environmentally Sensitive Areas (ESAs) or Nature Reserves (NRs) are excluded from the scope of this EP.

**1.3 Nominated Contact Details**

The nominated contact details for the EP is included in Table 1-2.

**Table 1-2 Nominated Contact Details**

Contact Details	
Name	<a href="#">Mitsui E&amp;P Australia</a>
Address	Level 11 Exchange Tower, 2 The Esplanade, Perth WA 6000
Telephone number	<a href="tel:0863644777">08 6364 4777</a>
Email address	<a href="mailto:ExternalAffairs@mepau.com.au">ExternalAffairs@mepau.com.au</a>

**2.0 DESCRIPTION OF THE ACTIVITY**

The EP includes Operations and Care and Maintenance activities (including inspection, maintenance and repair associated with the Perth Basin facilities. The EP also includes decommissioning and removal of redundant infrastructure and site reinstatement on Private land.

**2.1 Timeframe and Schedule**

Perth Basin facilities operate 24 hours/ day 7 days a week.

Decommissioning and site reinstatement activities will occur on an opportune basis and be undertaken during daylight hours.

**2.2 Activity Description**

The activities covered by the EP associated with the Perth Basin facilities include:

- Start-up and plant operations;
- Maintenance and inspection activities;
- Vehicle, machinery and equipment use;
- Chemical storage and transport;
- Groundwater extraction;

- Various environmental monitoring;
- Decommissioning and removal of redundant infrastructure including potential clearing and excavation;
- Site reinstatement; and
- Supporting activities.

Personnel managing these activities are based at the DPF.

Table 2-1 lists the corresponding location figures for the Perth Basin facilities located in Attachment 1 of this EP.

**Table 2-1 List of Location Figures**

Aspect	Location Figures <sup>1</sup>
Permit Boundaries	Attachment 1.01
Field Layouts	Attachment 1.02 Waitsia Gas Project (WGP)
	Attachment 1.03 Dongara Gas Field (DGF)
	Attachment 1.04 Hovea & Eremia Field
	Attachment 1.05 Woodada Gas Field (WGF)
	<a href="#">Attachment 1.065 Arrowsmith-02 Wellsite</a>

### 2.2.1 WGP Activities

WGP activities include:

- XPF start-up and plant operation;
- Reservoir fluid separation and gas conditioning (mercury removal);
- Transport of reservoir fluids and / or hydrocarbons via flowlines and pipelines (including conditioned gas export via the [Waitsia Export Pipeline WEP](#)-(PL124) and compound to connect the XPF to the Dampier Bunbury Natural Gas Pipeline (DBNGP));
- Transport of Produced Water along the Produced Water line from the XPF Produced Water Storage Tank to the Waitsia-02 evaporation pond;
- Reservoir fluids, hydrocarbon and/or Produced Water load out / load in, including:
  - Tanker load out of condensate (from Liquid Stock Tank);
  - Tanker load out of Produced Water (from Produced Water Storage Tank or Waitsia-02 evaporation pond);
  - Tanker load in of methanol to Methanol Tank.
- Vehicle, machinery and equipment use;
- Chemical storage and transport;
- Groundwater extraction;

<sup>1</sup> All easting and northings referenced in this document are zone 50

- Maintenance and inspection activities (including but not limited to):
  - Pigging;
  - Planned, preventative and corrective maintenance of wellheads, pipelines and flowlines (including excavation activities);
  - Equipment, site inspections, bund management;
  - Maintenance and repair of equipment;
  - Maintenance, repair and replacement of Cathodic protection (CP) system;
  - Depressurising infrastructure and maintaining low pressure blanket gas to ensure that vessels, tanks and pipework are preserved (until wells are shut-in, suspended or decommissioned);
  - Clean-out and flushing of hydrocarbon containing infrastructure including pipelines, flowlines, separators and tanks;
  - Maintenance of firebreaks and cleared areas;
  - Weed and vegetation management and monitoring;
  - Chemical and waste management;
  - General housekeeping;
- Progressive removal and backfill of mud sumps, turkey's nest and flare pits;
- Various environmental monitoring (including groundwater and surface water sampling).

### 2.2.2 DGF Activities

DGF activities include:

- Condensate Storage and Loading System – Reservoir fluids, hydrocarbon and/or Produced Water load out / load in, including:
  - Tanker load in of condensate to DPF tanks for storage;
  - Tanker load out of condensate from DPF tanks for transport offsite;
  - Tanker load in of Produced Water to the DPF Water Treatment System;
- Wastewater treatment, storage and disposal<sup>2</sup>;
- Comingled Waste Water Treatment System maintenance (including down hole scale clean);
- Office and workshop activities;
- Control Room – Process variables and alarms from gas and water production are monitored by the YOKOGAWA Control System located in the Control Room. It is monitoring system only; where required adjustments are completed manually;
- Ground water extraction;
- Waste storage and chemical management;

---

<sup>2</sup> The Dongara Water Disposal Well (WDW) is 600 m in depth and extends into formations that are below the superficial and Yaragadee Aquifer.

- Vehicle, machinery and equipment use and storage;
- Maintenance and inspection activities (including but not limited to):
  - Planned, preventative and corrective maintenance of wellheads, pipelines and flowlines (including excavation activities);
  - Equipment, site inspections, bund management;
  - Maintenance and repair of equipment;
  - Depressurising infrastructure and maintaining low pressure blanket gas to ensure that tanks and pipework are preserved (until wells are shut-in, suspended or decommissioned);
  - Clean-out and flushing of hydrocarbon containing infrastructure including pipelines, flowlines, pig launcher/receiver, separators and tanks;
  - Maintenance of firebreaks and cleared areas;
  - General housekeeping;
  - Weed and vegetation management and monitoring; and
- Various environmental monitoring (including groundwater and surface water sampling).

### **2.2.3 Hovea and Eremia Oil Field Activities**

Hovea and Eremia Oil Field activities include:

- Tanker load in / out of Produced Water and other wastewater;
- Wastewater treatment storage and disposal<sup>3</sup>;
- Chemical storage and transport;
- Lay down / storage areas for machinery and equipment;
- Vehicle, machinery and equipment use;
- Maintenance and inspection activities (including but not limited to):
  - Planned, preventative and corrective maintenance of wellheads, pipework and flowlines (including excavation activities);
  - Equipment, site inspections, bund management;
  - Maintenance and repair of equipment;
  - Depressurising infrastructure and maintaining low pressure blanket gas to ensure that flowlines and pipework are preserved (until wells are shut-in, suspended or decommissioned);
  - General housekeeping;
  - Weed and vegetation management and monitoring;
  - Maintenance of firebreaks and cleared areas; and

---

<sup>3</sup> Eremia-04 WDW is 2200 m in depth and extends into formations that are below the superficial and Yaragadee Aquifer.

- Various environmental monitoring (including groundwater and surface water sampling).

#### 2.2.4 WGF Activities

WGF activities include:

- Vehicle, machinery and equipment use;
- Maintenance and inspection activities (including but not limited to):
  - Planned, preventative and corrective maintenance of wellheads, pipelines and flowlines (including excavation activities);
  - Equipment, site inspections, checks;
  - Depressurising infrastructure and maintaining low pressure blanket gas to ensure that pipelines and flowlines are preserved (until wells are shut-in, suspended or decommissioned);
  - Clean-out and flushing of hydrocarbon containing infrastructure including pipelines and flowlines;
  - General housekeeping;
  - Weed and vegetation management and monitoring;
  - Maintenance of firebreaks and cleared areas; and
- Various environmental monitoring (including groundwater and surface water sampling).

#### 2.2.5 Arrowsmith-02 Wellsite Activities

Arrowsmith activities include:

- Vehicle, machinery and equipment use;
- Maintenance and inspection activities (including but not limited to):
  - Planned, preventative and corrective maintenance of wellheads (including excavation activities);
  - Site inspections;
  - General housekeeping;
  - Weed and vegetation management and monitoring;
  - Maintenance of firebreaks and cleared areas; and
- Removal and backfill of mud sump, ponds and flare pit; and
- Various environmental monitoring (including groundwater and surface water sampling).

#### 2.3 Decommissioning and Site Reinstatement

For C&M facilities, flowlines, pipelines and well sites within private land, decommissioning and removal of redundant infrastructure will be conducted under this EP. On private land (i.e. agricultural) the completion criteria in line with this EP, is developed in consultation with the landowner and LAA or a subsequent amendment. MEPAUs baseline is to remove all

infrastructure and return the land to its previous state, unless an alternative agreement with the landowner is arranged. In general, completion criteria cover the following aspects:

- Improvements (i.e. fencing, access roads, water bores or well pads to remain);
- Decommissioning and removal of all redundant infrastructure and waste to a licenced waste facility;
- Landform recontouring;
- Topsoil and revegetation; and
- Environmental monitoring.

#### **2.4 Chemical Disclosure**

DMIRS set out the requirements for chemical disclosure within the *Chemical Disclosure Guideline* (August 2013). The guideline details the chemical disclosure requirements for products, additives, chemicals and other substances used for the purpose of drilling undertaken in the course of any petroleum or geothermal related activities regulated under regulation 15(9) of the *Petroleum and Geothermal Energy Resources (Environment) Regulations 2012*.

The proposed chemicals are outlined within Attachment 2 and 3.

### 3.0 DESCRIPTION OF THE ENVIRONMENT

A description of the Environment in the Perth Basin Region is included in Table 3-1.

**Table 3-1 Perth Basin Description of the Environment Summary**

Aspect	Shire of Irwin (L1/L2, EP413)	Shire of Carnamah / Shire of Coorow (L4/L5)
Climate	The Bureau of Meteorology (BoM) Geraldton Station (008050) is the closest weather station to the town of Dongara. The region has a Mediterranean-type climate characterised by seasonal patterns of hot, dry summers and mild, wet winters. The area is subject to high wind speeds, dust storms, lightning storms, high summer temperatures and low winter night temperatures <sup>4</sup> .	
Soil	Soils within the Perth Basin are light and sandy and well drained. The soils consist of calcareous and siliceous sand underlain by aeolianite, which is often exposed. The Perth Basin is situated entirely within the Geraldton Sandplains Biogeographical Region <sup>5</sup> .	
Topography	The area consists of gentle slopes associated with the coastal sand plain and dune systems within the area.	
Surface Water	The Irwin River is the major coordinated drainage for the L1/L2 permit. There are a number of swamps surrounded by dense scrub, frequent limestone outcrops and the occasional laterite outcrop including Ejarno Spring adjacent to the XPF (500 m) and Zeus Wetlands.	Surface water includes Lake Logue, Eneabba Creek & Stockyard Gully.
Groundwater	The sub-surface geology of the Perth Basin consists of the Late Jurassic Yarragadee Formation, which is overlain by Tertiary Sediments <sup>6</sup> . Ground water flow direction generally westward. Ejarno Spring is a surface expression of groundwater.	Ground water flow direction generally westward. Groundwater at WGF is near or at the surface in the lakes and low-lying areas.
Acid Sulphate Soils	Information sourced from the Australian Soil Resource Information System indicates that the areas around the Perth Basin Activities are located within an area where acid sulphate soils are not known to occur L1/L2.	Information sourced from the Australian Soil Resource Information System indicates that the areas around the Perth Basin Activities are located within an area where acid sulphate soils are of low possibility L4/L5 <sup>7</sup> .
Matters of National Environmental Significance	An EPBC search showed there is 1 National Heritage Place and 1 Listed Threatened Ecological Community (both outside Perth Basin activity boundaries) and 73 listed threatened species and 40 listed migratory species within the wider study area protected by the Environmental Protection and Biodiversity Conservation Act 1999 <sup>6</sup> .	
Conservation Areas	Significant conservation areas within the Perth Basin region include recommended Red Book reserves, DBCA reserves, nature reserves and riparian vegetation. The locations of these environmental sensitivities are shown in Figure 3-1 to Figure 3-2. The nearest Conservation Area is Yandanogo Nature Reserve located approximately 2.5 km from the Perth Basin <sup>7</sup> .	Significant conservation areas within the Perth Basin region include recommended Red Book reserves, DBCA reserves, nature reserves and riparian vegetation. The locations of these environmental sensitivities are shown in Figure 3-3. WGF is within Lake Logue Nature Reserve (an ESA).
Environmentally Sensitive Areas (ESAs)	<del>Arrowsmith is located within the Arrowsmith Lakes ESA. The nearest ESA as declared under the Environmental Protection (Clearing of Native Vegetation) Regulations 2004 is Zues Wetland 4 km from the Perth Basin<sup>8</sup>.</del>	The nearest ESA as declared under the Environmental Protection (Clearing of Native Vegetation) Regulations 2004 is Lake Logue Nature Reserve which is WGF are within. Beekeepers Nature Reserve is located 1 km west of the WGF.
Groundwater Dependent Ecosystems (GDEs)	The nearest GDE is located 440 m southeast of the XPF along the margins of the Ejarno Spring.	Area to the west and north of WGF is listed as low potential GDE.
Vegetation Communities & Flora	The wider area is primarily private property with patchy remnant vegetation. The remnant vegetation is mainly heath and shrublands on sand over limestone, with scattered trees and some limestone exposures.	The vegetation in the western and northern half of permit areas L4 and L5 is either reserved for conservation or is vegetated and proposed as conservation reserve.
Weeds	Weeds are widespread across the Perth Basin, particularly within disturbed areas. A total of 17 weeds were recorded in the wider area, including the declared weed <i>Echium plantagineum</i> (Patterson's Curse) <sup>9</sup> .	Small infestations of introduced species on existing well pads at WGF; eradication program in place.

<sup>4</sup> Bureau of Meteorology, 2020

<sup>5</sup> Beard, 1976

<sup>6</sup> Department of the Environment and Energy, EPBC Act Protected Matters Search Tool, 2019

<sup>7</sup> Department of Biodiversity, Conservation and Attractions, 2019

<sup>8</sup> ~~Department of Water and Environmental Regulation, 2019~~

<sup>9</sup> EPBC Act 1999 Weeds of National Significance Search tool, 2019

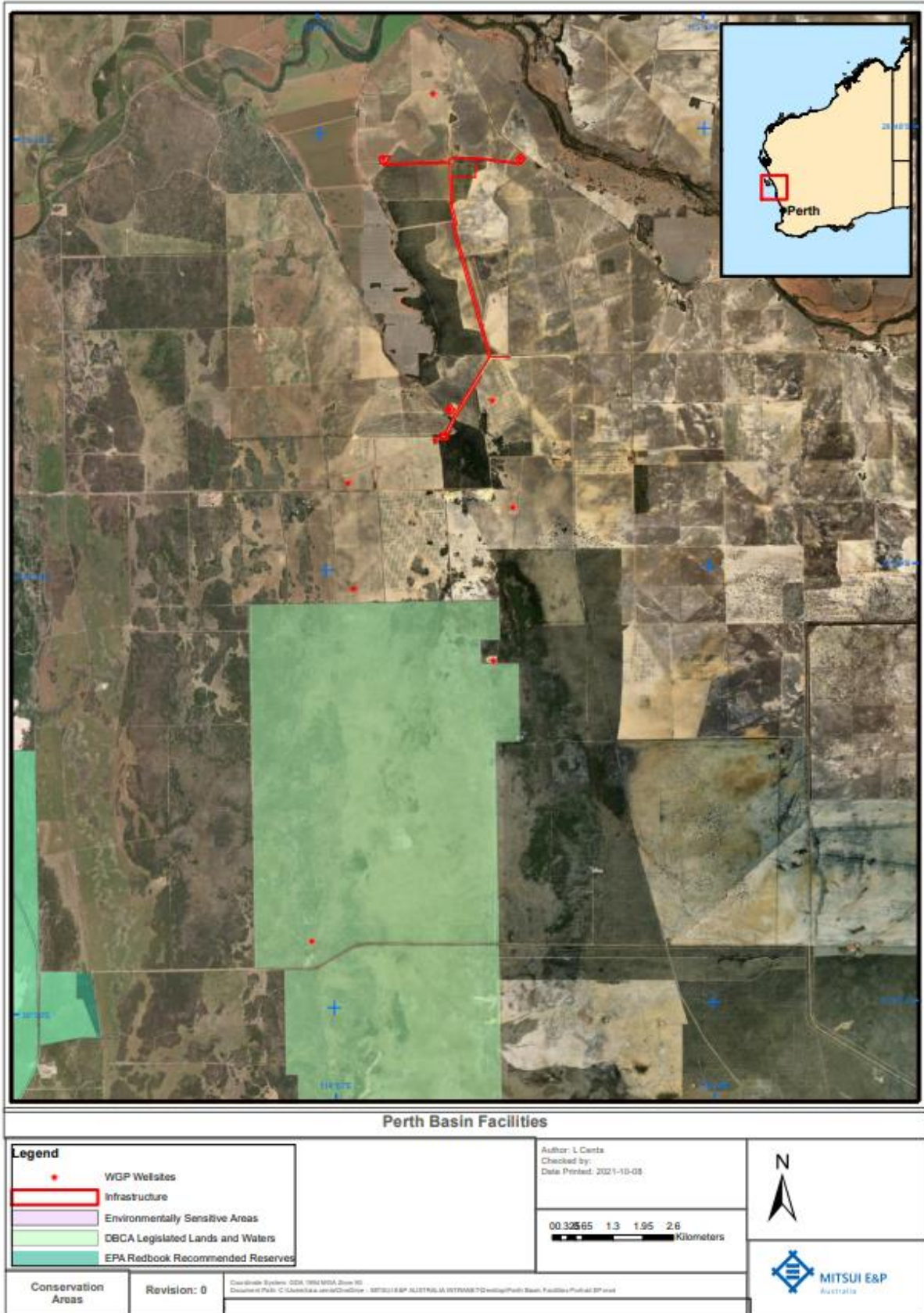
Aspect	Shire of Irwin (L1/L2, <a href="#">EP413</a> )	Shire of Carnamah / Shire of Coorow (L4/L5)
Dieback	Phytophthora Dieback is not known to occur within the area and unlikely to occur due to calcareous soils within the wider area <sup>10</sup> . The nearest reported dieback infestation identified within the wider study area is located approximately 60 km south of the Perth Basin <sup>11</sup> .	WGF has known infestations of dieback predominantly associated with the lakes and creeks in the area.
Fauna	Predominantly introduced mammals (stock, rabbits and foxes) and native animals (reptiles and kangaroos).	Kangaroos, emus, echidnas, reptiles and native birds known to occur at WGF.
Aboriginal Heritage	Based on previous field and desktop surveys, three listed Aboriginal Sites relevant to the Wider Study Area have been identified – Registered Aboriginal Site Numbers 5482 (“Jenkins Hut Valley”), 5917 (“Irwin Park Station”), and 18907 (“Irwin River”) <sup>12</sup> and Waitsia-03 significant tree.	The lakes in the Eneabba area have been identified as significant to aboriginal people.
European Heritage	No aspects of European heritage at risk of impact from Perth Basin facilities operations.	No aspects of European heritage at risk of impact from Perth Basin facilities operations.
Socio-economic Environment	There are several individual farmhouses located within approximately 5 km of the activity area both to the west and east <sup>13</sup> . Other stakeholders within the area include the Mondarra Gas Storage Facility and the Asco Camp and Asco Laydown Yard, both on Pye Road	Socio-economic environment predominantly consists of mining and tourism.

<sup>10</sup> Department of Parks and Wildlife, 2015

<sup>11</sup> Glevan Consulting, 2012

<sup>12</sup> Department of Planning, Lands and Heritage, Aboriginal Heritage Inquiry System, 2019

<sup>13</sup> Google Earth, 2019



**Figure 3-1 WGP – HPF – Eremia – XAGGS Environmental Sensitivities**





#### 4.0 ENVIRONMENTAL RISK ASSESSMENT AND MANAGEMENT

Environmental risk assessments have been undertaken for the for the activities documented in this EP. Hazards and their associated aspects and their associated management and mitigation measures are detailed bellow in Table 4-1.

**Table 4-1 Risk Assessment Outcome Summary**

Aspect	Hazard	Management and Mitigation Measures
<b>Ground and Vegetation Disturbance</b>	<ul style="list-style-type: none"> <li>• Spread of non-indigenous species (weed / pathogens);</li> <li>• Dust generation causing smothering of vegetation or impacts to landowners;</li> <li>• Damage to heritage sites / artefacts;</li> <li>• Unplanned disturbance to vegetation and fauna habitat; and</li> <li>• Inadequate site reinstatement</li> </ul>	<ul style="list-style-type: none"> <li>• MEPAU Induction;</li> <li>• Permit to Work;</li> <li>• Clearing Vegetation Procedure and Record Form;</li> <li>• Weed and Dieback Hygiene Work Instruction;</li> <li>• Weed and Vegetation Management Plan;</li> <li>• Topsoil and vegetation material management;</li> <li>• Construction fill verified as having low weed / dieback risk;</li> <li>• Dieback Monitoring Program;</li> <li>• Monitoring of areas to be reinstated;</li> <li>• Complaints management system</li> <li>• Indigenous Heritage Survey; and</li> <li>• Heritage artefact identification requirements.</li> </ul>
<b>Fire</b>	<ul style="list-style-type: none"> <li>• Habitat and vegetation loss, fauna injury / fatality, or contamination (in the event petroleum facilities are damaged).</li> </ul>	<ul style="list-style-type: none"> <li>• Firebreaks around facilities;</li> <li>• Permit to Work;</li> <li>• Perth Basin Emergency Response Plan (ERP);</li> <li>• Department of Fire and Emergency Services (DFES) notifications;</li> <li>• Designated smoking areas; and</li> <li>• Remote monitoring capability for unmanned facilities.</li> </ul>
<b>Air Emissions</b>	<ul style="list-style-type: none"> <li>• Disturbance to sensitive fauna / relevant stakeholders.</li> </ul>	<ul style="list-style-type: none"> <li>• Computerised Maintenance Management System Maintenance;</li> <li>• Emissions are monitored and Reported;</li> <li>• National Pollutant Inventory Reporting;</li> <li>• NGER reporting; and</li> <li>• Complaints Management System.</li> </ul>
<b>Noise Emissions</b>	<ul style="list-style-type: none"> <li>• Disturbance to sensitive fauna / relevant stakeholders.</li> </ul>	<ul style="list-style-type: none"> <li>• Complaints Management System;</li> <li>• Noise monitoring if a change to routine inspections; and</li> <li>• Ongoing stakeholder consultation.</li> </ul>

Aspect	Hazard	Management and Mitigation Measures
<b>Physical Interaction with Fauna</b>	<ul style="list-style-type: none"> <li>• Death or injury to fauna</li> </ul>	<ul style="list-style-type: none"> <li>• Fauna management requirements;</li> <li>• Fauna exclusion and egress;</li> <li>• Reduced Speed Limits; and</li> <li>• Established roads and access tracks.</li> </ul>
<b>Surface Water Run-off</b>	<ul style="list-style-type: none"> <li>• Erosion or contamination of soil causing adverse effects on native vegetation.</li> </ul>	<ul style="list-style-type: none"> <li>• Evaporation pond (including turkey nest) design and inspections;</li> <li>• Removal of stormwater from concrete bunds; and</li> <li>• Surveillance Sampling Program.</li> </ul>
<b>Extraction of Groundwater</b>	<ul style="list-style-type: none"> <li>• Damage to vegetation due to drawdown of shallow groundwater</li> </ul>	<ul style="list-style-type: none"> <li>• Ground water licenses;</li> <li>• Surveillance Sampling Program; and</li> <li>• Meter calibration and monitoring.</li> </ul>
<b>Planned Discharge – Produced Water and Comingled Wastewater</b>	<ul style="list-style-type: none"> <li>• Contamination of soil and water causing adverse effects on native vegetation and wildlife.</li> </ul>	<ul style="list-style-type: none"> <li>• Chemical disclosure;</li> <li>• Limited oil in water concentration;</li> <li>• DWER Part V License Requirements;</li> <li>• Surveillance Sampling Program; and</li> <li>• Planned discharges are monitoring and reported.</li> </ul>
<b>Waste</b>	<ul style="list-style-type: none"> <li>• Attraction and / or injury of protected fauna species within the vicinity of the facilities; and</li> <li>• Incorrect storage, handling and disposal of site waste materials (including hazardous waste).</li> </ul>	<ul style="list-style-type: none"> <li>• Waste Management Plan;</li> <li>• Fauna Management Plan;</li> <li>• Mud Sump, Turkey’s Nest and Flare Pit Removal and Soil Validation; and</li> <li>• Surveillance Sampling Program.</li> </ul>
<b>Accidental Release – Asset Integrity</b>	<ul style="list-style-type: none"> <li>• Contamination of soil / groundwater; and</li> <li>• Contamination and subsequent toxic effects to vegetation and fauna.</li> </ul>	<ul style="list-style-type: none"> <li>• Well Management Plan;</li> <li>• DWER Part V license requirements;</li> <li>• Safety Management System;</li> <li>• Bulk Tank Certification;</li> <li>• Chemical and Hazardous Material Management Plan;</li> <li>• Workplace Inspections;</li> <li>• Evaporation pond (including turkey nest) design;</li> <li>• Evaporation pond inspections;</li> <li>• Computerised Maintenance Management System Maintenance;</li> <li>• Decommissioning of infrastructure on Private land;</li> <li>• Groundwater monitoring;</li> </ul>

Aspect	Hazard	Management and Mitigation Measures
		<ul style="list-style-type: none"> <li>• Validation soil assessment;</li> <li>• Surveillance Sampling Program;</li> <li>• Remote monitoring capability for unmanned facilities;</li> <li>• Perth Basin ERP;</li> <li>• Perth Basin Oil Spill Contingency Plan (OSCP);</li> <li>• Well exclusion barriers; and</li> <li>• Well Control Master Service Agreement.</li> </ul>
<b>Accidental Release – Chemical and Hazardous Material Handling, Storage and Use</b>	<ul style="list-style-type: none"> <li>• Contamination of soil / groundwater.</li> </ul>	<ul style="list-style-type: none"> <li>• Chemical and Hazardous Material Management Plan;</li> <li>• Transport of Dangerous Goods Evaporation pond inspections;</li> <li>• Bulk Transfer Procedure;</li> <li>• Workplace Inspections;</li> <li>• Surveillance Sampling Program;</li> <li>• Perth Basin ERP; and</li> <li>• Perth Basin OSCP.</li> </ul>
<b>Accidental Release – Hydrocarbon release During Transfer</b>	<ul style="list-style-type: none"> <li>• Contamination of soil / groundwater.</li> </ul>	<ul style="list-style-type: none"> <li>• Bulk Transfer Procedure;</li> <li>• Chemical Injection Operation and Refilling Procedure;</li> <li>• Refuelling process;</li> <li>• Computerised Maintenance Management System Maintenance;</li> <li>• Surveillance Sampling Program;</li> <li>• Perth Basin ERP; and</li> <li>• Perth Basin OSCP.</li> </ul>

## 5.0 IMPLEMENTATION STRATEGY

To meet the requirements of Regulation 15(1) of the PGER(E)R, the EP describes the systems, practices, and procedures used to ensure that the environmental impacts and risks of the activities are continuously reduced to as low as reasonably practicable (ALARP), and the environmental performance objectives and standards detailed in the EP are achieved.

### 5.1 Management System Overview

#### 5.1.1 Documentation Hierarchy

MEPAU’s HSE Management System (HSEMS) is hierarchal in nature, with the key levels of documentation shown below in Figure 5-1.



**Figure 5-1 HSEMS Documentation Hierarchy**

The HSEMS establishes clear guidelines for personnel involved in this activity to achieve and maintain the standards set out in this EP.

**5.1.2 Corporate HSE Elements**

The objectives of the HSE Elements are to:

- Establish and formalise expectations for the progressive development and implementation of more specific requirements within each MEPAU business unit;
- Provide auditable criteria against which the HSEMS can be measured; and
- Provide a basis from which to drive continual improvement.

The 15 HSE Elements are listed below in Table 5-1. Those elements that are applicable for managing the environmental impacts and risks arising from activities covered under this plan are described further below.

**Table 5-1 HSE Elements**

HSE Element Number	Element Name	Relevant to support environmental management of this Activity
1	Leadership and Responsibility	☒
2	Hazard Identification and Risk Management	☒
3	Compliance	☒
4	Workforce Training and Competency	☒

HSE Element Number	Element Name	Relevant to support environmental management of this Activity
5	Workforce Involvement and Stakeholder Engagement	<input checked="" type="checkbox"/>
6	Design, Construction, Commissioning and Decommissioning	<input type="checkbox"/>
7	Operations Management	<input type="checkbox"/>
8	Asset Integrity Management	<input type="checkbox"/>
9	Management of Contractors and Materials	<input checked="" type="checkbox"/>
10	Occupational Health and Wellbeing	<input type="checkbox"/>
11	Management of Change	<input checked="" type="checkbox"/>
12	Incident Reporting and Investigation	<input checked="" type="checkbox"/>
13	Emergency Preparedness and Response	<input checked="" type="checkbox"/>
14	Information Management and Document Control	<input checked="" type="checkbox"/>
15	Audit, Assessment and Review	<input checked="" type="checkbox"/>

### 5.1.3 Systems, Practices and Procedures

Details of MEPAU systems, practices and procedures relating to the management of all potential impacts and risks of the activity are detailed in Table 5-2. The objective of these are to continuously reduce the potential impacts and risks of the activity to ALARP.

**Table 5-2 Systems, Practices and Procedures**

Item	Objective to achieve ALARP	Document Name
Code of Practice for MEPAU sites	To outline the main HSE criteria to be observed by MEPAU and its contractors	MEPAU Health, Safety & Environment Policy [MEP HSE-POL-001]
Environment Plan	To document environmental management of operations	Perth Basin Facilities EP [PB-HSE-PLN-00004]
HSE Management System (HSEMS)	The HSEMS establishes clear guidelines for personnel involved in this activity to achieve and maintain the standards set out in this EP	Refer to Table 5-1
Oil Spill Preparedness and Response	To provide guidance on the management of a spill	Perth Basin OSCP [PB-HSE-PLN-00009]
Emergency Response Plan	To provide guidance on the management of an emergency situation	Perth Basin ERP [PB-OPS-PLN-00007]

Item	Objective to achieve ALARP	Document Name
Permit to Work System	To ensure facilities are in a safe and environmentally acceptable condition before works starts and is kept in this condition until all personnel involved in the work have signed off completion	PTW Procedure [PB-OPS-PRO-00001]
Hazard and Incident Reporting	To outline the processes and requirements for hazard and incident reporting	Hazard and Incident Reporting Procedure [PB-HSE-PRO-00006]
Environmental Compliance Scheduling	To prompt environmental compliance requirements (reporting, auditing, licence renewal, document update)	INX InForm
Chemical and Hazardous Material Management	To provide guidance to ensure that MEPAU reduce and manage the health, safety or environmental risk or loss of amenity arising from the procurement, transport, storage and use of chemicals, hazardous materials and dangerous goods at all Perth Basin facilities.	Chemical and Hazardous Material Management Plan [PB-HSE-PLN-00003] and Approvals Procedure [PB-HSE-PRO-00020]
Construction Fill Risk Assessment	To guide and document the conditions, approval and details of clearing activities to ensure compliance with clearing permits and legislation as required	
Hygiene Management	To document the completion of hygiene inspections for personnel entrance into LLNR	Weed and Dieback Hygiene Work Instruction [PB-HSE-PLN-012-WIS-001], Vehicle / Equipment Hygiene Inspection Check [PB-HSE-FRM-00018] and Vehicle / Equipment Inspection Check Sheet [PB-HSE-FRM-00002]
Vegetation Clearing	To guide and document the conditions, approval and details of clearing activities to ensure compliance with clearing permits and legislation	Clearing Vegetation Procedure [PB-HSE-PRO-00010]
Sampling Surveillance Program	Outline groundwater and surface water monitoring program with guidance for compliance with WGP EP commitments	Surveillance Sampling Program [PB-HSE-PRO-119]
Waste Management	To provide guidance on the management of waste at Perth Basin facilities	Waste Management Plan [PB-HSE-PLN-00001]
Well Management	To document management of well operations	Well Management Plan
Routine HSE Inspections	A practice that provides regular assurance verification regarding HSE compliance with legislation, and company policies and procedures	Monthly HSE Inspection Checklist

Item	Objective to achieve ALARP	Document Name
Preventative Maintenance Management	To provide a preventative maintenance management tool that stores records, schedules maintenance and documents activities undertaken	Computerised Maintenance Management System
Training Management	To provide the framework for all personnel to have the competency for their respective roles for the management of safety and environmentally critical risks and daily work activities	Training Management Plan [PB-OPS-TRN-013]
Landowner Communications	To guide all personnel working at MEPAU owned assets on interactions with landowners (including tenants and staff)	Landowner Communication Procedure [HSE-PR-059]
Stakeholder Engagement	To provide guidance on how MEPAU personnel interact with stakeholders	MEPAU Stakeholder Engagement Framework [MEP-EXA-GDL-001]
Audit Management	To plan and document the independent examination and verification of activities, records, processes, and other elements to determine conformity to documented requirements and standards	MEPAU Annual Audit Schedule

## 5.2 Environment Plan Review

Regulation 18 of the PGER(E)R requires that MEPAU submit a proposed revision of the accepted EP:

- Before the commencement of a new activity, or any significant modification, change of a new stage of an existing activity; or
- Before, or as soon as practicable after, the occurrence of any significant new environmental impact or risk, or significant increase in an existing environmental impact or risk which occurred or is to occur.

Additionally, Regulation 20 of PGER(E)R requires that MEPAU submit a proposed revision of this EP five years from the date when this EP is accepted by the Minister.

## 6.0 CONSULTATION

MEPAU are committed to stakeholder engagement and their commitment is documented in their MEPAU Stakeholder Engagement Framework [MEP-EXA-GDL-001] which includes:

- Stakeholder identification, analysis and mapping prior to the start of any company activity;
- Mobilise resources, build capacity and identify and prepare for stakeholder risks;
- Ensure that stakeholders are invited to participate with reasonable time to respond and that communications are appropriate for each stakeholder; and

- Monitor and evaluate stakeholder engagement to improve future engagements and business performance.

MEPAU maintains a database of stakeholder communication and are committed to ongoing consultation and open dialogue with key stakeholders for the duration of the project. In addition to direct engagement. MEPAU hosts a Mid-West website ([www.mitsuiepmidwest.com.au](http://www.mitsuiepmidwest.com.au)) that includes project specific pages, blogs, a feedback form and hyperlinks to other websites. The website provides an additional method for MEPAU to communicate with stakeholders on a continuing basis.

In accordance with Regulation 17 of PGER(E)R, MEPAU completed a scoping exercise to determine which authorities, persons and organisations were considered to be relevant for the activities covered under this EP. As the assets are located in regional areas and distant from any town sites, the following stakeholders were identified and include:

- Landowners of the properties where the assets are located, and adjacent to them;
- Local government (Shires of Irwin and Carnamah);
- DMIRS, DWER and DBCA; and
- Southern Yamatji people (Traditional Landowners); and
- Joint Venture Partner – Beach Energy.

## **6.1 Ongoing Consultation**

In accordance with Regulation 15(11) the implementation strategy must provide for appropriate consultation with relevant authorities and other relevant interested persons or organisations.

MEPAU will continue to consult with relevant stakeholders throughout the course of this EP. MEPAU will specifically engage and consult with relevant stakeholders on a frequency at their request.

However, based upon the nature and scale of the Operations, and as no specific triggers or frequency for updates have been requested to date, MEPAU plan to keep stakeholders informed through the wider MEPAU engagement process, and ongoing consultation with landowners where required as part of Land Access Agreements.

## **7.0 REFERENCES**

Bamford M. J., and A. R. Consulting Ecologists (2015), Waitsia Wells, Dongara Fauna Assessment

Beard, J.S., (1976). The Vegetation of the Dongara Area Western Australia. Map and explanatory memo 1:250 000 series. Vegmap Publications, Perth

Bureau of Meteorology (2019). Maps of average conditions, Bureau of Meteorology, Australian Government

Department of Biodiversity, Conservation and Attractions, (2019). NatureMap. Department of Conservation, Biodiversity and Attractions, Government of Western Australia

Department of the Environment and Energy. 2019. EPBC Act Protected Matters Search Tool, 2019

Department of Parks and Wildlife (2015). Corporate policy statement No. 3 Management of *Phytophthora* Disease. Department of Parks and Wildlife, Government of Western Australia

Department of Planning, Lands and Heritage (2019). Aboriginal heritage inquiry system, Department of Planning, Lands and Heritage, Government of Western Australia, Perth.

Department of Water (2017). Northern Perth Basin: Geology, hydrology and groundwater resources, Hydrogeological bulletin series, report no. HB1, Department of Water, Government of Western Australia, Perth

Department of Water and Environmental Regulation (2019). Clearing Permit System Map, Government of Western Australia

EPBC Act 1999. 2019. Weeds of National Significance Search tool

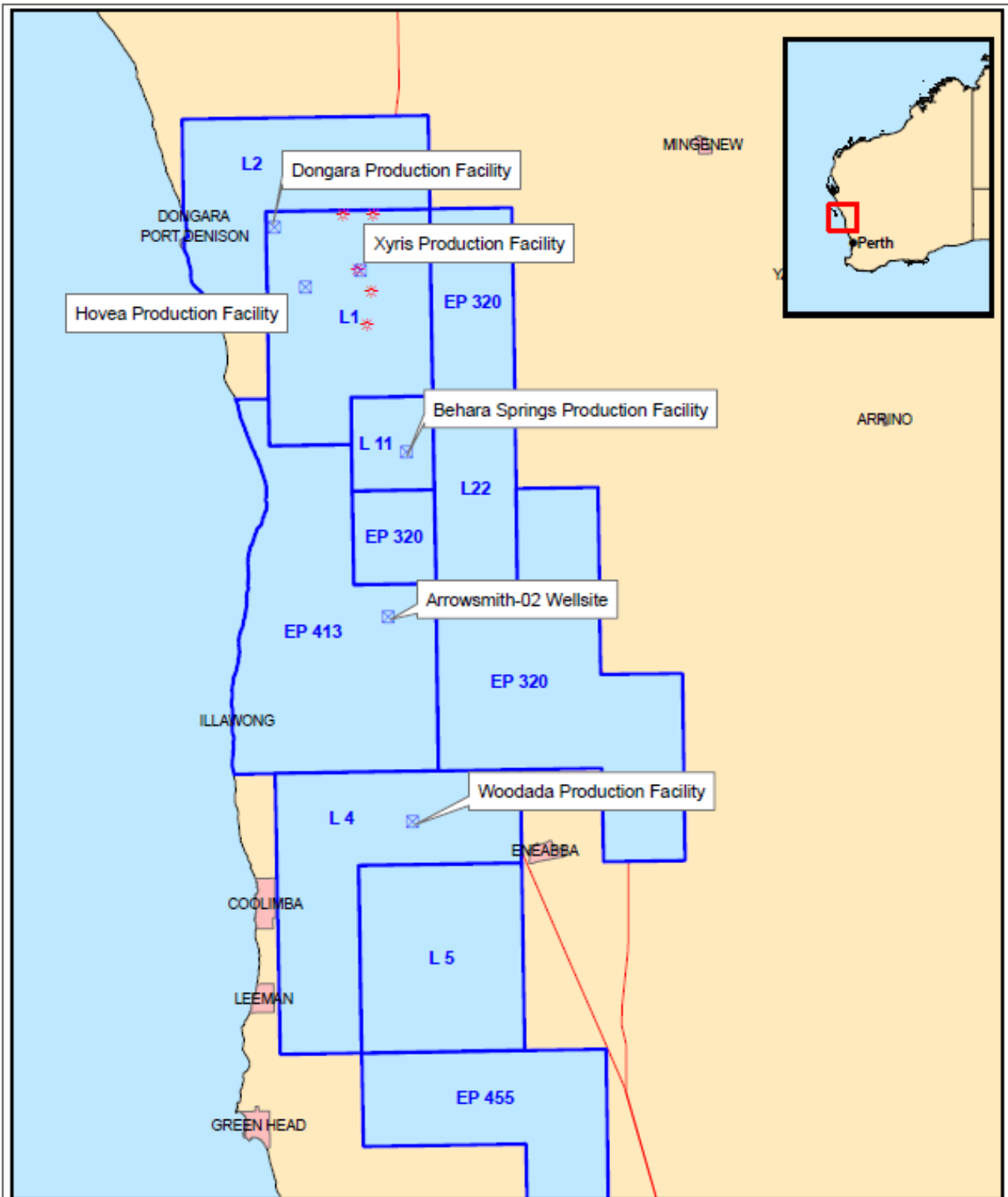
Glevan Consulting (2012). Access tracks to wells and infrastructure at Woodada gas fields – *Phytophthora cinnamomi* occurrence and assessment. Unpublished report (Document No.: V1) for AWE Ltd, March 2012

.

## **ATTACHMENTS**

**ATTACHMENT 1**  
**PERTH BASIN LOCATION FIGURES**

ATTACHMENT 1.01 PERMIT BOUNDARIES



Perth Basin

Legend

-  Perth Basin Facilities
-  Waitisia Project Wells
-  AWE WA Permits

Author: L. Centa  
 Checked by:  
 Date Printed: 2021-11-03

0 1.5 3 6 9 12 Kilometers

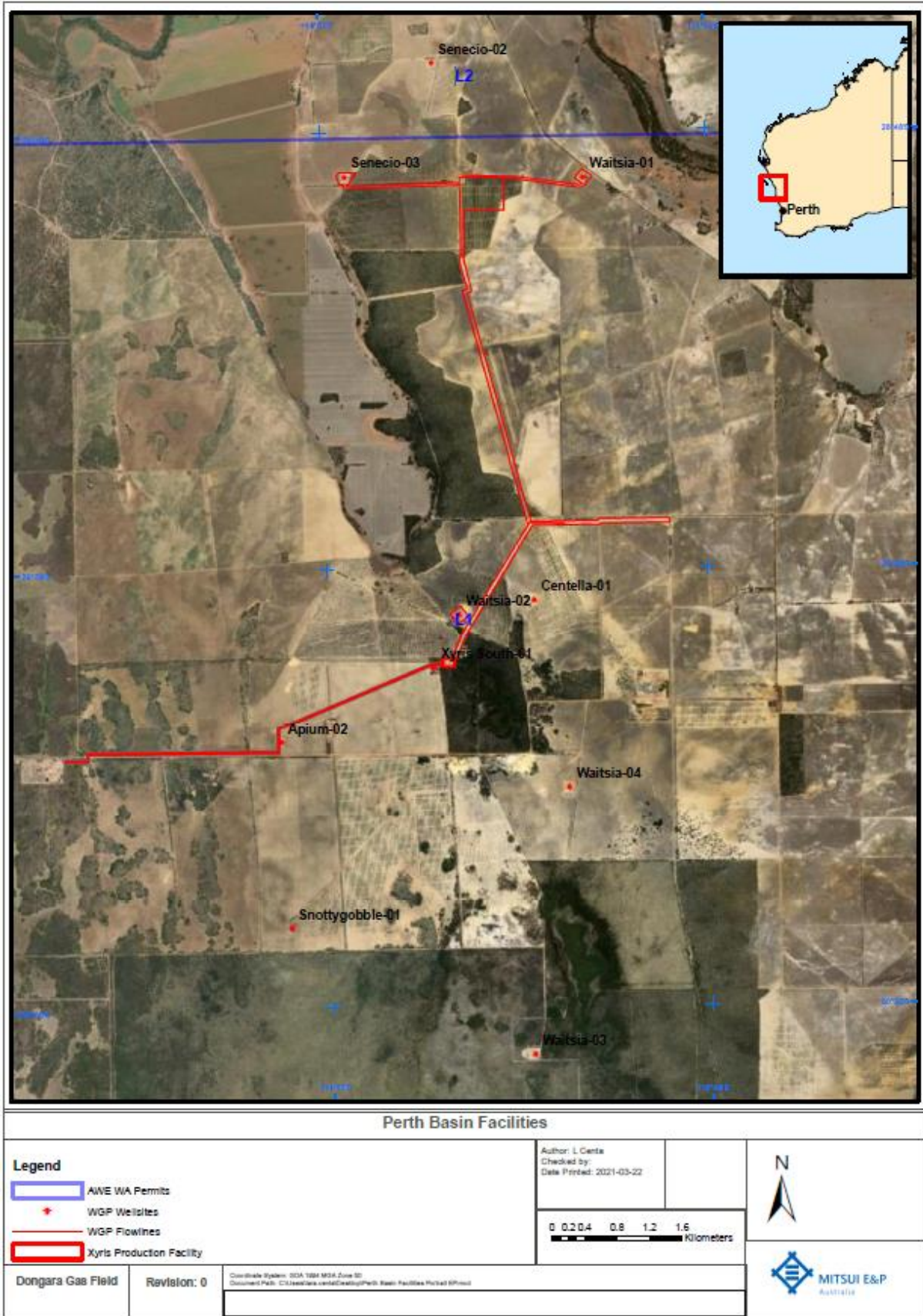


Permit Areas

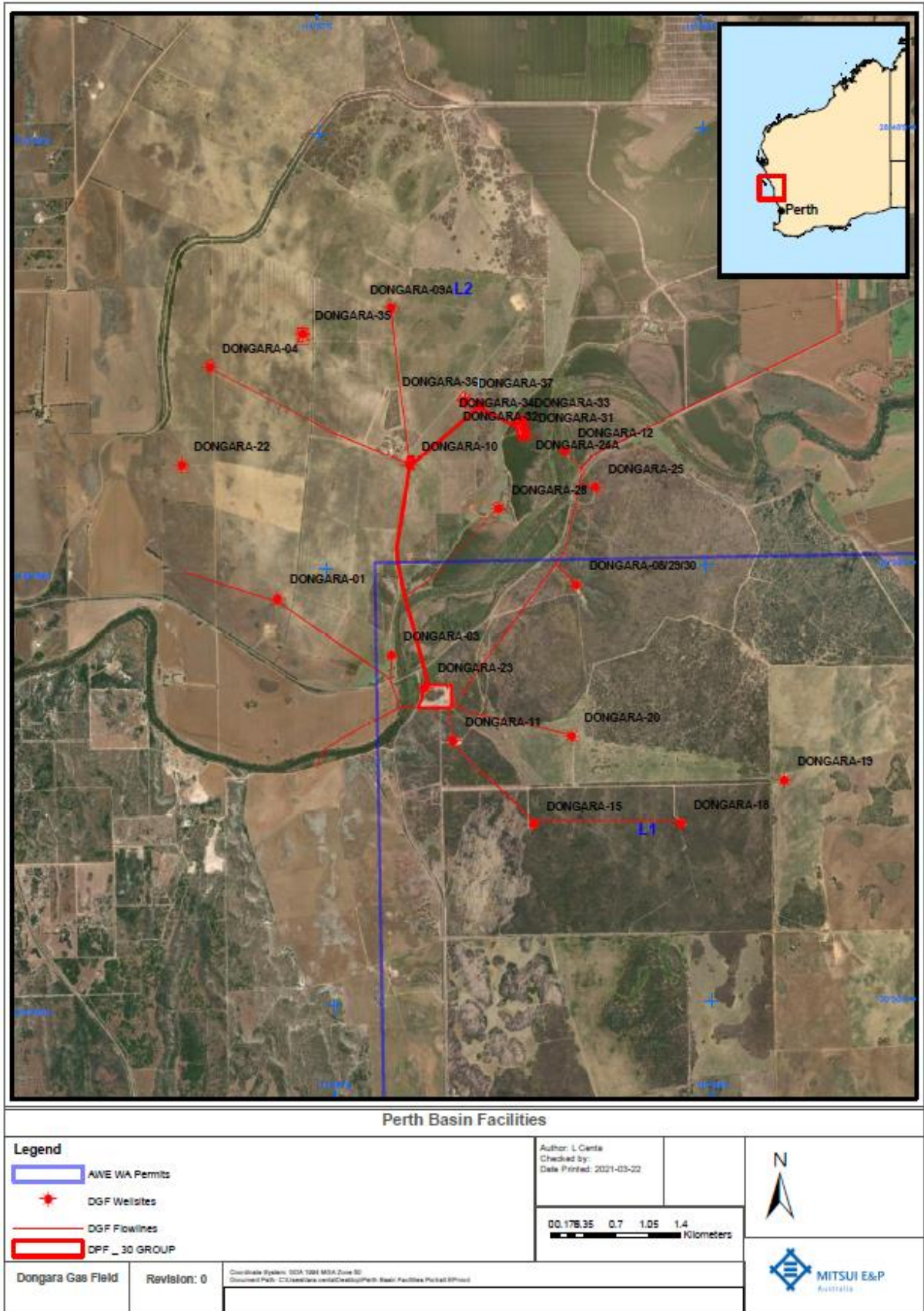
Revision: 0

Coordinate System: GDA 1984 MGA Zone 52  
 Document Path: C:\Users\lcenta\OneDrive - MITSUI E&P AUSTRALIA\STRAWNET\Desktop\Perth Basin Facilities Portal\EPsum

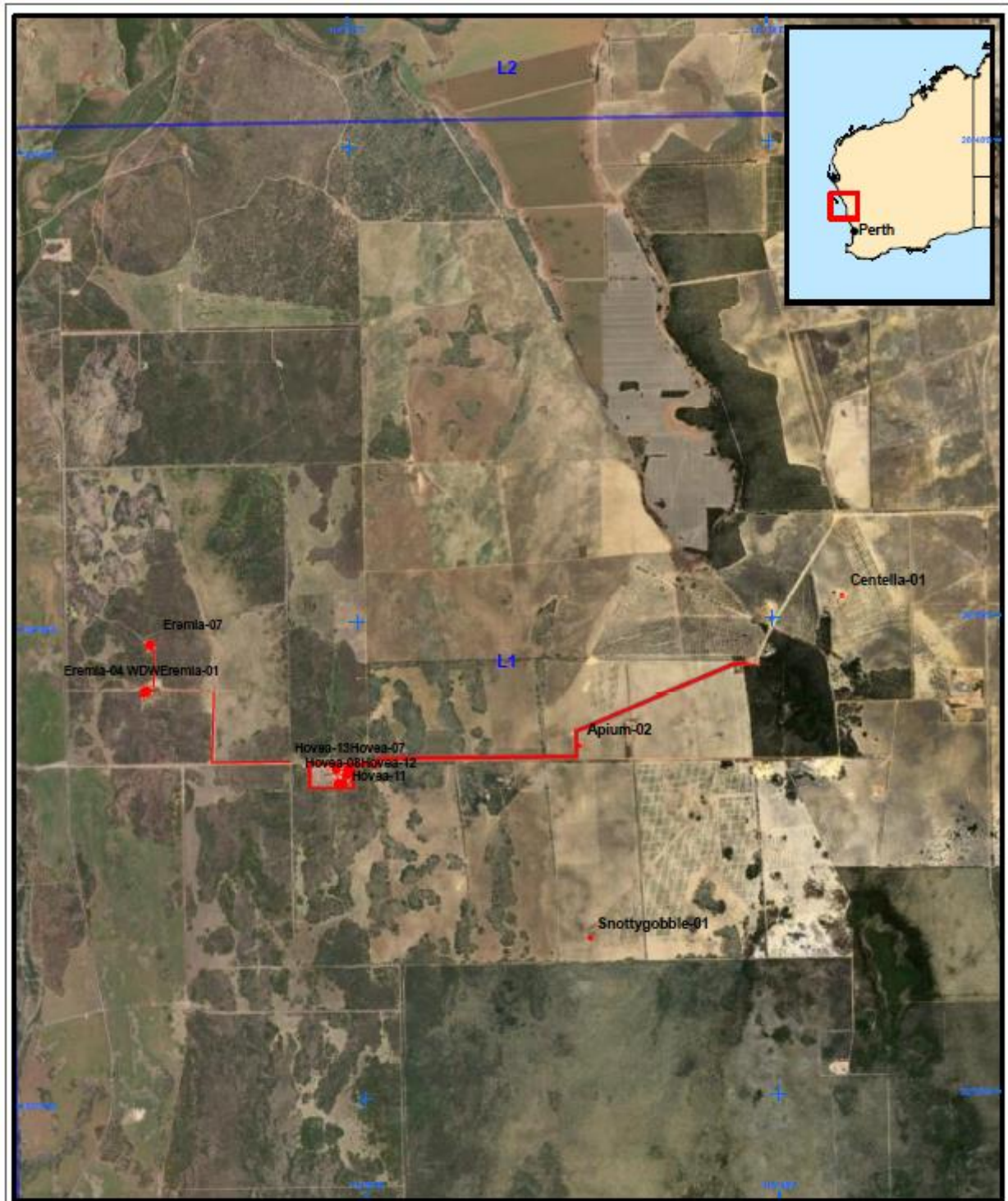
ATTACHMENT 1.02 WAITSIA GAS PROJECT FIELD LAYOUT



ATTACHMENT 1.03 DONGARA GAS FIELD LAYOUT



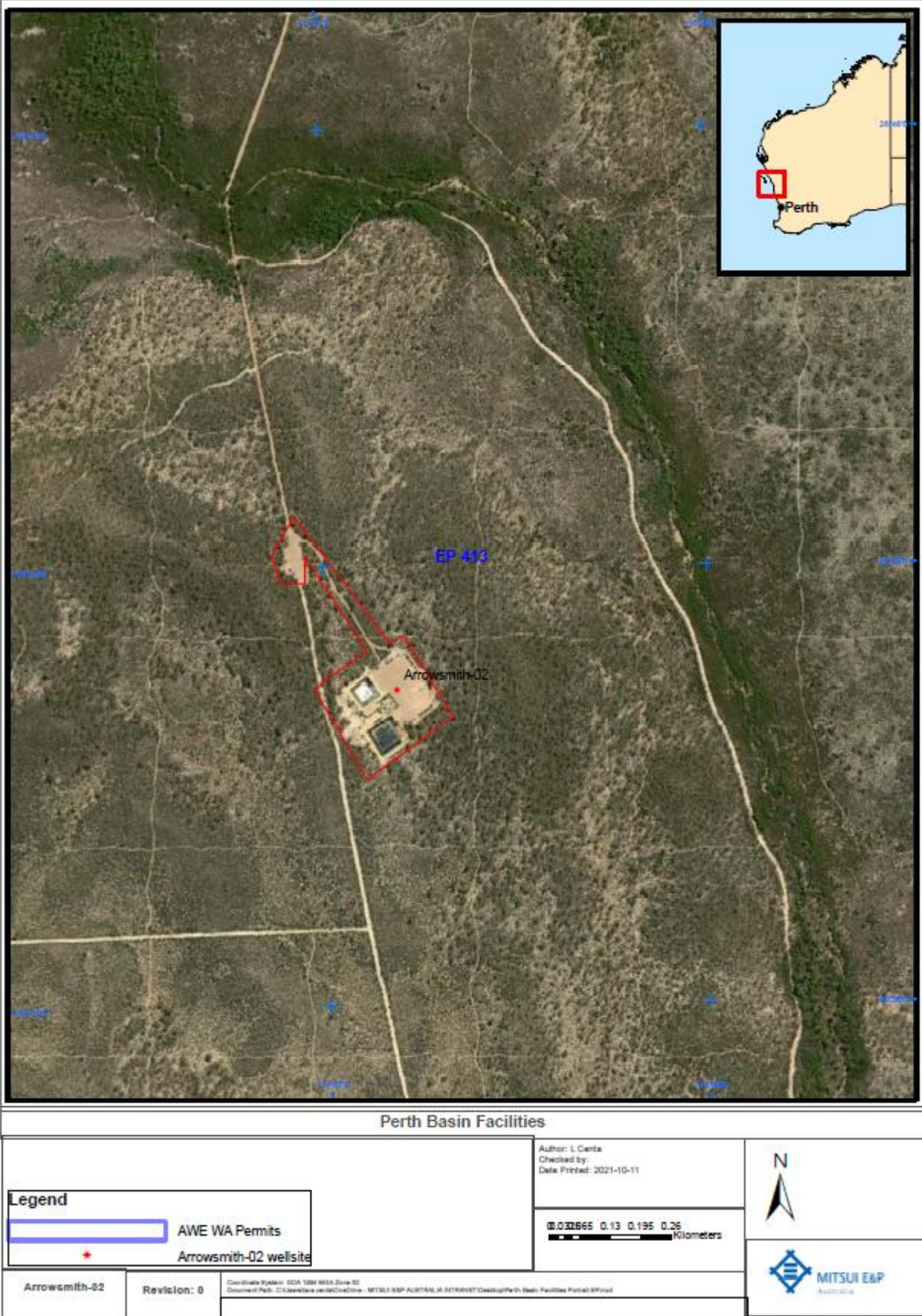
ATTACHMENT 1.04 HOVEA & EREMIA FIELD LAYOUT



Perth Basin Facilities			
<b>Legend</b> <div style="margin-bottom: 5px;"><span style="border: 1px solid blue; display: inline-block; width: 20px; height: 10px;"></span> AWE WA Permits</div> <div style="margin-bottom: 5px;"><span style="color: red; font-size: 1.2em;">★</span> Hovea &amp; Eremia Well sites</div> <div style="margin-bottom: 5px;"><span style="border-bottom: 1px solid red; display: inline-block; width: 20px;"></span> Eremia Flowlines</div> <div style="margin-bottom: 5px;"><span style="border: 2px solid red; display: inline-block; width: 20px; height: 10px;"></span> Hovea Production Facility</div>	Author: L.Centa Checked by: Date Printed: 2021-03-22	N 	
Hovea & Eremia Oil & Gas Field	Revision: 0	Coordinate System: GDA 1984 MGA Zone 51 Document Path: C:\Users\lcenta\OneDrive\Perth Basin Facilities Project\EP\	



ATTACHMENT 1.06 ARROWSMITH-02 LAYOUT



**ATTACHMENT 2  
DPF WDW CHEMICAL DISCLOSURE**

Products Potentially Discharged “Down Hole” for DPF WDW

Table 2.1 System Details

Operator	AWE Perth Pty Ltd (trading as MEPAU)
Project / Well	DPF Water Disposal Well (WDW)
System	DPF Waste Water System
Total Volume	1,000 kL
Note	Concentrations of product in the Produced Water are absolute maximums based on the volume of the individual chemical injected into the gas stream

Table 2.2 Product List for DPF WDW

Product Name	Supplier	Purpose	Toxicity, Eco toxicity & Biodegradability Data	% Product in System Fluid
Wastewater	MEPAU	Product separated from gas / stormwater / wastewater		92.95%
Methanol (97%)	Halliburton	Hydrate Inhibitor	<p><b>Acute Toxicity</b></p> <ul style="list-style-type: none"> <li>ErC50 (96h) 22000 mg/L (<i>Pseudokirchnerella subcapitata</i>) (algae)</li> <li>LC50 28200 mg/L (<i>Pimephales promelas</i>)</li> <li>LC50 (96h) 12700 – 15400 mg/L (<i>Lepomis macrochirus</i>) (fish)</li> <li>IC50 (3h) &gt; 1000 mg/L (activated sludge)</li> <li>EC50 (96h) 18260 mg/L (<i>Daphnia magna</i>)</li> <li>NOEC (21d) 122 mg/L (<i>Daphnia magna</i>, Reproduction) (chronic toxicity fish)</li> </ul> <p><b>Persistence and Degradability</b></p> <ul style="list-style-type: none"> <li>(95-97% @ 20d)</li> </ul> <p><b>Bioaccumulative potential</b></p> <ul style="list-style-type: none"> <li>Log Pow -0.77</li> <li>BCF = 1.0 – 4.5 (<i>Cyprinus carpio</i>)</li> <li>BCF &lt; 10 (<i>Leuciscus idus melanotus</i>)</li> </ul>	6.2%
CORR 10331A	EcoLab	Corrosion Inhibitor	<p><b>Acute Toxicity</b></p> <p><i>Component 1 (60-100%)</i></p> <ul style="list-style-type: none"> <li>Non-hazardous according to Safe Work Australia criteria, non-dangerous goods according to ADG.</li> </ul> <p><i>N-Benzyl-Alkylpyridinium Chloride (5-10%)</i></p> <ul style="list-style-type: none"> <li>EC50: 0.16 mg/l Exposure time: 72 h</li> </ul> <p><i>Benzyl(Coconut Oil Alkyl)Dimethylammonium Chloride (1-5%)</i></p> <p>No data available</p> <p><i>Diethylenetriamine and tall-oil (fatty) acid (1-5%)</i></p> <ul style="list-style-type: none"> <li>LC50: 0.3 mg/l Exposure time: 48 h (daphnia)</li> </ul> <p><i>Ethoxylated Mono-Tallow Alkyl-Amine (1-5%)</i></p> <p>No data available</p> <p><i>Methanol (1-5%)</i></p> <ul style="list-style-type: none"> <li>LC50: 15,400 mg/l Exposure time: 96 h (fish)</li> <li>NOEC: 7,900 mg/l Exposure time: 8.3 d</li> <li>EC50: &gt; 10,000 mg/l Exposure time: 48 h (daphnia)</li> <li>EC50: 22,000 mg/l Exposure time: 72 h (algae)</li> </ul>	0.1%

PERTH BASIN FACILITIES ENVIRONMENT PLAN SUMMARY

Product Name	Supplier	Purpose	Toxicity, Eco toxicity & Biodegradability Data	% Product in System Fluid
			<ul style="list-style-type: none"> <li>Toxicity to bacteria &lt;1,000 mg/l</li> <li>2-Mercaptoethano (1-5%)</li> <li>Toxicity to fish: no data available</li> <li>EC50: 0.89 mg/l Exposure time: 48 h (daphnia)</li> <li>EC50 <i>Scenedesmus subspicatus</i> (cell multiplic. inhib. test) 12 mg/L/72 hr</li> <li>Toxicity to microorganisms: no data available</li> </ul> <p><u>Biodegradation/bioaccumulation</u></p> <ul style="list-style-type: none"> <li>No data available</li> </ul>	
NALCO EC9356A	Nalco Champion	H <sub>2</sub> S Scavenger	<p><u>Acute Toxicity</u></p> <p>Hexahydro-1,3,5-Trimethyl-S-Triazine:</p> <ul style="list-style-type: none"> <li>LC50: &gt;1.908 mg/L exposure time 96 hr (fish)</li> <li>LC50: 20.352 mg/L exposure time 48 hr (daphnia and other aquatic invertebrates)</li> <li>EC50: 1.145 mg/L exposure time 72 hr (algae)</li> </ul> <p><u>Biodegradation/bioaccumulation</u></p> <p>Hexahydro-1,3,5-Trimethyl-S-Triazine:</p> <ul style="list-style-type: none"> <li>Log Pow: 1.4</li> <li>Biodegradation (14d): 73% (OECD 306)</li> </ul>	0.05%
HSCV27157B	EcoLab	H <sub>2</sub> S Scavenger	<p><u>Acute Toxicity</u></p> <p>Hexahydro-1,3,5-Trimethyl-S-Triazine</p> <ul style="list-style-type: none"> <li>LC50: &gt; 1.908 mg/l exposure time: 96 h (fish)</li> <li>LC50: 20.352 mg/l exposure time: 48 h (daphnia and other aquatic invertebrates)</li> <li>EC50: 1.145 mg/l (algae)</li> </ul> <p><u>Biodegradation/bioaccumulation</u></p> <p>No data available</p>	0.2%
EC6733A	Nalco Champion	Biocide	<p><u>Acute Toxicity</u></p> <p>Tetrakis(hydroxymethyl)phosphonium sulphate (supplier data, 75% active in water) (60-90%):</p> <ul style="list-style-type: none"> <li>LC50: 72 mg/L exposure time 96 hr (fish)</li> <li>LC50: 0.6 mg/L exposure time 48 hr (daphnia and other aquatic invertebrates)</li> <li>EC50: 0.16 mg/L exposure time 72 hr (algae)</li> </ul> <p>Benzyl-(C12-C16 Linear Alkyl)-Dimethyl-Ammonium Chloride (5-10%):</p> <ul style="list-style-type: none"> <li>LC50: 1.7 mg/L exposure time 96 hr (fish)</li> <li>LC50: 0.4 mg/L exposure time 48 hr (daphnia and other aquatic invertebrates)</li> <li>EC50: 0.26 mg/L exposure time 72 hr (algae)</li> </ul> <p>Formaldehyde (0.1-1%):</p> <ul style="list-style-type: none"> <li>LC50: 611 mg/L exposure time 96 hr (fish)</li> <li>LC50: 38 mg/L exposure time 48 hr (daphnia and other aquatic invertebrates)</li> <li>EC50: 4.1 mg/L exposure time 72 hr (algae)</li> </ul> <p><u>Biodegradation/bioaccumulation</u></p> <p>Tetrakis(hydroxymethyl)phosphonium sulphate (supplier data, 75% in water) (60-90%):</p> <ul style="list-style-type: none"> <li>Log Pow: 0</li> <li>Biodegradation (28d): 60% (OECD 306)</li> </ul> <p>Benzyl-(C12-C16 Linear Alkyl)-Dimethyl-Ammonium Chloride (5-10%):</p> <ul style="list-style-type: none"> <li>Log Pow: 0.1-1.9</li> <li>Biodegradation (28d): 34% (OECD 306)</li> </ul> <p>Formaldehyde (0.1-1%):</p>	0.2%

PERTH BASIN FACILITIES ENVIRONMENT PLAN SUMMARY

Product Name	Supplier	Purpose	Toxicity, Eco toxicity & Biodegradability Data	% Product in System Fluid
			<ul style="list-style-type: none"> <li>Log Pow: &lt;0</li> <li>Biodegradation (28d): 83% (OECD 306)</li> </ul>	
Seaguard AFFF 3%	Seaguard Chemicals and Firefighting	Fire extinguishing agent (in case of discharge from bund following an incident / exercise)	<p><u>Acute Toxicity</u></p> <ul style="list-style-type: none"> <li>No data available</li> </ul> <p><u>Biodegradation/bioaccumulation</u></p> <ul style="list-style-type: none"> <li>No data available</li> </ul>	0.08%
Flamestop Fluorine Free & Acohol Resistant Concentrate	FlameStop	Fire extinguishing agent (in case of discharge from bund following an incident / exercise)	<p><u>Aquatic Toxicity</u></p> <p>Acute (short term) fish toxicity - Effective dose LC50 ~240 mg/L (96h exposure time) species <i>Leuciscus idus</i> (golden orfe) method OECD 203</p> <p>Actute (short term) toxicity to crustacea - Effective dose EC50 ~210 mg/L (48h exposure time) species <i>Daphnia magna</i> (Big water flea) method OECD 202</p> <p>Acute (short term) toxicity to aquatic algae and cyanobacteria - Effective dose EC50 ~210 mg/L (72h exposure time) species <i>Scenedesmus subspicatus</i> method OECD 201</p> <p>Effects in sewage plants - respiratory inhibition of municipal activated sludge method</p> <p>500 mg/L – concentration: 100% dilution: &gt;2000</p> <p>166,000 mg/L – concentration: 3% dilution &gt;60</p> <p>Technically correct releases of minimal concentrations to adapted biological sewage plants, will not disturb the biodegradability of activated sludge. The product may lead to foaming in sewage plants.</p> <p><u>Biodegradation</u></p> <p>Readily biodegradable (according to OECD criteria). Degradation rate ~99% (time 28d). Analytical method BOD (% of COD) OECD 302B/ ISO 9888/ EEC 92/69/V, C.9 (Type Aerobic biological treatment)</p> <p><u>Chemical Oxygen Demand (COD)</u></p> <p>~488,000 mg*O2/L Concentration: 100% Method: DIN EN 38409-H41-1</p> <p>~14,640 mg*O2/L Concentration: 3% Method: DIN EN 38409-H41-1</p> <p>~170,000 mg*O2/L Concentration: 100% Method: DIN EN 1899-1 Test durarion: 5d</p> <p>~5,100 mg*O2/L Concentration: 3% Method: DIN EN 1899-1 Test durarion: 5d</p> <p><u>Bioaccumulative Potential</u></p> <p>1,2-Ethandiol: No indication of bioaccumulation potential</p> <p>2-(2-Butoxyethoxy)ethanol: No indication of bioaccumulation potential</p> <p>Triethanolammonium-laurylsulfate: No indication of bioaccumulation potential</p> <p>Alkylamidobetaine: No indication of bioaccumulation potential</p> <p><u>Mobility in soil</u></p> <p>If product enters soil, it will be mobile and may contaminate groundwater</p> <p><u>Results of PBT and VPVB Assessment</u></p> <p>1,2-Ethandiol: This substance does not meet the PBT/vPvB criteria of REACH, annex XIII.</p> <p>2-(2-Butoxyethoxy)ethanol: This substance does not meet the PBT/vPvB criteria of REACH, annex XIII.</p> <p>Triethanolammonium-laurylsulfate: This substance does not meet the PBT/vPvB criteria of REACH, annex XIII.</p> <p>Alkylamidobetaine: This substance does not meet the PBT/vPvB criteria of REACH, annex XIII.</p>	0.08%

**Table 2.3 “Down Hole” Products Ingredients for DPF WDW**

Chemical Name	CAS number	Mass fraction (%)
Wastewater		92.95
Methanol	67-56-1	6.2015
Water	7732-18-5	0.27405
N-Benzyl-Alkylpyridinium Chloride	68909-18-2	0.0125
Benzyl(Coconut Oil Alkyl)Dimethylammonium Chloride	61789-71-7	0.0044
Fatty amino compound	61790-69-0	0.0044
Ethoxylated Mono-Tallow Alkyl-Amine	61791-26-2	0.0044
2-Mercaptoethanol	60-24-2	0.0044
Hexahydro-1,3,5-Trimethyl-S-Triazine	108-74-7	0.025
Monomethylamine	74-89-5	0.0001
Tetrakis(hydroxymethyl) phosphonium sulfate	55566-30-8	0.05
Benzyl-(C12-C16 Linear Alkyl)-Dimethyl-Ammonium Chloride	68424-85-1	0.0014
Formaldehyde	50-00-0	0.0014
Cocamidopropyl Betaine	61789-04-0	0.002
Fluorocarbon surfactant		0.004
Fatty acids, coco, compounds with diethanolamine	61790-63-4	0.004
Sodium Laureth-5 Sulfate	9004-82-4	0.004
Dipropylene glycol, monomethyl	34590-94-8	0.008
1,2-Ethandiol	107-21-1	0.012
2-(2-Butoxyethoxy)ethanol	112-34-5	0.008
Triethanolammonium-laurylsulfate	85665-45-8	0.008
Alkylamidobetaine	147170-44-3	0.004
	<b>TOTAL</b>	100% (excluding contingency volumes)